



**Regular Board Meeting of The Placer County Resource Conservation
District Board of Directors**

**September 23, 2025
11641 Blocker Drive
Auburn, CA 95603
Second floor conference room
4:00pm**

- 1) CALL TO ORDER
- 2) MEMBERS & GUESTS PRESENT
- 3) APPROVAL OF AGENDA
- 4) PUBLIC COMMENT
This time is provided so that people may speak to the board on any item not on this agenda. Public comments are limited to 5 minutes. The board cannot act on items not included on this agenda.
- 5) APPROVAL OF PREVIOUS MINUTES
 - Regular Board Meeting – August 26, 2025

The board will review and may act to accept/deny the previous meeting minutes listed
- 6) FINANCIAL REPORTS
 - August 2025 Financial Report

The board will be given an update by the Administration and Finance Director on recent financial management activities and will review and may act to accept/deny the Placer County Resource Conservation District (Placer RCD, District) August 2025 financials

7) AGENCY REPORT

CLOSED SESSION

- a. GOVERNMENT CODE SECTION 54957(b)(1)
PERSONNEL DISCUSSION
Discussion of performance of Prescribed Fire Program Manager

- b. GOVERNMENT CODE SECTIONS 54956.8 and 54954.5
CONFERENCE WITH REAL PROPERTY NEGOTIATORS
Property: 11641 Blocker Drive, Auburn, CA, 95603
Agency negotiator: Sarah Jones, Donna Thomassen- Placer
County Resource Conservation District
Negotiating parties: Eugene Burger Management
Under negotiation: Lease terms

8) BUSINESS:

New Business:

- a. Prescribed Fire Program Director
The board will review and may act to approve the Prescribed Fire Program Director position and job description
- b. Draft 2025 Placer Resource Conservation District Organizational Chart
The board will review and may act to approve the Draft 2025 Placer Resource Conservation District Organizational Chart
- c. FY26 Placer Resource Conservation District Fee Schedule
The board will review and may act to adopt the FY26 Placer RCD Fee Schedule
- d. Total Compensation Study Update
The board will receive an update on the Total Compensation Study
- e. Employee Acknowledgements
The board will recognize employee anniversaries
Chris Paulus, 2 years
Jerry Reioux, 5 years
Mark White, 5 years

Brian Pimentel to receive the Friend of Agriculture Award from Auburn Chamber of Commerce

9) BOARD DIRECTOR REPORTS/COMMENTS

10) FUTURE AGENDA ITEMS

11) ADJOURNMENT

**PLACER COUNTY RESOURCE CONSERVATION DISTRICT
MINUTES OF THE BOARD OF DIRECTORS
REGULAR MEETING
August 26, 2025**

CALL TO ORDER

The regular meeting of the Placer County Resource Conservation District (District /RCD) Board was called to order by RCD Board Chair Claudia Smith at 4:00 pm in the second-floor conference room at 11641 Blocker Drive in Auburn, CA.

MEMBERS AND OTHERS PRESENT

Directors Present: Claudia Smith
Stephen (Steve) Jones
Kristin Lantz
Jonathan (Jon) Jue
Jim Holmes
Justin Miller

Directors Absent: Patricia (Patti) Beard

Others Present: Sarah Jones, RCD Executive Director
Donna Thomassen, RCD Employee
Kate Espinola, RCD Employee
Cordi Craig, RCD Employee
Brian Pimentel, RCD Employee
Joe Kausek, Associate Director
Mark Starr, Associate Director
Eric Brumfield, District Counsel
Chris Robbins, NRCS District Conservationist

APPROVAL OF AGENDA

Justin Miller moved to approve the agenda as presented. Kristin Lantz seconded, and the motion passed unanimously.

PUBLIC COMMENT

Caludia Smith reviewed the public comment process.

APPROVAL OF MEETING MINUTES

Justin Miller moved to approve the amended meeting minutes from the regular meeting held on July 22, 2025. Steve Jones seconded, and the motion passed with 5 ayes and 2 absent.

Kristin Lantz moved to approve the amended meeting minutes from the Finance Committee meeting held on August 19, 2025. Jon Jue seconded, and the motion passed with 2 aye and 1 absent.

Kristin Lantz moved to approve the meeting minutes from the Executive Committee meeting held on August 19, 2025. Steve Jones seconded, and the motion unanimously passed.

FINANCIAL REPORTS

Donna Thomassen presented the unaudited July 2025 financial reports. It was disclosed that these reports are subject to change due to any adjusting journal entries during the end of fiscal year closing. Jon Jue moved to accept the financial reports as presented. Jim Holmes seconded, and the motion passed unanimously.

AGENCY REPORT

Chris Robbins, NRCS Auburn Office District Conservationist reported their fiscal year will end at the end of September. Engineers are now working for the State office, which may cause a backlog.

CLOSED SESSION

The board went into closed session at 4:19 pm.

Government Code §54956.9 - CONFERENCE WITH LEGAL COUNSEL

1. Existing Litigation (Government Code §54956.9(d)(1)):

(a) Truckee Fire Protection District v. County of Placer, et al.

Sacramento County Superior Court Case No. 25WM000083

The board concluded closed session at 4:39 pm.

The Board met in closed session to consider one item of existing litigation. Under conference with legal counsel existing litigation - Truckee Fire Protection District v. County of Placer, et al., the Board heard a report and provided direction on a 6-0 vote. This concludes the report out of closed session.

BUSINESS

New Business:

a) Total Compensation Study

Public comments were given as follows:

Brian Pimentel expressed concerns about the Total Compensation Study recommendations.

Cordi Craig expressed concerns about maintaining an equitable environment.

Kristin Lantz moved to accept receipt of the Total Compensation Study report. Jon Jue seconded, and the motion passed unanimously.

b) Employer Provided Health Insurance Cap Increase

Kristin Lantz moved to increase the health insurance cap to \$1,500.00 (\$300.00 increase) per employee, per month, starting the first payroll in January 2026. Justin Miller seconded, and the motion passed unanimously.

c) Placer County Resource Conservation District Draft Fiscal Year (FY)26 Annual Budget

Donna Thomassen presented the Unaudited FY25 Budget vs. Actual, Project Overview, Proposed Revenue Budget, and Proposed Expenditure. Jim Holmes moved to adopt the FY26 Annual Budget (Balanced) with the inclusion of the increased health insurance cap. Jon Jue seconded, and the motion passed unanimously.

d) Placer County Resource Conservation District 2025 Total Compensation Study (Total Compensation Study) Recommendations

Board directed staff to compile employee benefit information and details on current employee steps. Item was tabled.

e) Resolution 26-02 Resolution of the Board of Directors of the Placer County Resource Conservation District, State of California for funding from the Wildfire Prevention Program as provided through the Climate Investment and Proposition 4

Jim Holmes moved to adopt Resolution 26-02 for the Board of Directors of the Placer County Resource Conservation District, State of California for funding from the Wildfire Prevention Program as provided through the Climate Investment and Proposition 4. Steve Jones seconded, and the motion passed unanimously.

f) California Association of Resource Conservation Districts (CARCD) FY26 Dues

This item was revisited based on information received from CARCD regarding the requirement that our membership be continued for the RCD to receive funding for current and future programs. Jim Holmes moved to approve payment for the FY26 CARCD membership dues. Kristin Lantz seconded, and the motion passed with 5 ayes and 1 abstained.

g) Employee Acknowledgements

The board recognized Ellen Murphy, Cordi Craig and Brian Pimentel for their District anniversaries. Discussion only.

BOARD REPORTS/COMMENTS

None given.

FUTURE AGENDA ITEMS

Future agenda items – Total Compensation Study

ADJOURNMENT

The regular meeting was adjourned at 6:17 pm. Kristin Lantz moved to adjourn the regular meeting. Jon Jue seconded, and the motion passed unanimously. The next regular meeting is scheduled for September 23, 2025, from 4:00 pm to 6:00 pm in the upstairs conference room at 11641 Blocker Drive, Auburn.

Placer County RCD

Profit and Loss

July - August, 2025

	TOTAL
Income	
CONTRIBUTED SUPPORT	
Chipping Service Contributions	11,860.00
Total CONTRIBUTED SUPPORT	11,860.00
EARNED REVENUES	
Interest Income - Operations	16,043.09
Property Tax Revenues	249.18
Special District - Income	727.50
Surplus Equipment Revenue	40,000.00
Total EARNED REVENUES	57,019.77
Total Income	\$68,879.77
GROSS PROFIT	\$68,879.77
Expenses	
EXPENSES	
Bank Charges & C/C Fees	336.00
Contractual Services	
Grants/Agreements/Projects	147,491.33
Operations	4,382.39
Total Contractual Services	151,873.72
Copier Lease	128.70
Insurance - Health Active	64,857.35
Insurance - Workmen's Compensation	30,131.36
Insurance Liability	43,650.89
Insurance-Health Retirees	5,681.20
Materials & Supplies	
Field Supplies inc. Forestry Truck Exp	288.77
Fuel	3,059.60
Grants/Agreements/Programs	1,939.20
Office Supplies	1,332.60
Uniforms/Safety	28.44
Total Materials & Supplies	6,648.61
Meals and Entertainment	69.27
Payroll Expenses	
Leave Wages; Holiday/Vacation/Sick/Comp	31,235.68
Payroll Tax Expense	10,833.98
PERS	13,040.02
Wages	115,304.04
Total Payroll Expenses	170,413.72
Rent Expense	20,724.30
Repair & Maintenance	4,237.18
Subscriptions	1,408.80

Placer County RCD

Profit and Loss

July - August, 2025

	TOTAL
Telephone (Cell) Stipends	462.50
Travel & Mileage	940.65
Unfunded Retirement Plan Expenses	36,618.00
Utilities	
PG&E	607.43
Phone/Internet	1,030.11
Total Utilities	1,637.54
Total EXPENSES	539,819.79
Total Expenses	\$539,819.79
NET OPERATING INCOME	\$ -470,940.02
Other Expenses	
Other Miscellaneous Expense	-204.55
Total Other Expenses	\$ -204.55
NET OTHER INCOME	\$204.55
NET INCOME	\$ -470,735.47

Placer County RCD

Balance Sheet
As of August 31, 2025

	TOTAL
ASSETS	
Current Assets	
Bank Accounts	
Placer County Checking	2,064,012.08
Total Bank Accounts	\$2,064,012.08
Accounts Receivable	
Accounts Receivable	447,778.03
Accounts Receivable - Reimbursements	1,166.00
Accounts Receivable - Unbilled	1,132.51
Total Accounts Receivable	\$450,076.54
Other Current Assets	
Def Outflows - OPEB	35,561.00
Def Outflows - Pension	299,355.00
Prepaid Expenses	1,020.00
Security Deposit	6,476.80
Undeposited Funds	48,874.14
Total Other Current Assets	\$391,286.94
Total Current Assets	\$2,905,375.56
Fixed Assets	
Leased Assets	141,991.00
Leased Asset - Accumulated Depreciation	-72,947.00
Leased Assets - Original	172,557.00
Total Leased Assets	241,601.00
Machinery and Equipment	
Machinery & Equipment - Depreciation	-283,377.00
Machinery & Equipment - Original Cost	777,758.06
Total Machinery and Equipment	494,381.06
Total Fixed Assets	\$735,982.06
TOTAL ASSETS	\$3,641,357.62

Placer County RCD

Balance Sheet As of August 31, 2025

	TOTAL
LIABILITIES AND EQUITY	
Liabilities	
Current Liabilities	
Accounts Payable	
Accounts Payable	162,289.40
Total Accounts Payable	\$162,289.40
Other Current Liabilities	
Accrued Leaves Payable	67,373.29
Def Inflows - Pension	26,279.00
Lease Payable	203,035.00
Lease Payable - Current	54,308.00
Sales Tax Payable	51.06
Unearned Revenues	0.00
Due to Placer Sierra Fire Safe Council	33,273.08
Unearned Revenue - CALFire Mosquito 3 Rec & Ref	505,408.54
Unearned Revenue - Forestry Mentorship Program	4,761.62
Unearned Revenue - One Tree Planted (MOSQ 3)	10,268.75
Unearned Revenue - PBPL Private Donations	507.78
Unearned Revenue - Rose Foundation	18,074.03
Unearned Revenue - Urban & Community Support	650.40
Unearned Revenue - USF&W Riparian	3,243.16
Unearned Revenue - Wild Turkey Federation	5,000.00
Total Unearned Revenues	581,187.36
Total Other Current Liabilities	\$932,233.71
Total Current Liabilities	\$1,094,523.11
Long-Term Liabilities	
Net OPEB Liability	151,570.00
Net Pension Liability	419,800.00
Total Long-Term Liabilities	\$571,370.00
Total Liabilities	\$1,665,893.11
Equity	
Assigned Funds	902,902.36
Net Assets	1,064,578.62
Net Investment in Capital Assets	478,639.00
Prior Period Adjustment	80.00
Net Income	-470,735.47
Total Equity	\$1,975,464.51
TOTAL LIABILITIES AND EQUITY	\$3,641,357.62

Placer County RCD

Transaction Report

August 2025

DATE	TRANSACTION TYPE	NUM	NAME	MEMO/DESCRIPTION	ACCOUNT	SPLIT	AMOUNT	BALANCE
Placer County Checking								
	Beginning Balance							2,476,596.23
08/01/2025	Journal Entry	Stale Cks Aug '25		Liana Vitousek, 1/14/25 payment not cashed	Placer County Checking	-Split-	50.00	2,476,646.23
08/01/2025	Bill Payment (Check)	11368172	Georgetown Divide RCD		Placer County Checking	Accounts Payable	-42,762.00	2,433,884.23
08/01/2025	Bill Payment (Check)	11368174	Pamunkey Contracting Company, LLC		Placer County Checking	Accounts Payable	-34,530.90	2,399,353.33
08/01/2025	Bill Payment (Check)	11368171	Far Western Anthropological Research Group, Inc		Placer County Checking	Accounts Payable	-20,650.03	2,378,703.30
08/01/2025	Bill Payment (Check)	11368170	Amador County RCD		Placer County Checking	Accounts Payable	-9,721.24	2,368,982.06
08/01/2025	Bill Payment (Check)	11368176	TUV SUD America, Inc.		Placer County Checking	Accounts Payable	-9,680.20	2,359,301.86
08/01/2025	Bill Payment (Check)	11368173	HR to GO		Placer County Checking	Accounts Payable	-1,500.00	2,357,801.86
08/01/2025	Bill Payment (Check)	11368175	TeamLogic IT		Placer County Checking	Accounts Payable	-1,247.73	2,356,554.13
08/01/2025	Bill Payment (Check)	11368177	White, Mark		Placer County Checking	Accounts Payable	-950.00	2,355,604.13
08/01/2025	Deposit			System-recorded deposit for QuickBooks Payments	Placer County Checking	-Split-	320.00	2,355,924.13
08/01/2025	Expense		QuickBooks Payments	System-recorded fee for QuickBooks Payments. Fee-name: DiscountRateFee, fee-type: Daily.	Placer County Checking	EXPENSES:Bank Charges & C/C Fees	-8.96	2,355,915.17
08/03/2025	Deposit		Erik Berns	System-recorded deposit for QuickBooks Payments	Placer County Checking	Undeposited Funds	160.00	2,356,075.17
08/03/2025	Deposit			System-recorded deposit for QuickBooks Payments	Placer County Checking	-Split-	160.00	2,356,235.17
08/03/2025	Expense		QuickBooks Payments	System-recorded fee for QuickBooks Payments. Fee-name: DiscountRateFee, fee-type: Daily.	Placer County Checking	EXPENSES:Bank Charges & C/C Fees	-4.48	2,356,230.69
08/03/2025	Expense		QuickBooks Payments	System-recorded fee for QuickBooks Payments. Fee-name: DiscountRateFee, fee-type: Daily.	Placer County Checking	EXPENSES:Bank Charges & C/C Fees	-4.48	2,356,226.21
08/04/2025	Bill Payment (Check)	11368497	Balbir Sohal		Placer County Checking	Accounts Payable	-42,921.32	2,313,304.89
08/04/2025	Bill Payment (Check)	11368498	West Wise Farm, Inc.		Placer County Checking	Accounts Payable	-33,217.48	2,280,087.41
08/04/2025	Bill Payment (Check)	11368496	Michael Engler		Placer County Checking	Accounts Payable	-21,055.07	2,259,032.34
08/04/2025	Bill Payment (Check)	11368495	Watch Dog Security		Placer County Checking	Accounts Payable	-3,792.51	2,255,239.83
08/05/2025	Deposit			System-recorded deposit for QuickBooks Payments	Placer County Checking	-Split-	160.00	2,255,399.83
08/05/2025	Expense		QuickBooks Payments	System-recorded fee for QuickBooks Payments. Fee-name: DiscountRateFee, fee-type: Daily.	Placer County Checking	EXPENSES:Bank Charges & C/C Fees	-4.48	2,255,395.35
08/06/2025	Bill Payment (Check)	11368801	Johl Family Orchard, LLC		Placer County Checking	Accounts Payable	-33,304.82	2,222,090.53
08/06/2025	Deposit		Cheryl Paduano	System-recorded deposit for QuickBooks Payments	Placer County	Undeposited Funds	80.00	2,222,170.53

Placer County RCD

Transaction Report

August 2025

DATE	TRANSACTION TYPE	NUM	NAME	MEMO/DESCRIPTION	ACCOUNT	SPLIT	AMOUNT	BALANCE
08/06/2025	Expense		QuickBooks Payments	System-recorded fee for QuickBooks Payments. Fee-name: DiscountRateFee, fee-type: Daily.	Checking Placer County Checking	EXPENSES:Bank Charges & C/C Fees	-0.80	2,222,169.73
08/07/2025	Deposit			System-recorded deposit for QuickBooks Payments	Placer County Checking	-Split-	160.00	2,222,329.73
08/07/2025	Expense		QuickBooks Payments	System-recorded fee for QuickBooks Payments. Fee-name: DiscountRateFee, fee-type: Daily.	Placer County Checking	EXPENSES:Bank Charges & C/C Fees	-4.48	2,222,325.25
08/08/2025	Journal Entry	Pay Period 03		RCD Payroll PP#03 period ending, July 25, 2025	Placer County Checking	-Split-	-58,729.17	2,163,596.08
08/08/2025	Deposit			System-recorded deposit for QuickBooks Payments	Placer County Checking	-Split-	160.00	2,163,756.08
08/08/2025	Expense		QuickBooks Payments	System-recorded fee for QuickBooks Payments. Fee-name: DiscountRateFee, fee-type: Daily.	Placer County Checking	EXPENSES:Bank Charges & C/C Fees	-4.48	2,163,751.60
08/11/2025	Check	11369492	Cal Card US Bank		Placer County Checking	Cal Card Credit Card	-5,514.64	2,158,236.96
08/11/2025	Payment		One Tree Planted, Inc.		Placer County Checking	Accounts Receivable	11,900.00	2,170,136.96
08/11/2025	Payment		US Forest Service		Placer County Checking	Accounts Receivable	68,454.08	2,238,591.04
08/11/2025	Bill Payment (Check)	11369480	Epilogue Holdings, LLC		Placer County Checking	Accounts Payable	-64,921.57	2,173,669.47
08/11/2025	Bill Payment (Check)	11369481	Fowler Nurseries		Placer County Checking	Accounts Payable	-35,798.41	2,137,871.06
08/11/2025	Bill Payment (Check)	11369489	Sierra Pacific Industries, Inc.		Placer County Checking	Accounts Payable	-26,329.15	2,111,541.91
08/11/2025	Bill Payment (Check)	11369483	Gold Rush Chevrolet		Placer County Checking	Accounts Payable	-3,159.77	2,108,382.14
08/11/2025	Bill Payment (Check)	11369486	Pilz, Lisa		Placer County Checking	Accounts Payable	-1,076.64	2,107,305.50
08/11/2025	Bill Payment (Check)	11369478	Cascade Fire Equipment		Placer County Checking	Accounts Payable	-1,073.85	2,106,231.65
08/11/2025	Bill Payment (Check)	11369488	TeamLogic IT		Placer County Checking	Accounts Payable	-1,020.00	2,105,211.65
08/11/2025	Bill Payment (Check)	11369485	Maloney, Kathryn L.		Placer County Checking	Accounts Payable	-950.00	2,104,261.65
08/11/2025	Bill Payment (Check)	11369484	Gresham, Richard		Placer County Checking	Accounts Payable	-940.60	2,103,321.05
08/11/2025	Bill Payment (Check)	11369477	Lewis Campbell		Placer County Checking	Accounts Payable	-507.38	2,102,813.67
08/11/2025	Bill Payment (Check)	11369536	Devin Filyau		Placer County Checking	Accounts Payable	-281.29	2,102,532.38
08/11/2025	Bill Payment (Check)	11369482	Andrew Fritz		Placer County Checking	Accounts Payable	-261.36	2,102,271.02
08/11/2025	Bill Payment (Check)	11369479	Cordi Craig		Placer County Checking	Accounts Payable	-222.76	2,102,048.26
08/11/2025	Bill Payment (Check)	11369476	Bryce Consulting		Placer County Checking	Accounts Payable	-190.00	2,101,858.26
08/11/2025	Bill Payment	11369490	Scott Stephenson		Placer County	Accounts Payable	-188.26	2,101,670.00

Placer County RCD

Transaction Report

August 2025

DATE	TRANSACTION TYPE	NUM	NAME	MEMO/DESCRIPTION	ACCOUNT	SPLIT	AMOUNT	BALANCE
08/11/2025	(Check) Bill Payment	11369487	Brian Pimentel		Checking Placer County	Accounts Payable	-100.40	2,101,569.60
08/11/2025	(Check) Bill Payment	11369475	Auburn Saw Inc.		Checking Placer County	Accounts Payable	-91.12	2,101,478.48
08/11/2025	(Check) Bill Payment	11369493	Liana Vitousek		Checking Placer County	Accounts Payable	-50.00	2,101,428.48
08/11/2025	(Check) Bill Payment	11369491	Donna Thomassen		Checking Placer County	Accounts Payable	-50.00	2,101,378.48
08/11/2025	Deposit		Kevin Ordway	System-recorded deposit for QuickBooks Payments	Placer County Checking	Undeposited Funds	80.00	2,101,458.48
08/11/2025	Expense		QuickBooks Payments	System-recorded fee for QuickBooks Payments. Fee-name: DiscountRateFee, fee-type: Daily.	Placer County Checking	EXPENSES:Bank Charges & C/C Fees	-2.24	2,101,456.24
08/12/2025	Deposit		Diana Hatt	System-recorded deposit for QuickBooks Payments	Placer County Checking	Undeposited Funds	80.00	2,101,536.24
08/12/2025	Expense		QuickBooks Payments	System-recorded fee for QuickBooks Payments. Fee-name: DiscountRateFee, fee-type: Daily.	Placer County Checking	EXPENSES:Bank Charges & C/C Fees	-2.24	2,101,534.00
08/13/2025	Bill Payment (Check)	11370339	Pacific Agribusiness, LLC		Placer County Checking	Accounts Payable	-66,517.39	2,035,016.61
08/13/2025	Deposit			System-recorded deposit for QuickBooks Payments	Placer County Checking	-Split-	160.00	2,035,176.61
08/13/2025	Expense		QuickBooks Payments	System-recorded fee for QuickBooks Payments. Fee-name: DiscountRateFee, fee-type: Daily.	Placer County Checking	EXPENSES:Bank Charges & C/C Fees	-4.48	2,035,172.13
08/14/2025	Deposit			System-recorded deposit for QuickBooks Payments	Placer County Checking	-Split-	240.00	2,035,412.13
08/14/2025	Expense		QuickBooks Payments	System-recorded fee for QuickBooks Payments. Fee-name: DiscountRateFee, fee-type: Daily.	Placer County Checking	EXPENSES:Bank Charges & C/C Fees	-6.72	2,035,405.41
08/15/2025	Deposit		SDRMA		Placer County Checking	Undeposited Funds	251.62	2,035,657.03
08/15/2025	Deposit				Placer County Checking	-Split-	340.00	2,035,997.03
08/15/2025	Deposit			System-recorded deposit for QuickBooks Payments	Placer County Checking	-Split-	880.00	2,036,877.03
08/15/2025	Deposit		City of Grass Valley		Placer County Checking	Undeposited Funds	40,000.00	2,076,877.03
08/15/2025	Expense		QuickBooks Payments	System-recorded fee for QuickBooks Payments. Fee-name: DiscountRateFee, fee-type: Daily.	Placer County Checking	EXPENSES:Bank Charges & C/C Fees	-24.64	2,076,852.39
08/18/2025	Deposit		Greg DeRenne	System-recorded deposit for QuickBooks Payments	Placer County Checking	Undeposited Funds	80.00	2,076,932.39
08/18/2025	Expense		QuickBooks Payments	System-recorded fee for QuickBooks Payments. Fee-name: DiscountRateFee, fee-type: Daily.	Placer County Checking	EXPENSES:Bank Charges & C/C Fees	-2.24	2,076,930.15
08/19/2025	Payment		NRCS		Placer County Checking	Accounts Receivable	530.95	2,077,461.10
08/19/2025	Deposit			CS153360	Placer County Checking	-Split-	107.25	2,077,568.35
08/19/2025	Deposit			CS-153359	Placer County Checking	-Split-	494.62	2,078,062.97
08/20/2025	Deposit		Kenneth Martinelli	System-recorded deposit for QuickBooks Payments	Placer County	Undeposited Funds	80.00	2,078,142.97

Placer County RCD

Transaction Report

August 2025

DATE	TRANSACTION TYPE	NUM	NAME	MEMO/DESCRIPTION	ACCOUNT	SPLIT	AMOUNT	BALANCE
08/20/2025	Expense		QuickBooks Payments	System-recorded fee for QuickBooks Payments. Fee-name: DiscountRateFee, fee-type: Daily.	Checking Placer County Checking	EXPENSES:Bank Charges & C/C Fees	-2.24	2,078,140.73
08/21/2025	Deposit		Kenneth Craig Nordhus	System-recorded deposit for QuickBooks Payments	Placer County Checking	Undeposited Funds	80.00	2,078,220.73
08/21/2025	Expense		QuickBooks Payments	System-recorded fee for QuickBooks Payments. Fee-name: DiscountRateFee, fee-type: Daily.	Placer County Checking	EXPENSES:Bank Charges & C/C Fees	-2.24	2,078,218.49
08/22/2025	Journal Entry	Pay Period 04		RCD Payroll PP#04 period ending, August 08, 2025	Placer County Checking	-Split-	-59,404.79	2,018,813.70
08/22/2025	Deposit			CS reported by Kate	Placer County Checking	-Split-	59.53	2,018,873.23
08/22/2025	Deposit		joe mora jr	System-recorded deposit for QuickBooks Payments	Placer County Checking	Undeposited Funds	120.00	2,018,993.23
08/22/2025	Expense		QuickBooks Payments	System-recorded fee for QuickBooks Payments. Fee-name: DiscountRateFee, fee-type: Daily.	Placer County Checking	EXPENSES:Bank Charges & C/C Fees	-3.36	2,018,989.87
08/24/2025	Deposit		Christina Overmiller	System-recorded deposit for QuickBooks Payments	Placer County Checking	Undeposited Funds	360.00	2,019,349.87
08/24/2025	Expense		QuickBooks Payments	System-recorded fee for QuickBooks Payments. Fee-name: DiscountRateFee, fee-type: Daily.	Placer County Checking	EXPENSES:Bank Charges & C/C Fees	-10.08	2,019,339.79
08/25/2025	Deposit			CS submitted by Kate	Placer County Checking	-Split-	53.63	2,019,393.42
08/26/2025	Deposit			System-recorded deposit for QuickBooks Payments	Placer County Checking	-Split-	160.00	2,019,553.42
08/26/2025	Expense		QuickBooks Payments	System-recorded fee for QuickBooks Payments. Fee-name: DiscountRateFee, fee-type: Daily.	Placer County Checking	EXPENSES:Bank Charges & C/C Fees	-4.48	2,019,548.94
08/27/2025	Bill Payment (Check)	11372844	Steve Brar		Placer County Checking	Accounts Payable	-32,317.99	1,987,230.95
08/27/2025	Bill Payment (Check)	11372836	Far Western Anthropological Research Group, Inc		Placer County Checking	Accounts Payable	-25,387.13	1,961,843.82
08/27/2025	Bill Payment (Check)	11372843	Special District Risk Management Authority		Placer County Checking	Accounts Payable	-24,133.73	1,937,710.09
08/27/2025	Bill Payment (Check)	11372834	Auburn Creekside LLC		Placer County Checking	Accounts Payable	-4,368.00	1,933,342.09
08/27/2025	Bill Payment (Check)	11372837	Gwinn Construction		Placer County Checking	Accounts Payable	-2,540.10	1,930,801.99
08/27/2025	Bill Payment (Check)	11372835	Dario Davidson		Placer County Checking	Accounts Payable	-1,260.00	1,929,541.99
08/27/2025	Bill Payment (Check)	11372842	Sac Ice		Placer County Checking	Accounts Payable	-987.12	1,928,554.87
08/27/2025	Bill Payment (Check)	11372839	Ellen Murphy		Placer County Checking	Accounts Payable	-154.48	1,928,400.39
08/27/2025	Bill Payment (Check)	11372841	Royal Signs and Graphics		Placer County Checking	Accounts Payable	-135.11	1,928,265.28
08/27/2025	Bill Payment (Check)	11372838	Carina Merrick		Placer County Checking	Accounts Payable	-71.25	1,928,194.03
08/27/2025	Bill Payment (Check)	11372840	Reioux, Jerry		Placer County Checking	Accounts Payable	-18.66	1,928,175.37
08/27/2025	Deposit			CS submitted by Kate	Placer County	-Split-	59.53	1,928,234.90

Placer County RCD
Transaction Report
August 2025

DATE	TRANSACTION TYPE	NUM	NAME	MEMO/DESCRIPTION	ACCOUNT	SPLIT	AMOUNT	BALANCE
08/27/2025	Deposit			System-recorded deposit for QuickBooks Payments	Checking Placer County Checking	-Split-	480.00	1,928,714.90
08/27/2025	Expense		QuickBooks Payments	System-recorded fee for QuickBooks Payments. Fee-name: DiscountRateFee, fee-type: Daily.	Placer County Checking	EXPENSES:Bank Charges & C/C Fees	-13.44	1,928,701.46
08/28/2025	Deposit			System-recorded deposit for QuickBooks Payments	Placer County Checking	-Split-	240.00	1,928,941.46
08/28/2025	Deposit				Placer County Checking	-Split-	440.00	1,929,381.46
08/28/2025	Deposit		California Department of Forestry & Fire		Placer County Checking	Undeposited Funds	4,443.52	1,933,824.98
08/28/2025	Deposit		CA Association of Resource Conservation Districts		Placer County Checking	Undeposited Funds	6,469.46	1,940,294.44
08/28/2025	Deposit		Placer County CEO		Placer County Checking	Undeposited Funds	113,209.62	2,053,504.06
08/28/2025	Expense		QuickBooks Payments	System-recorded fee for QuickBooks Payments. Fee-name: DiscountRateFee, fee-type: Daily.	Placer County Checking	EXPENSES:Bank Charges & C/C Fees	-6.72	2,053,497.34
08/29/2025	Deposit			System-recorded deposit for QuickBooks Payments	Placer County Checking	-Split-	480.00	2,053,977.34
08/29/2025	Expense		QuickBooks Payments	System-recorded fee for QuickBooks Payments. Fee-name: DiscountRateFee, fee-type: Daily.	Placer County Checking	EXPENSES:Bank Charges & C/C Fees	-12.00	2,053,965.34
08/30/2025	Journal Entry	August Fuel Charges		Fuel purchased for chipper & forestry team use; pending grant info	Placer County Checking	-Split-	-1,428.31	2,052,537.03
08/30/2025	Journal Entry	Test for Urban Ag CC		Test for Urban Ag CC processing; was to be refunded	Placer County Checking	-Split-	4.00	2,052,541.03
08/30/2025	Journal Entry	EMPE Med Ins W/H		Employee medical deductions txfr from PR Liab	Placer County Checking	-Split-	4,301.34	2,056,842.37
08/30/2025	Journal Entry	Aug '25 Interest Inco		Interest Income pending grants disbursement	Placer County Checking	-Split-	6,936.43	2,063,778.80
08/31/2025	Deposit		Jim Mcanally	System-recorded deposit for QuickBooks Payments	Placer County Checking	Undeposited Funds	80.00	2,063,858.80
08/31/2025	Deposit			System-recorded deposit for QuickBooks Payments	Placer County Checking	-Split-	160.00	2,064,018.80
08/31/2025	Expense		QuickBooks Payments	System-recorded fee for QuickBooks Payments. Fee-name: DiscountRateFee, fee-type: Daily.	Placer County Checking	EXPENSES:Bank Charges & C/C Fees	-4.48	2,064,014.32
08/31/2025	Expense		QuickBooks Payments	System-recorded fee for QuickBooks Payments. Fee-name: DiscountRateFee, fee-type: Daily.	Placer County Checking	EXPENSES:Bank Charges & C/C Fees	-2.24	2,064,012.08
Total for Placer County Checking							\$ - 412,584.15	
TOTAL							\$ - 412,584.15	

A/R Aging Detail Report Placer County RCD							15	
As of August 31, 2025								
Date	Transaction type	Num	Donor full name	Department full name	Due date	Amount	Open balance	PAID as of 9/17/2025
91 or more days past due								
06/30/2024	Journal Entry	CAPGAP AR TO 6.30.24	Yolo County RCD	COMPLETE	06/30/2024	558.09	558.09	
12/31/2024	Invoice	25-2454	CA Association of Resource Conservation Districts	40- Temporarily Restricted Funds:CARCD Workforce Development	12/31/2024	27,013.23	27,013.23	PAID
Total for 91 or more days past due						\$27,571.32	\$27,571.32	
61 - 90 days past due								
06/30/2025	Invoice	25-2799	CA Association of Resource Conservation Districts	40- Temporarily Restricted Funds:CARCD/NRCS Forestry TA	06/30/2025	533.36	533.36	
06/30/2025	Invoice	25-2800	CA Association of Resource Conservation Districts	40- Temporarily Restricted Funds:NRCS - RCPP #2871(FY24)	06/30/2025	4,165.14	4,165.14	
06/30/2025	Invoice	25-2801	CA Association of Resource Conservation Districts	40- Temporarily Restricted Funds:WCB Pollinator Habitat	06/30/2025	643.75	643.75	
06/30/2025	Invoice	25-2960	California Department of Forestry & Fire	Project	06/30/2025	31,476.76	31,476.76	
06/30/2025	Invoice	25-2961	California Department of Forestry & Fire	Mitigation	06/30/2025	25,464.11	25,464.11	
06/30/2025	Invoice	25-2962	California Department of Forestry & Fire	40- Temporarily Restricted Funds:#8GA21903 PCCF Block Grant	06/30/2025	1,986.85	1,986.85	PAID
06/30/2025	Invoice	25-2963	California Department of Forestry & Fire	40- Temporarily Restricted Funds:#8GA23903 PBA Hosted Training	06/30/2025	513.15	513.15	PAID
06/30/2025	Invoice	25-2964	California Department of Forestry & Fire	40- Temporarily Restricted Funds:WUI Grant (CWSF)	06/30/2025	2,722.60	2,722.60	
06/30/2025	Invoice	25-2965	California Department of Forestry & Fire	40- Temporarily Restricted Funds:#8GA23995 WRFS PBPL	06/30/2025	3,454.60	3,454.60	
06/30/2025	Invoice	25-2966	CA Dept of Food and Agriculture	40- Temporarily Restricted Funds:Healthy Soils Program TA	06/30/2025	14,307.71	14,307.71	
06/30/2025	Invoice	25-2967	Placer County Water Agency - Donor	40- Temporarily Restricted Funds:PCWA - Tank Rebate	06/30/2025	3,378.24	3,378.24	
06/30/2025	Invoice	25-2969	California Department of Forestry & Fire	40- Temporarily Restricted Funds:#5GA23100 Placer Sierra Fuels	06/30/2025	67,492.76	67,492.76	
06/30/2025	Invoice	25-2978	NRCS	40- Temporarily Restricted Funds:NRCS Landowner Tech. Assistance	06/30/2025	7,506.85	7,506.85	
06/30/2025	Invoice	25-2979	California Department of Forestry & Fire	40- Temporarily Restricted Funds:#8GA21900 Forestry Newsletter, Website & Committee	06/30/2025	8,925.13	8,925.13	PAID
06/30/2025	Invoice	25-2982	California Department of Forestry & Fire	40- Temporarily Restricted Funds:#5GG23124 PBPL-#2	06/30/2025	31,189.79	31,189.79	
06/30/2025	Invoice	25-2983	California Department of Forestry & Fire	40- Temporarily Restricted Funds:#5TR23109 Chipper Program	06/30/2025	64,006.78	64,006.78	
06/30/2025	Journal Entry	CAPGAP 6.30.25	Yolo County RCD	COMPLETE	06/30/2025	574.42	574.42	
06/30/2025	Invoice	25-2998	CA Dept of Food and Agriculture	40- Temporarily Restricted Funds:Central Sierra HSP Block Grant	06/30/2025	773,512.30	109,260.18	
06/30/2025	Invoice	25-3008	California Department of Forestry & Fire	40- Temporarily Restricted Funds:#8GA21018 Forestry Mentorship Program	06/30/2025	19,324.49	19,324.49	
06/30/2025	Invoice	25-3011	California Department of Forestry & Fire	40- Temporarily Restricted Funds:#5GA21147 North Fork Phase 1B	06/30/2025	16,331.52	16,331.52	
06/30/2025	Invoice	25-3013	Placer County Parks and Open Spaces	40- Temporarily Restricted Funds:PC - Parks Agreement	06/30/2025	4,366.25	4,366.25	
06/30/2025	Journal Entry	FY25WC Refund Due	SDRMA		06/30/2025	3,840.78	3,840.78	
Total for 61 - 90 days past due						\$1,085,717.34	\$421,465.22	
31 - 60 days past due								
06/30/2025	Invoice	25-2863	Ryan Kimler	30 - Board Designated Funds:Chipper Cost Share	07/30/2025	80.00	80.00	
Total for 31 - 60 days past due						\$80.00	\$80.00	
CURRENT								
08/05/2025	Invoice	25-2971	Leslie Warren	30 - Board Designated Funds:Chipper Cost Share	09/04/2025	80.00	80.00	PAID
08/11/2025	Invoice	25-2989	James Taber	30 - Board Designated Funds:Chipper Cost Share	09/10/2025	280.00	280.00	PAID
08/12/2025	Invoice	25-2990	Mark Bonnard	30 - Board Designated Funds:Chipper Cost Share	09/11/2025	80.00	80.00	PAID
08/12/2025	Invoice	25-2993	Don Neal	30 - Board Designated Funds:Chipper Cost Share	09/11/2025	80.00	80.00	PAID
08/13/2025	Invoice	25-3007	Angela Ziegenhorn	30 - Board Designated Funds:Chipper Cost Share	09/12/2025	80.00	80.00	PAID
08/20/2025	Invoice	25-3024	Refugio Cortez	30 - Board Designated Funds:Chipper Cost Share	09/19/2025	80.00	80.00	
08/20/2025	Invoice	25-3025	Richard Nielsen	30 - Board Designated Funds:Chipper Cost Share	09/19/2025	80.00	80.00	PAID
08/20/2025	Invoice	25-3028	Wanda Culp	30 - Board Designated Funds:Chipper Cost Share	09/19/2025	80.00	80.00	
08/28/2025	Invoice	25-3038	Anna Harvey	30 - Board Designated Funds:Chipper Cost Share	09/27/2025	120.00	120.00	
Total for CURRENT						\$960.00	\$960.00	
TOTAL						\$1,114,328.66	\$450,076.54	39,118.36
Accrual Basis Wednesday, September 17, 2025 05:32 PM GMTZ								

PLACER COUNTY RESOURCE CONSERVATION DISTRICT
PARS OPEB Trust Program

Account Report for the Period
8/1/2025 to 8/31/2025

Sarah Jones
Executive Director
Placer County Resource Conservation District
11641 Blocker Drive, Ste 120
Auburn, CA 95603

Account Summary

Source	Beginning Balance as of 8/1/2025	Contributions	Earnings	Expenses	Distributions	Transfers	Ending Balance as of 8/31/2025
OPEB	\$254,192.69	\$0.00	\$4,822.92	\$124.73	\$0.00	\$0.00	\$258,890.88
Totals	\$254,192.69	\$0.00	\$4,822.92	\$124.73	\$0.00	\$0.00	\$258,890.88

Investment Selection

Source	
OPEB	Balanced - Strategic Blend

Investment Objective

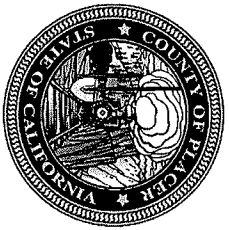
Source	
OPEB	The dual goals of the Balanced Strategy are growth of principal and income. While dividend and interest income are an important component of the objective's total return, it is expected that capital appreciation will comprise a larger portion of the total return. The portfolio will be allocated between equity and fixed income investments.

Investment Return

Source	1-Month	3-Months	1-Year	Annualized Return			Plan's Inception Date
				3-Years	5-Years	10-Years	
OPEB	1.90%	5.96%	9.08%	11.25%	7.63%	7.15%	4/3/2014

Information as provided by US Bank, Trustee for PARS; Not FDIC Insured; No Bank Guarantee; May Lose Value

Past performance does not guarantee future results. Performance returns may not reflect the deduction of applicable fees, which could reduce returns. Information is deemed reliable but may be subject to change.
Investment Return: Annualized rate of return is the return on an investment over a period other than one year multiplied or divided to give a comparable one-year return.
Account balances are inclusive of Trust Administration, Trustee and Investment Management fees



OFFICE OF TRISTAN BUTCHER
TREASURER-TAX COLLECTOR

COUNTY OF PLACER

TREASURER'S POOLED INVESTMENT REPORT

For the Month of August 31, 2025

2976 Richardson Drive, Auburn, CA 95603
Phone: (530) 889-4120 | Fax: (530) 889-4123
www.placer.ca.gov/tax

PREFACE

Placer County Treasurer's Pooled Investment Report

August 31, 2025

For the purpose of clarity, the following glossary of investment terms has been provided.

Book Value is the purchase price of a security plus amortization of any premium or discount. This may be more or less than face value, depending upon whether the security was purchased at a premium or at a discount.

Par Value is the principal amount of a security and the amount of principal that will be paid at maturity.

Market Value is the value at which a security can be sold at the time it is priced or the need to sell arises.

Market values are only relevant if the investment is sold prior to maturity. Profit or loss would be realized only if the specific investment were to be sold.

Government Code 53646 Compliance Report

The following information is a monthly update of funds on deposit in the Placer County Treasury pursuant to California Government code Section 53646. Further details of individual investments are included in the Treasurer's Monthly Investment Report. All investment transactions and decisions have been made with full compliance with California Government Code and Placer County's Statement of Investment Policy.

Individual securities are priced at the end of each month by Wells Fargo Bank.

The Weighted Average Maturity of the investments with the Treasury is 684 days.

The ability of the Placer County Treasury to meet its cash flow needs is demonstrated by \$361,929,177.67 in cash and investments maturing in the next 180 days.



**General Fund
Portfolio Management
Portfolio Summary
August 31, 2025**

Placer County

Investments	Par Value	Market Value	Book Value	% of Portfolio	Term	Days to Maturity	YTM 360 Equiv.	YTM 365 Equiv.
LGIIP	120,000,000.00	120,000,000.00	120,000,000.00	5.56	1	1	4.389	4.450
U.S. Treasury Coupons	760,000,000.00	754,243,898.91	749,317,757.66	34.75	1,063	523	4.055	4.111
mPower Placer - Long Term	2,949,796.07	2,910,049.49	2,952,109.74	0.14	7,339	4,018	4.061	4.117
Federal Agency Coupons	1,039,000,000.00	1,046,445,800.00	1,038,943,714.32	48.18	1,477	875	3.823	3.876
Collateralized Inactive Bank Deposi	5,000,000.00	5,000,000.00	5,000,000.00	0.23	1	1	4.200	4.258
Negotiable Certificates of Deposit	100,000,000.00	100,071,000.00	100,000,000.00	4.64	364	248	4.289	4.349
Collateralized CDs	23,000,000.00	23,000,000.00	23,000,000.00	1.07	366	155	4.147	4.204
Supranational	40,000,000.00	40,700,600.00	40,430,987.73	1.87	1,478	1,332	3.819	3.872
Commercial Paper Disc. -Amortizing	60,000,000.00	60,000,000.00	59,992,900.00	2.78	4	1	4.262	4.321
Local Agency Bond	8,916,585.82	8,302,155.98	8,916,585.82	0.41	7,270	4,634	2.961	3.002
mPower Placer	7,517,871.00	7,171,033.65	7,517,871.00	0.35	7,705	4,967	3.664	3.715
mPower - Folsom	377,103.36	371,154.46	377,103.36	0.02	7,684	4,141	3.446	3.494
Investments	2,166,761,356.25	2,168,215,692.49	2,156,449,029.63	100.00%	1,198	684	3.969	4.024

Cash, Pending Redemptions	16,929,177.67	16,929,177.67	16,929,177.67		1	1	0.000	0.000
Passbook/Checking (not included in yield calculations)								
Pending Redemptions	10,000,000.00	10,000,000.00	10,000,000.00					
Subtotal		26,929,177.67	26,929,177.67					
Total Cash, Pending Redemptions and Investments	2,193,690,533.92	2,195,144,870.16	2,183,378,207.30		1,198	684	3.969	4.024

Total Earnings	August 31 Month Ending	Fiscal Year To Date
Current Year	7,444,883.65	15,727,113.47
Average Daily Balance	2,229,409,490.22	2,347,000,097.79
Effective Rate of Return	3.93%	3.94%

Shank *9/1/25*

Reporting period 08/01/2025-08/31/2025
Data Updated: FUNDSNAP: 09/02/2025 14:12
Run Date: 09/02/2025 - 14:12

0
JONATHAN SCHMIDT, ASST. TREASURER-TAX COLLECTOR

Reporting period 08/01/2025-08/31/2025
Data Updated: FUNDSNAP: 09/02/2025 14:12
Run Date: 09/02/2025 - 14:12

General Fund
Portfolio Management
Portfolio Details - Investments
August 31, 2025

CUSIP	Investment #	Issuer	Average Balance	Purchase Date	Par Value	Market Value	Book Value	Stated Rate	YTM 365	Days to Maturity
LGIIP										
LGIP	22486	California Asset Mgmt Prog			60,000,000.00	60,000,000.00	60,000,000.00	4.450	4.450	1
SYS23345	23345	CalFRUST			60,000,000.00	60,000,000.00	60,000,000.00	4.450	4.450	1
Subtotal and Average			120,000,000.00		120,000,000.00	120,000,000.00	120,000,000.00	4.450	4.450	1

U.S. Treasury Coupons										
91282CBH3	20549	U. S. TREASURY COUPON		03/10/2021	10,000,000.00	9,847,300.00	9,982,732.10	0.375	0.773	152 01/31/2026
91282CBH3	20557	U. S. TREASURY COUPON		03/11/2021	10,000,000.00	9,847,300.00	9,983,519.87	0.375	0.753	152 01/31/2026
91282CBQ3	20558	U. S. TREASURY COUPON		03/11/2021	10,000,000.00	9,828,100.00	9,986,208.68	0.500	0.786	180 02/28/2026
91282CAM3	20590	U. S. TREASURY COUPON		04/07/2021	10,000,000.00	9,968,900.00	9,996,110.93	0.250	0.749	29 09/30/2025
9128282A7	22474	U. S. TREASURY COUPON		04/21/2023	20,000,000.00	19,559,600.00	19,591,738.86	1.500	3.799	348 08/15/2026
9128282R0	22475	U. S. TREASURY COUPON		04/21/2023	20,000,000.00	19,479,600.00	19,487,121.51	2.250	3.681	713 08/15/2027
9128283W8	22476	U. S. TREASURY COUPON		04/21/2023	10,000,000.00	9,803,500.00	9,800,231.58	2.750	3.644	897 02/15/2028
9128283W8	22593	U. S. TREASURY COUPON		06/29/2023	20,000,000.00	19,607,000.00	19,375,426.64	2.750	4.161	897 02/15/2028
91282CHH7	22612	U. S. TREASURY COUPON		07/10/2023	10,000,000.00	10,014,200.00	9,964,409.72	4.125	4.614	287 06/15/2026
91282CGL9	22613	U. S. TREASURY COUPON		07/10/2023	10,000,000.00	9,994,800.00	9,969,269.19	4.000	4.722	167 02/15/2026
91282CHU8	23055	U. S. TREASURY COUPON		08/28/2023	10,000,000.00	10,045,400.00	9,970,879.50	4.375	4.705	348 08/15/2026
91282CGE5	23116	U. S. TREASURY COUPON		10/16/2023	20,000,000.00	19,981,000.00	19,926,581.51	3.875	4.927	136 01/15/2026
91282CHM6	23117	U. S. TREASURY COUPON		10/16/2023	20,000,000.00	20,097,600.00	19,946,666.25	4.500	4.829	317 07/15/2026
912828X88	23118	U. S. TREASURY COUPON		10/16/2023	20,000,000.00	19,575,000.00	19,272,451.22	2.375	4.723	621 05/15/2027
9128284N7	23119	U. S. TREASURY COUPON		10/16/2023	20,000,000.00	19,632,000.00	19,148,247.91	2.875	4.642	987 05/15/2028
91282CGE5	23129	U. S. TREASURY COUPON		10/20/2023	10,000,000.00	9,990,500.00	9,956,097.19	3.875	5.137	136 01/15/2026
91282CHM6	23130	U. S. TREASURY COUPON		10/20/2023	10,000,000.00	10,048,800.00	9,953,889.83	4.500	5.073	317 07/15/2026
912828X88	23131	U. S. TREASURY COUPON		10/20/2023	15,000,000.00	14,681,250.00	14,390,110.56	2.375	5.014	621 05/15/2027
9128284N7	23132	U. S. TREASURY COUPON		10/20/2023	15,000,000.00	14,724,000.00	14,248,772.66	2.875	4.968	987 05/15/2028
91282CHM6	23150	U. S. TREASURY COUPON		11/06/2023	10,000,000.00	10,048,800.00	9,988,903.39	4.500	4.635	317 07/15/2026
91282CGE5	23151	U. S. TREASURY COUPON		11/06/2023	10,000,000.00	9,990,500.00	9,969,756.55	3.875	4.738	136 01/15/2026
91282CHB0	23152	U. S. TREASURY COUPON		11/06/2023	10,000,000.00	9,978,400.00	9,932,247.56	3.625	4.659	256 05/15/2026
91282CHM6	23203	U. S. TREASURY COUPON		12/21/2023	20,000,000.00	19,602,000.00	19,440,336.23	2.875	3.920	1,079 08/15/2028
9128284V9	23204	U. S. TREASURY COUPON		12/21/2023	40,000,000.00	40,195,200.00	40,109,951.97	4.500	4.162	317 07/15/2026
91282CHB0	23205	U. S. TREASURY COUPON		12/21/2023	10,000,000.00	9,978,400.00	9,963,470.32	3.625	4.176	256 05/15/2026
91282CGE5	23206	U. S. TREASURY COUPON		12/21/2023	20,000,000.00	19,981,000.00	19,970,767.20	3.875	4.289	136 01/15/2026
9128282R0	23433	U. S. TREASURY COUPON		07/09/2024	15,000,000.00	14,609,700.00	14,421,317.36	2.250	4.383	713 08/15/2027
9128282R0	23434	U. S. TREASURY COUPON		07/09/2024	20,000,000.00	19,479,600.00	19,232,359.76	2.250	4.372	713 08/15/2027
91282CHH7	24089	U. S. TREASURY COUPON		11/08/2024	20,000,000.00	20,028,400.00	19,985,410.42	4.125	4.220	287 06/15/2026
91282CHX2	24090	U. S. TREASURY COUPON		11/08/2024	10,000,000.00	10,221,100.00	10,056,539.60	4.375	4.167	1,095 08/31/2028
9128284V9	24091	U. S. TREASURY COUPON		11/08/2024	15,000,000.00	14,701,800.00	14,478,045.51	2.875	4.158	1,079 08/15/2028

General Fund
Portfolio Management
Portfolio Details - Investments
August 31, 2025

CUSIP	Investment #	Issuer	Average Balance	Purchase Date	Par Value	Market Value	Book Value	Stated Rate	YTM 365	Days to Maturity	Maturity Date
U.S. Treasury Coupons											
91282CKS9	24092	U. S. TREASURY COUPON		11/08/2024	15,000,000.00	15,097,500.00	15,070,584.36	4.875	4.215	272	05/31/2026
912828PA6	24115	U. S. TREASURY COUPON		12/06/2024	25,000,000.00	24,727,750.00	24,723,202.77	1.625	4.132	167	02/15/2026
91282CHB0	24116	U. S. TREASURY COUPON		12/06/2024	30,000,000.00	29,935,200.00	29,901,714.29	3.625	4.108	256	05/15/2026
91282CHM6	24117	U. S. TREASURY COUPON		12/06/2024	50,000,000.00	50,244,000.00	50,164,822.42	4.500	4.102	317	07/15/2026
91282CGE5	24118	U. S. TREASURY COUPON		12/06/2024	40,000,000.00	39,962,000.00	39,960,123.46	3.875	4.149	136	01/15/2026
91282CJA0	24127	U. S. TREASURY COUPON		12/18/2024	10,000,000.00	10,298,800.00	10,109,386.31	4.625	4.235	1,125	09/30/2028
9128284V9	24128	U. S. TREASURY COUPON		12/18/2024	30,000,000.00	29,403,600.00	28,896,442.86	2.875	4.230	1,079	08/15/2028
9128286B1	24168	U. S. TREASURY COUPON		01/28/2025	40,000,000.00	38,734,400.00	37,906,475.03	2.625	4.290	1,263	02/15/2029
91282CKD2	24209	U. S. TREASURY COUPON		03/05/2025	20,000,000.00	20,429,548.91	20,210,102.31	4.250	3.940	1,276	02/28/2029
9128286X3	24257	U. S. TREASURY COUPON		04/25/2025	15,000,000.00	14,796,750.00	14,802,867.83	2.125	3.942	272	05/31/2026
91282CHM6	24258	U. S. TREASURY COUPON		04/25/2025	15,000,000.00	15,073,200.00	15,072,464.44	4.500	3.921	317	07/15/2026
Subtotal and Average					770,033,095.10	754,243,898.91	749,317,757.66		4.111	523	
mPower Placer - Long Term											
2015NR-A	2015NR-A	mPower Placer		06/16/2015	808,023.77	794,303.53	808,023.77	4.000	3.999	3,653	09/02/2035
2015NR-BLT	2015NR-BLT	mPower Placer		09/02/2016	1,756,890.17	1,720,487.41	1,756,890.17	4.000	4.000	4,019	09/02/2036
72601FAC2	2018B	Public Finance Authority		06/28/2018	384,882.13	395,258.55	387,195.80	5.050	4.894	4,778	10/01/2038
Subtotal and Average					2,949,796.07	2,910,049.49	2,952,109.74		4.117	4,018	
Federal Agency Coupons											
3133EMYE6	20641	FEDERAL FARM CREDIT BANK		05/04/2021	10,000,000.00	9,801,000.00	9,998,650.00	1.000	1.021	245	05/04/2026
3133ERN72	24132	FEDERAL FARM CREDIT BANK		12/19/2024	20,000,000.00	20,236,000.00	20,000,000.00	4.220	4.221	869	01/18/2028
3133ER2R1	24171	FEDERAL FARM CREDIT BANK		01/29/2025	20,000,000.00	20,403,200.00	19,999,307.61	4.310	4.312	1,383	06/15/2029
3133ER2S9	24172	FEDERAL FARM CREDIT BANK		01/29/2025	15,000,000.00	15,303,300.00	14,999,350.44	4.310	4.312	1,390	06/22/2029
3133ER2Q3	24173	FEDERAL FARM CREDIT BANK		01/29/2025	15,000,000.00	15,301,200.00	14,989,481.23	4.310	4.312	1,373	06/05/2029
3133ER2P5	24174	FEDERAL FARM CREDIT BANK		01/29/2025	25,000,000.00	25,515,000.00	25,000,000.00	4.310	4.311	1,451	08/22/2029
3133ER2M2	24175	FEDERAL FARM CREDIT BANK		01/29/2025	25,000,000.00	25,512,000.00	25,000,000.00	4.310	4.310	1,437	08/08/2029
3133ER2N0	24176	FEDERAL FARM CREDIT BANK		01/29/2025	25,000,000.00	25,513,500.00	25,000,000.00	4.310	4.311	1,444	08/15/2029
3133ER6S5	24213	FEDERAL FARM CREDIT BANK		03/06/2025	20,000,000.00	20,161,000.00	20,000,000.00	3.970	3.970	1,466	09/06/2029
3130AKMV4	20503	FEDERAL HOME LOAN BANK		02/01/2021	10,000,000.00	9,839,100.00	9,999,835.37	0.500	0.504	150	01/29/2026
3130ALCV4	20609	FEDERAL HOME LOAN BANK		04/14/2021	10,000,000.00	9,840,300.00	9,991,903.60	0.750	0.923	176	02/24/2026
3130ANJD3	21083	FEDERAL HOME LOAN BANK		08/26/2021	5,000,000.00	4,913,350.00	5,000,000.00	1.750	0.995	359	08/26/2026
3130ANRX0	21084	FEDERAL HOME LOAN BANK		08/26/2021	5,000,000.00	4,873,250.00	5,000,000.00	1.250	1.000	359	08/26/2026
3130ANVS6	21092	FEDERAL HOME LOAN BANK		08/30/2021	10,000,000.00	9,718,700.00	10,000,000.00	1.000	1.001	359	08/26/2026
3130ANNW22	21093	FEDERAL HOME LOAN BANK		08/30/2021	5,000,000.00	4,921,650.00	5,000,000.00	0.850	0.850	177	02/25/2026
3130APUN3	21215	FEDERAL HOME LOAN BANK		11/30/2021	4,000,000.00	3,896,600.00	4,000,000.00	1.250	1.250	361	08/28/2026

General Fund
Portfolio Management
Portfolio Details - Investments
August 31, 2025

CUSIP	Investment #	Issuer	Average Balance	Purchase Date	Par Value	Market Value	Book Value	Stated Rate	YTM 365	Days to Maturity
Federal Agency Coupons										
3130AQCT8	21256	FEDERAL HOME LOAN BANK		12/17/2021	5,000,000.00	4,887,800.00	5,000,000.00	1.330	1.468	319 07/17/2026
3130AVWF5	22491	FEDERAL HOME LOAN BANK		06/03/2023	10,000,000.00	9,977,400.00	10,000,000.00	3.660	3.661	304 07/02/2026
3130AVWA6	22493	FEDERAL HOME LOAN BANK		06/03/2023	20,000,000.00	19,995,600.00	20,000,000.00	3.725	3.726	669 07/02/2027
3130AVWC2	22494	FEDERAL HOME LOAN BANK		05/03/2023	10,000,000.00	9,981,400.00	10,000,000.00	3.615	3.616	854 01/03/2028
3130AW2U3	22511	FEDERAL HOME LOAN BANK		05/16/2023	10,000,000.00	9,971,500.00	10,000,000.00	3.620	3.621	533 02/16/2027
3130AW2V1	22512	FEDERAL HOME LOAN BANK		05/16/2023	10,000,000.00	9,971,800.00	10,000,000.00	3.625	3.626	525 02/08/2027
3130AW2W9	22513	FEDERAL HOME LOAN BANK		05/16/2023	10,000,000.00	9,972,900.00	10,000,000.00	3.635	3.636	518 02/01/2027
3130AW7B0	22527	FEDERAL HOME LOAN BANK		05/23/2023	10,000,000.00	10,002,300.00	10,000,000.00	3.925	3.926	380 09/16/2026
3130AW7C8	22528	FEDERAL HOME LOAN BANK		05/23/2023	10,000,000.00	10,002,300.00	10,000,000.00	3.920	3.921	387 09/23/2026
3130AW7A2	22529	FEDERAL HOME LOAN BANK		05/23/2023	10,000,000.00	10,002,100.00	10,000,000.00	3.930	3.932	368 09/04/2026
3130AW6Z8	22530	FEDERAL HOME LOAN BANK		05/23/2023	10,000,000.00	10,002,500.00	10,000,000.00	3.930	3.931	374 09/10/2026
3130AW6X31	22531	FEDERAL HOME LOAN BANK		05/23/2023	10,000,000.00	9,999,600.00	10,000,000.00	4.180	4.182	7 09/08/2025
3130AW6Y1	22532	FEDERAL HOME LOAN BANK		05/23/2023	10,000,000.00	10,000,000.00	10,000,000.00	4.180	4.182	1 09/02/2025
3130AWFA3	22559	FEDERAL HOME LOAN BANK		06/12/2023	10,000,000.00	10,067,700.00	10,000,000.00	4.060	4.061	737 09/08/2027
3130AWF96	22560	FEDERAL HOME LOAN BANK		06/12/2023	10,000,000.00	10,074,400.00	10,000,000.00	4.020	4.021	889 02/07/2028
3130AWFB1	22565	FEDERAL HOME LOAN BANK		06/13/2023	10,000,000.00	10,068,900.00	10,000,000.00	4.070	4.071	730 09/01/2027
3130AWFC9	22566	FEDERAL HOME LOAN BANK		06/13/2023	10,000,000.00	10,076,500.00	10,000,000.00	4.025	4.026	896 02/14/2028
3130AWL57	22602	FEDERAL HOME LOAN BANK		07/06/2023	20,000,000.00	20,176,200.00	20,000,000.00	4.460	4.461	529 02/12/2027
3130AWL73	22603	FEDERAL HOME LOAN BANK		07/06/2023	10,000,000.00	10,090,300.00	10,000,000.00	4.450	4.451	542 02/25/2027
3130AWL81	22604	FEDERAL HOME LOAN BANK		07/06/2023	10,000,000.00	10,133,100.00	10,000,000.00	4.275	4.276	889 02/07/2028
3130AWL65	22605	FEDERAL HOME LOAN BANK		07/06/2023	20,000,000.00	20,178,800.00	20,000,000.00	4.450	4.451	539 02/22/2027
3130AWL99	22606	FEDERAL HOME LOAN BANK		07/06/2023	20,000,000.00	20,269,800.00	20,000,000.00	4.270	4.271	904 02/22/2028
3130AWMN7	23031	FEDERAL HOME LOAN BANK		08/16/2023	20,000,000.00	20,405,800.00	19,972,772.39	4.375	4.430	1,012 06/09/2028
3130AWWZ9	23032	FEDERAL HOME LOAN BANK		08/16/2023	10,000,000.00	10,128,400.00	10,000,000.00	4.500	4.502	652 06/15/2027
3130AWWX21	23033	FEDERAL HOME LOAN BANK		08/16/2023	10,000,000.00	10,141,200.00	10,000,000.00	4.480	4.480	708 08/10/2027
3130AWWX2	23034	FEDERAL HOME LOAN BANK		08/16/2023	10,000,000.00	10,137,700.00	10,000,000.00	4.470	4.470	703 08/05/2027
3130AWWX6	23035	FEDERAL HOME LOAN BANK		08/16/2023	10,000,000.00	10,126,100.00	10,000,000.00	4.495	4.497	647 06/10/2027
3130AWXB1	23210	FEDERAL HOME LOAN BANK		12/22/2023	15,000,000.00	15,071,850.00	15,000,000.00	3.855	3.855	1,043 07/10/2028
3130AYBJ4	23211	FEDERAL HOME LOAN BANK		12/22/2023	15,000,000.00	15,031,050.00	15,000,000.00	4.000	4.001	497 01/11/2027
3130AYGV2	23232	FEDERAL HOME LOAN BANK		01/11/2024	10,000,000.00	10,024,300.00	10,000,000.00	4.193	4.194	338 08/05/2026
3130AYGR1	23233	FEDERAL HOME LOAN BANK		01/11/2024	15,000,000.00	15,036,150.00	15,000,000.00	4.180	4.181	345 08/12/2026
3130AYGU4	23234	FEDERAL HOME LOAN BANK		01/11/2024	20,000,000.00	20,068,200.00	20,000,000.00	4.110	4.110	491 01/05/2027
3130AYGW0	23235	FEDERAL HOME LOAN BANK		01/11/2024	20,000,000.00	20,175,600.00	20,000,000.00	3.985	3.985	1,225 01/08/2029
3130AYGT7	23236	FEDERAL HOME LOAN BANK		01/11/2024	20,000,000.00	20,144,200.00	20,000,000.00	4.020	4.020	862 01/11/2028
3130AYGP5	23237	FEDERAL HOME LOAN BANK		01/11/2024	20,000,000.00	20,111,400.00	20,000,000.00	4.050	4.050	674 07/07/2027
3130AYGQ3	23238	FEDERAL HOME LOAN BANK		01/11/2024	20,000,000.00	20,161,600.00	20,000,000.00	3.980	3.980	1,038 07/05/2028

General Fund
Portfolio Management
Portfolio Details - Investments
August 31, 2025

CUSIP	Investment #	Issuer	Average Balance	Purchase Date	Par Value	Market Value	Book Value	Stated Rate	YTM 365	Days to Maturity	Maturity Date
Federal Agency Coupons											
3130AYQ6	23260	FEDERAL HOME LOAN BANK		01/29/2024	30,000,000.00	30,175,500.00	30,000,000.00	4.060	4.061	679	07/12/2027
3130AYQ69	23261	FEDERAL HOME LOAN BANK		01/29/2024	15,000,000.00	15,078,450.00	15,000,000.00	4.070	4.071	638	06/01/2027
3130AYQ85	23262	FEDERAL HOME LOAN BANK		01/29/2024	20,000,000.00	20,211,200.00	20,000,000.00	4.040	4.040	1,243	01/26/2029
3130AYQ80	23263	FEDERAL HOME LOAN BANK		01/29/2024	20,000,000.00	20,202,200.00	20,000,000.00	4.057	4.058	1,036	07/03/2028
3130AYQ47	23264	FEDERAL HOME LOAN BANK		01/29/2024	20,000,000.00	20,196,000.00	20,000,000.00	4.062	4.063	1,004	06/01/2028
3130AYQD1	23265	FEDERAL HOME LOAN BANK		01/29/2024	20,000,000.00	20,136,600.00	20,000,000.00	4.060	4.061	742	09/13/2027
3130AYQC3	23266	FEDERAL HOME LOAN BANK		01/29/2024	15,000,000.00	15,084,150.00	15,000,000.00	4.070	4.071	658	06/21/2026
3130B1NC7	23411	FEDERAL HOME LOAN BANK		06/05/2024	15,000,000.00	15,102,900.00	15,000,000.00	4.710	4.713	326	07/24/2026
3130B1XB8	23436	FEDERAL HOME LOAN BANK		07/10/2024	10,000,000.00	10,162,300.00	10,000,000.00	4.300	4.301	1,018	06/15/2028
3130B4CD1	24129	FEDERAL HOME LOAN BANK		12/19/2024	30,000,000.00	30,369,300.00	30,000,000.00	4.110	4.112	1,110	09/15/2028
3130B4CE94	24130	FEDERAL HOME LOAN BANK		12/19/2024	20,000,000.00	20,241,600.00	20,000,000.00	4.080	4.081	1,481	09/21/2029
3130B4CF6	24131	FEDERAL HOME LOAN BANK		12/19/2024	20,000,000.00	20,244,200.00	20,000,000.00	4.080	4.081	1,418	07/20/2029
3130B4LH2	24149	FEDERAL HOME LOAN BANK		01/13/2025	20,000,000.00	20,416,200.00	20,000,000.00	4.370	4.370	1,227	01/10/2029
3130B5GJ1	24212	FEDERAL HOME LOAN BANK		03/06/2025	20,000,000.00	20,168,400.00	20,000,000.00	3.980	3.980	1,466	09/06/2029
3130B5U48	24238	FEDERAL HOME LOAN BANK		04/07/2025	20,000,000.00	20,007,800.00	20,000,000.00	3.750	3.751	1,417	07/19/2029
3130B5W87	24247	FEDERAL HOME LOAN BANK		04/14/2025	15,000,000.00	15,080,250.00	15,000,000.00	3.875	3.876	1,228	01/11/2029
3130B6QL3	24297	FEDERAL HOME LOAN BANK		06/11/2025	10,000,000.00	10,149,900.00	10,000,000.00	4.050	4.051	1,606	01/24/2030
3130B6QM1	24298	FEDERAL HOME LOAN BANK		06/11/2025	10,000,000.00	10,149,900.00	10,000,000.00	4.050	4.051	1,607	01/25/2030
3137EAEX3	20417	FED HOME LOAN MORT CORP		12/15/2020	10,000,000.00	9,977,200.00	9,999,728.52	0.375	0.419	22	09/23/2025
3134GXHY3	21206	FED HOME LOAN MORT CORP		11/22/2021	5,000,000.00	4,876,150.00	4,982,685.16	0.750	1.190	295	06/23/2026
Subtotal and Average			1,054,263,981.05		1,039,000,000.00	1,046,445,800.00	1,038,943,714.32		3.876	875	
Collateralized Inactive Bank Deposi											
SYS19055	19055	Five Star Bank - PJMMA			5,000,000.00	5,000,000.00	5,000,000.00	4.258	4.258	1	
Subtotal and Average			5,000,000.00		5,000,000.00	5,000,000.00	5,000,000.00	4.258	4.258	1	
Negotiable Certificates of Deposit											
22536JQW8	24295	Credit Agricole CIB NY		06/10/2025	10,000,000.00	10,015,500.00	10,000,000.00	4.350	4.410	312	07/10/2026
53947B3X6	24296	Lloyds Bank Corp Mkts NY		06/10/2025	25,000,000.00	25,042,750.00	25,000,000.00	4.360	4.441	312	07/10/2026
89115DZT6	24244	TORONTO DOMINION BANK NY		04/11/2025	15,000,000.00	14,998,950.00	15,000,000.00	4.280	4.339	133	01/12/2026
89115DZX7	24245	TORONTO DOMINION BANK NY		04/11/2025	10,000,000.00	9,998,400.00	10,000,000.00	4.250	4.289	165	02/13/2026
89115DA48	24250	TORONTO DOMINION BANK NY		04/25/2025	20,000,000.00	20,006,600.00	20,000,000.00	4.220	4.279	263	05/22/2026
89115D7L4	24261	TORONTO DOMINION BANK NY		04/25/2025	20,000,000.00	20,008,800.00	20,000,000.00	4.250	4.309	249	05/08/2026
Subtotal and Average			100,000,000.00		100,000,000.00	100,071,000.00	100,000,000.00		4.349	248	

General Fund

Portfolio Management

Portfolio Details - Investments

August 31, 2025

CUSIP	Investment #	Issuer	Average Balance	Purchase Date	Par Value	Market Value	Book Value	Stated Rate	YTM 365	Days to Maturity	Maturity Date
Collateralized CDS											
SYS24153	24153	Five Star Bank - CD		01/06/2025	10,000,000.00	10,000,000.00	10,000,000.00	4.150	4.208	127	01/06/2026
SYS24185	24185	Five Star Bank - CD		02/07/2025	10,000,000.00	10,000,000.00	10,000,000.00	4.190	4.248	161	02/09/2026
SYS24254	24254	River City Bank		04/19/2025	3,000,000.00	3,000,000.00	3,000,000.00	3.990	4.045	230	04/19/2026
	Subtotal and Average		23,000,000.00		23,000,000.00	23,000,000.00	23,000,000.00		4.204	155	
Supranational											
45950KDHO	24236	International Finance Corp		04/04/2025	20,000,000.00	20,404,000.00	20,336,501.26	4.250	3.770	1,400	07/02/2029
4581XOEN4	24243	INTER-AMERICAN DEVELOPMENT BNK		04/11/2025	20,000,000.00	20,296,600.00	20,094,486.47	4.125	3.975	1,263	02/15/2029
	Subtotal and Average		40,493,429.69		40,000,000.00	40,700,600.00	40,430,987.73		3.872	1,332	
Commercial Paper Disc. -Amortizing											
22533TW28	25044	Credit Agricole CIB		08/29/2025	60,000,000.00	60,000,000.00	59,992,900.00	4.260	4.321	1	09/02/2025
	Subtotal and Average		81,124,222.58		60,000,000.00	60,000,000.00	59,992,900.00		4.321	1	
Local Agency Bond											
SYS16098	16098	Ackerman School District		04/03/2017	4,655,686.80	4,437,893.77	4,655,686.80	2.800	2.800	4,232	04/03/2037
SYS17042	17042	Mid Placer Public School Trans		12/21/2017	107,761.94	109,291.08	107,761.94	2.850	2.850	841	12/21/2027
SYS18093	18093	Mid Placer Public School Trans		01/16/2019	374,410.82	381,812.92	374,410.82	3.000	3.000	1,233	01/16/2029
16115	16115	Newcastle Elementary SD		06/30/2017	2,426,371.83	2,020,803.78	2,426,371.83	2.800	2.800	7,972	06/30/2047
SYS23342	23342	Placer Hills Fire Protection		04/03/2024	599,876.73	599,876.73	599,876.73	4.170	4.170	1,310	04/03/2029
SYS23287	23287	Placer CEO Fire		02/01/2024	752,477.70	752,477.70	752,477.70	4.000	4.000	1,249	02/01/2029
	Subtotal and Average		8,916,585.82		8,916,585.82	8,302,155.98	8,916,585.82		3.002	4,634	
mPower Placer											
2016NR-A	2016NR-A	mPower Placer		08/04/2016	2,930,646.45	2,685,263.42	2,930,646.45	3.000	3.042	4,384	09/02/2037
2017 NR	2017 NR	mPower Placer		07/06/2017	19,582.25	17,808.69	19,582.25	3.000	3.042	4,749	09/02/2038
2017 R	2017 R	mPower Placer		07/06/2017	22,503.93	20,465.75	22,503.93	3.000	3.042	4,749	09/02/2038
2018 NR	2018 NR	mPower Placer		07/26/2018	39,242.38	34,269.98	39,242.38	4.500	4.563	5,114	09/02/2039
2018 R	2018 R	mPower Placer		07/12/2018	97,469.43	97,965.55	97,469.43	4.500	4.563	5,114	09/02/2039
2018 S-NR	18003	Pioneer Community Energy		08/09/2018	260,621.29	262,427.40	260,621.29	4.500	4.563	5,114	09/02/2039
2017 S-NR	2017 S-NR	Pioneer Community Energy		09/28/2017	112,093.72	98,663.95	112,093.72	3.000	3.042	4,749	09/02/2038
2017 S-R	2017 S-R	Pioneer Community Energy		07/06/2017	1,055,431.49	962,975.69	1,055,431.49	3.000	3.042	4,749	09/02/2038
2018 S-R	2018 S-R	Pioneer Community Energy		07/12/2018	875,820.78	880,926.82	875,820.78	4.500	4.563	5,114	09/02/2039
2019-20 R-1	2019-20 R-1	Pioneer Community Energy		07/11/2019	679,143.40	682,301.42	679,143.40	4.500	4.563	5,480	09/02/2040
2020-21 R1	2020-21 R1	Pioneer Community Energy		07/23/2020	657,113.95	659,801.55	657,113.95	4.500	4.563	5,845	09/02/2041

Data Updated: FUNDSMAP: 09/02/2025 14:12

Run Date: 09/02/2025 - 14:12

General Fund
Portfolio Management
Portfolio Details - Investments
August 31, 2025

CUSIP	Investment #	Issuer	Average Balance	Purchase Date	Par Value	Market Value	Book Value	Stated Rate	YTM 365	Days to Maturity	Maturity Date
mPower Placer											
2021-22 R1	2021-22 R1	Pioneer Community Energy		08/26/2021	717,919.50	721,560.89	717,919.50	4.500	4.563	6,210	09/02/2042
2016S R-1	2016S R-1	Sierra Valley Energy Authority		01/26/2017	50,282.43	46,562.54	50,282.43	3.000	3.042	4,384	09/02/2037
	Subtotal and Average		7,517,871.00		7,517,871.00	7,171,033.65	7,517,871.00		3.715	4,967	
mPower - Folsom											
2016-1A3 #2	2016-1A3 #2	mPower Folsom		07/14/2016	71,623.85	71,385.34	71,623.85	3.500	3.549	4,384	09/02/2037
2017-1A3 #3	2017-1A3 #3	mPower Folsom		07/27/2017	27,253.69	26,739.96	27,253.69	2.750	2.788	4,749	09/02/2038
MFLA-3	MFLA-3	mPower Folsom		09/01/2015	179,632.42	181,416.17	179,632.42	3.500	3.549	4,019	09/02/2036
MF R-1	MFR-1	mPower Folsom		09/01/2015	98,593.40	91,612.99	98,593.40	3.500	3.549	4,019	09/02/2036
	Subtotal and Average		377,103.36		377,103.36	371,154.46	377,103.36		3.494	4,141	
	Total and Average		2,229,409,490.22		2,166,761,356.25	2,168,215,692.49	2,156,449,029.63		4.024	684	

Data Updated: FUNDSNAP: 09/02/2025 14:12

Run Date: 09/02/2025 - 14:12

General Fund
Portfolio Management
Portfolio Details - Cash
August 31, 2025

CUSIP	Investment #	Issuer	Average Balance	Purchase Date	Par Value	Market Value	Book Value	Stated Rate	YTM Days to 365 Maturity
Cash at Bank									
SYS000000	00000	PLACER COUNTY CASH			16,645,138.00	16,645,138.00	16,645,138.00		0.000 1
Undeposited Receipts									
SYS000000VAULT	00000VAULT	PLACER COUNTY CASH			284,039.67	284,039.67	284,039.67		0.000 1
		Average Balance	0.00						1
Total Cash and Investments			2,229,409,490.22		2,183,690,533.92	2,185,144,870.16	2,173,378,207.30		4.024 684

General Fund
Portfolio Management
Portfolio Details - Pending Redemptions
August 31, 2025

Security #	Investment #	Issuer	Purchase Settlement Date	Mat/Sale Settlement Date	Par Value
U.S. Treasury Coupons					
91282CAJ0	20553	U. S. TREASURY COUPON	03/11/2021	08/31/2025	10,000,000.00
				Subtotal	10,000,000.00
				Total Pending Redemptions	10,000,000.00



**General Fund
Purchases Report
Sorted by Fund - Fund
August 1, 2025 - August 31, 2025**

CUSIP	Investment #	Fund	Sec. Type	Issuer	Original Par Value	Purchase Date	Payment	Principal Purchase	Accrued at Purchase	Rate at Purchase	Maturity Date	YTM	Ending Book Value
General Fund													
63873JV49	25024	1010	ACP	NATXNY	45,000,000.00	08/01/2025	08/04 - At Maturity	44,984,025.00		4.260	08/04/2025	4.262	0.00
63873JV56	25025	1010	ACP	NATXNY	80,000,000.00	08/04/2025	08/05 - At Maturity	79,990,533.33		4.260	08/05/2025	4.260	0.00
63873JV64	25026	1010	ACP	NATXNY	80,000,000.00	08/05/2025	08/06 - At Maturity	79,990,533.33		4.260	08/06/2025	4.260	0.00
63873JV72	25027	1010	ACP	NATXNY	80,000,000.00	08/06/2025	08/07 - At Maturity	79,990,533.33		4.260	08/07/2025	4.260	0.00
63873JV80	25028	1010	ACP	NATXNY	70,000,000.00	08/07/2025	08/08 - At Maturity	69,991,716.66		4.260	08/08/2025	4.260	0.00
63873JV83	25029	1010	ACP	NATXNY	50,000,000.00	08/08/2025	08/11 - At Maturity	49,982,250.00		4.260	08/11/2025	4.262	0.00
63873JVC1	25030	1010	ACP	NATXNY	75,000,000.00	08/11/2025	08/12 - At Maturity	74,991,125.00		4.260	08/12/2025	4.260	0.00
63873JVD9	25031	1010	ACP	NATXNY	70,000,000.00	08/12/2025	08/13 - At Maturity	69,991,716.66		4.260	08/13/2025	4.260	0.00
63873JVE7	25032	1010	ACP	NATXNY	70,000,000.00	08/13/2025	08/14 - At Maturity	69,991,716.66		4.260	08/14/2025	4.260	0.00
63873JVF4	25033	1010	ACP	NATXNY	70,000,000.00	08/14/2025	08/15 - At Maturity	69,991,716.66		4.260	08/15/2025	4.260	0.00
63873JVJ6	25034	1010	ACP	NATXNY	105,000,000.00	08/15/2025	08/18 - At Maturity	104,962,725.00		4.260	08/18/2025	4.262	0.00
63873JVK3	25035	1010	ACP	NATXNY	105,000,000.00	08/16/2025	08/19 - At Maturity	104,967,574.99		4.260	08/19/2025	4.260	0.00
63873JVL1	25036	1010	ACP	NATXNY	105,000,000.00	08/19/2025	08/20 - At Maturity	104,987,574.99		4.260	08/20/2025	4.260	0.00
63873JVM9	25037	1010	ACP	NATXNY	100,000,000.00	08/20/2025	08/21 - At Maturity	99,988,166.66		4.260	08/21/2025	4.260	0.00
63873JVN7	25038	1010	ACP	NATXNY	100,000,000.00	08/21/2025	08/22 - At Maturity	99,988,166.66		4.260	08/22/2025	4.260	0.00
63873JVR8	25039	1010	ACP	NATXNY	100,000,000.00	08/22/2025	08/25 - At Maturity	99,984,500.00		4.260	08/25/2025	4.262	0.00
63873JVS6	25040	1010	ACP	NATXNY	95,000,000.00	08/25/2025	08/26 - At Maturity	94,988,758.33		4.260	08/26/2025	4.260	0.00
63873JVT4	25041	1010	ACP	NATXNY	95,000,000.00	08/26/2025	08/27 - At Maturity	94,988,758.33		4.260	08/27/2025	4.260	0.00
63873JVU1	25042	1010	ACP	NATXNY	130,000,000.00	08/27/2025	08/28 - At Maturity	129,984,616.66		4.260	08/28/2025	4.260	0.00
63873JVV9	25043	1010	ACP	NATXNY	110,000,000.00	08/28/2025	08/29 - At Maturity	109,986,983.33		4.260	08/29/2025	4.260	0.00
22533TWW28	25044	1010	ACP	CACPNY	60,000,000.00	08/29/2025	09/02 - At Maturity	59,971,600.00		4.260	09/02/2025	4.262	59,992,900.00
				Subtotal	1,795,000,000.00			1,794,695,291.58	0.00				59,992,900.00
				Total Purchases	1,795,000,000.00			1,794,695,291.58	0.00				59,992,900.00



PLACER COUNTY 2025/26
Summary by Issuer
August 31, 2025

Placer County

Issuer	Number of Investments	Par Value	Remaining Cost	% of Portfolio	Average YTM 365	Average Days to Maturity
Ackerman School District	1	4,655,686.80	4,655,686.80	0.22	2.800	4,232
Credit Agricole CIB	1	60,000,000.00	59,971,600.00	2.77	4.321	1
California Asset Mgmt Prog	1	60,000,000.00	60,000,000.00	2.77	4.450	1
Credit Agricole CIB NY	1	10,000,000.00	10,000,000.00	0.46	4.410	312
CAITRUST	1	60,000,000.00	60,000,000.00	2.77	4.450	1
FEDERAL FARM CREDIT BANK	9	175,000,000.00	174,987,850.00	8.09	4.074	1,295
FEDERAL HOME LOAN BANK	61	849,000,000.00	848,868,820.00	39.23	3.891	802
FED HOME LOAN MORT CORP	2	15,000,000.00	14,880,900.00	0.69	0.676	113
Five Star Bank - PIMMA	1	5,000,000.00	5,000,000.00	0.23	4.258	1
Five Star Bank - CD	2	20,000,000.00	20,000,000.00	0.92	4.228	144
International Finance Corp	1	20,000,000.00	20,372,320.00	0.94	3.770	1,400
INTER-AMERICAN DEVELOPMENT BNK	1	20,000,000.00	20,105,120.00	0.93	3.975	1,263
Lloyds Bank Corp Mkts NY	1	25,000,000.00	25,000,000.00	1.16	4.441	312
Mid Placer Public School Trans	2	482,172.76	482,172.76	0.02	2.966	1,145
mPower Folsom	4	377,103.36	377,103.36	0.02	3.494	4,141
mPower Placer	7	5,674,358.38	5,674,358.38	0.26	3.511	4,187
Newcastle Elementary SD	1	2,426,371.83	2,426,371.83	0.11	2.800	7,972
Placer Hills Fire Protection	1	599,876.73	599,876.73	0.03	4.170	1,310
Public Finance Authority	1	384,882.13	392,579.77	0.02	4.894	4,778
Pioneer Community Energy	7	4,358,144.13	4,358,144.13	0.20	4.155	5,364
PLACER COUNTY CASH	2	16,929,177.67	16,929,177.67	0.78	0.000	1
Placer CEO Fire	1	752,477.70	752,477.70	0.03	4.000	1,249
River City Bank	1	3,000,000.00	3,000,000.00	0.14	4.045	230

PLACER COUNTY 2025/26
Summary by Issuer
August 31, 2025

Issuer	Number of Investments	Par Value	Remaining Cost	% of Portfolio	Average YTM 365	Average Days to Maturity
Sierra Valley Energy Authority	1	50,282.43	50,282.43	0.00	3.042	4,384
TORONTO DOMINION BANK NY	4	65,000,000.00	65,000,000.00	3.00	4.304	214
U. S. TREASURY COUPON	42	760,000,000.00	739,875,390.63	34.19	4.111	523
Total and Average	157	2,183,690,533.92	2,163,760,232.19	100.00	3.993	679



Placer County Resource Conservation District Job Description

Job Title: Prescribed Fire Program Director
Reports To: Executive Director
FLSA Status: Exempt
Prepared Date: September 2025
Salary Range: As determined by the board approved salary schedule

Position Summary

The Prescribed Fire Program Director is responsible managing the Prescribed Fire Department including supervising department staff and managing programs, and projects related to fuels reduction, prescribed fire preparation and implementation, basic forestry, and natural resources. The role includes implementing and integrating Placer RCD's strategic plan and mission, initiating and stewarding partnerships with a large and varied group of external governmental, research, non-profit, and private partners. The Prescribed Fire Program Director reports to the Executive Director. The position is an "at will", full time benefited position.

The position requires knowledge and experience in fuels reduction, the safe and legal application of prescribed fire, fire effects on native plants, community outreach, and a broad-based natural resource knowledge. It also requires funding and budget development skills, strategic thinking, collaborative leadership, and problem-solving abilities to carry out the Placer RCD's mission. The position requires a strong commitment to natural resource conservation and experience working collaboratively with a wide range of partners and community stakeholders such as RCDs, conservancies, regional agencies, NRCS, USFS, or other similar agencies or nonprofits.

Essential Duties and Responsibilities

The Prescribed Fire Program Director will oversee the Placer RCD's Prescribed Fire programs and projects. They will manage department employees to ensure a productive, successful, and safe work environment. To perform this job successfully, an individual must be able to perform each essential duty satisfactorily. Reasonable accommodations may be made to enable individuals with disabilities to perform the essential functions. Some responsibilities include:

- Program staff supervision, discipline, mentoring, and support including conducting performance reviews and clarifying goals, tasks, and expectations.
- Communicate progress, needs, and updates to office staff, the Executive Director, and board members.
- Prepare and manage budgets, reports, contracts, projections, and schedules.
- Conflict resolution with staff, partners, and stakeholders.
- Provide guidance and oversight of project and grant implementation activities.
- Collaborate with partners and stakeholders to develop, fund, and implement programs/ projects as needed.
- Communicate between staff, project partners, stakeholders, and consultants to implement project, communication, promotional, and outreach initiatives.
- Responsible for grant writing, reporting, and meeting grant and contract deliverables.

Performs tasks related to the application of prescribed fire programs and projects including, but not limited to:

- Developing press releases, burns plans, weather prescriptions, and smoke management plans;
- Conducting landowner technical assistance site visits;
- Schedule and implement prescribed burn training events including workshops and demonstration burns;
- Secure appropriate permits, and act as a liaison with applicable partner agencies and organizations;
- Inventory and maintain Placer RCD equipment for prescribed burns, ensure equipment is operable and undertake repairs if needed, develop and enforce procedures for volunteer use;
- Ensure safety of volunteers and staff with appropriate briefings and training events
- Review and update prescribed fire procedures as necessary;
- Maintain and expand Placer Prescribed Burn Association membership;
- Coordinate and attend public and/or partner meetings and events;
- Collaborate with partners and stakeholders to develop, fund, and implement prescribed burn, natural resources, and prescribed fire outreach-related projects as needed.
- Regular, predictable attendance is required.
- Other duties as assigned

Supervisory Responsibilities

This role has supervisory duties.

Education and Experience

- Bachelor's degree from an accredited school, in environmental planning, natural resource management, fire ecology, forestry, or a related field; Master's degree preferred.
- A minimum of 5 years of experience with a public agency or non-profit, including demonstration of experience in natural resource program development, coordination, and management.
- California State Certified Burn Boss (CARX) certification or NWCG equivalency
- Wildland fire experience preferred

Qualifications

To perform this job successfully, an individual must be able to perform each essential duty satisfactorily. The requirements listed below are representative of the knowledge, skill, and/or ability required. Reasonable accommodations may be made to enable individuals with disabilities to perform the essential functions. The qualifications listed below are representative of the knowledge, skill, and/or ability required.

- Experience in supporting, developing, planning, implementing, and monitoring environmental, conservation, outreach, communication, and education related projects and initiatives.
- Experience with funding and budget development including grant writing, grant management, and reporting.
- Strong ability to engage a wide range of stakeholders and cultures with a variety of people, diverse interests, and temperaments.
- Excellent writing and public speaking skills, strong verbal communication skills
- Highly organized and motivated self-starter with the ability to prioritize.
- Planning - accurately scopes out strategic and work plan implementation; sets objectives and goals and implements appropriately; anticipates and adjusts for problems and roadblocks.
- Will work across many disciplines and therefore must have technical, operational, administrative, communication, and interpersonal skills.
- Advanced situational awareness and ability to remain calm under pressure.
- Understanding of the Incident Command System and ability to follow an appropriate chain of command, particularly when facilitating or leading higher-complexity prescribed burns.
- Knowledge of the application of prescribed fire, fire ecology, and related conservation practices, forestry, watershed stewardship and conservation, native and invasive flora and fauna, and basic hydrology and soil principles.
- Strong computer-related skills including internet software, operating systems, Microsoft Office products including Outlook, Word, and Excel, and proficiency with ArcGIS and other mapping tools.

- Experience and understanding of CEQA/NEPA processes.
- Demonstrates a desire to grow and learn as a person and vocationally.
- Contributes to a fun, positive, safe, and healthy workplace environment.
- Displays a positive attitude, is self-directed, and motivated by Placer RCD's mission.
- Offers creativity, openness to new ideas, and flexibility.
- Team-oriented by accepting responsibility and ownership of projects, exercises discretion, applies trust and integrity to work and relationships, is accountable to Placer RCD's values, and is humble; admits mistakes.
- Is results-oriented and process-driven.
- Is inclusive and curious toward the cultures, attitudes, and personalities of others not like oneself.

Measures of Performance: The Prescribed Fire Program Director shall be considered to be performing in an acceptable manner when the following have been accomplished:

1. *Problem Solving* – Identifies and resolves problems in a timely manner; Gathers and analyzes information skillfully; Develops alternative solutions; Works well in group problem solving situations; Uses reason even when dealing with emotional topics.
2. *Forward Thinking* – Anticipates possible problems and develops contingency plans in advance; Notices trends in the industry or marketplace and develops plans to prepare for opportunities or problems; Anticipates the consequences of situations and information and plans accordingly; Anticipates how individuals and groups will react to situation and information and plans accordingly.
3. *Technical Skills* – Assesses own strengths and weaknesses; Pursues training and development opportunities; Strives to continuously build knowledge and skills; Shares expertise with others; Effectively applies technical knowledge to solve a range of problems; Possesses an in-depth knowledge and skill in a technical area; Develops technical solutions to new or highly complex problems that cannot be solved using existing methods or approaches; Is sought out as an expert to provide advice or solutions in his/her technical area.
4. *Communication* – Ensures that others involved in a project or effort are kept informed about developments and plans; Ensures that important information from his/her management is shared with his/her employees and others as appropriate; Shares ideas and information with others who might find them useful; Uses multiple channels or means to communicate important messages (e.g. memos, newsletters, meetings).
5. *Teamwork* – Balances team and individual responsibilities; Exhibits objectivity and openness to others' views; Gives and welcomes feedback; Contributes to building a positive team spirit; Puts success of team above own interests; Able to build morale and group commitments to goals and objectives; Supports everyone's efforts to succeed; Listens and responds constructively to other team members'

ideas; Offers support for others' ideas and proposals; Is open with other team members about his/her concerns; Expresses disagreement constructively.

6. *Leadership* – Exhibits confidence in self and others; Inspires and motivates others to perform well; Effectively influences actions and opinions of others; Accepts feedback from others; Gives appropriate recognition to others.
7. *Judgment* – Displays willingness to make decisions; Exhibits sound and accurate judgment; Supports and explains reasoning for decisions; Includes appropriate people in decision-making process; Makes timely decisions.
8. *Planning/Organizing* – Prioritizes and plans work activities; Uses time efficiently; Plans for additional resources; Sets goals and objectives; Organizes or schedules other people and their tasks; Develops realistic action plans.
9. *Professionalism* – Approaches others in a tactful manner; Reacts well under pressure; Treats others with respect and consideration regardless of their status or position; Accepts responsibility for own actions; Follows through on commitments.
10. *Quality* – Demonstrates accuracy and thoroughness; Looks for ways to improve and promote quality; Applies feedback to improve performance; Monitors own work to ensure quality.
11. *Adaptability* – Adapts to changes in the work environment; Manages competing demands; Changes approach or method to best fit the situation; Able to deal with frequent changes, delays, or unexpected events.

Language Skills: Ability to read, analyze, and interpret scientific information, financial reports, budgets, policies, procedures, and governmental regulations. Ability to write reports and business correspondence. Ability to effectively research and prepare grant applications. Able to present information and respond to questions from groups of Directors, members, governmental bodies/boards and the general public.

Mathematical Skills: Ability to calculate figures and amounts such as discounts, interest, commissions, proportions, percentages, area, circumference, and volume. Ability to apply concepts of basic algebra and geometry.

Reasoning Ability: Ability to define problems, collect data, establish facts, and draw valid conclusions. Ability to interpret an extensive variety of technical instructions in mathematical or diagram form and deal with several abstract and concrete variables.

Computer Skills: To perform this job successfully, an individual should have knowledge of Internet software and the Microsoft Office Suite of products. Knowledge of mapping and project management software.

Certificates, Licenses, Registrations: A current driver's license and proof of auto insurance are required.

Other Skills and Abilities:

- Ability to manage multiple projects, people, and projects/programs.
- Competent, safe, and proficient tool use (including chainsaws, hand tools, GPS, portable pumps, drip torches, hoses)
- Meeting facilitation, including understanding agency roles and responsibilities.
- Possess qualities of tact, patience, and understanding required to maintain and foster the long-term relationships necessary for the success of project/program coordination process.
- Fire Fighter Type 2 qualifications, RT-130, and ability to pass the arduous work capacity test.

Physical and Emotional Demands

The physical demands described here are representative of those that must be met by an employee to successfully perform the essential functions of this job. Reasonable accommodations may be made to enable individuals with disabilities to perform the essential functions. The inability to cope with a stressful work environment does not constitute a protected disability.

While performing the duties of this job, the employee is required to:

V – Very Often / F – Frequently / O – Occasionally / R - Rarely							
Sit	F	Use keyboard	F	Stoop, kneel, crouch or crawl	F	Hear	V
Stand	V	Use hands to feel	V	Climb or balance	F	Talk	V
Walk	V	Reach with hands/arms	V				

This work may include climbing in and out of streams, digging, lifting, carrying heavy supplies and equipment, planting, etc. during all seasons.

Must frequently lift or move up to 40 pounds. Specific vision abilities required by this job include: close vision, distance vision, color vision, peripheral vision, depth perception and ability to adjust focus. The noise level in the work environment can range from very quiet to very noisy.

Work Environment

The work environment characteristics described here are representative of those an

employee encounters while performing the essential functions of this job. Reasonable accommodations may be made to enable individuals with disabilities to perform the essential functions. While performing the duties of this job, the employee regularly works in outside weather conditions including wet, hot, cold, dusty, smoky and humid conditions. The employee frequently works near moving mechanical parts. The employee is frequently exposed to ambient air, temperature extremes, fumes or airborne particles, traffic, toxic or caustic chemicals, risk of electric shock and vibration.

Employee may need to travel on foot through dense vegetation, while negotiating steep slopes and uneven terrain. The employee may be exposed to occurrences of poison oak, other thorny vegetation and may encounter wildlife such as bears, mountain lions, rattlesnakes, stinging and biting insects for example.

Reasonable accommodations may be made to enable individuals with disabilities to perform the essential functions.

The noise level in the work environment is occasionally very noisy.

Acknowledgements

I have reviewed and understand the above job description and believe it to be accurate and complete. I also understand that the company retains the right to change this job description at any time. I also understand that this job description is not a contract for work.

I certify that I possess all of the "Essential Requirements" of the job outlined herein, except as noted here (If none, so state): _____

I certify that I am fully capable (with or without a reasonable accommodation) of performing all of the essential functions documented herein, and I do not have a physical or mental disability that would jeopardize the health and or safety of my co-workers.

☐ I do not require an accommodation in order to perform the essential functions of this job as indicated in this job description.

☐ I require an accommodation in order to perform the essential function of this job as indicated on this job description. The accommodation I require is:

I understand, and fully agree, that this job description does not constitute a written or implied contract for employment and that my employment relationship with the company is “at will,” for an unspecified duration, and may be terminated at any time by me or the company as specified by Section 2922 of the California Labor Code.

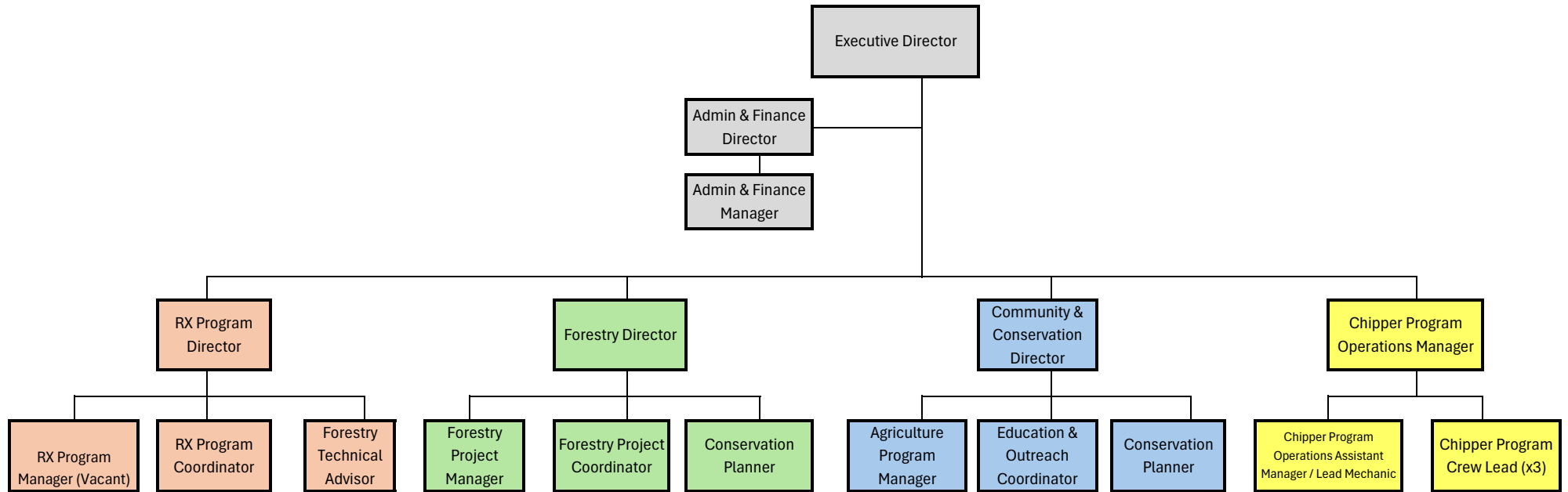
Employee Signature

Date

Executive Director Signature

Date

Placer County Resource Conservation District
2025 Organizational Chart
Date 9/23/2025





**Placer Resource Conservation District
Proposed Fee Schedule - July 1, 2025 - June 30, 2026**

Position	Proposed Billable Rate
Executive Director	\$ 160.00
Administration & Finance Director	\$ 135.00
Administration & Finance Manager	\$ 85.00
Forestry Director	\$ 110.00
Forestry Project Manager	\$ 95.00
Forestry Project Coordinator	\$ 75.00
Conservation Planner	\$ 85.00
Prescribed Fire Program Director	\$ 105.00
Prescribed Fire Program Manager	\$ 95.00
Prescribed Fire Program Coordinator	\$ 65.00
Forestry Technical Advisor	\$ 80.00
Community & Conservation Director	\$ 95.00
Agriculture Program Manager	\$ 85.00
Conservation Planner	\$ 85.00
Education and Outreach Coordinator	\$ 75.00
Chipper Program Operations Manager	\$ 90.00
Chipper Program Operations Asst Manager and Lead Mechanic	\$ 85.00
Chipper Program Lead	\$ 70.00



BRIAN PIMENTEL, Agriculture Program Manager: 2025 Friend of Agriculture Award
Auburn Chamber of Commerce Community Awards

Our very own Brian Pimentel, Agriculture Program Manager is being acknowledged as the Auburn Chamber of Commerce's Celebrate the Community Awards where Brian will be recognized as the 2025 "Friend of Agriculture." We couldn't be prouder of Brian and his dedication to serving the Placer County Ag community. He will be honored at an award ceremony on September 26th recognizes members of our community that keep moving Auburn forward.

Since joining Placer Resource Conservation District (RCD) in September 2020, Brian Pimentel has played a key role in growing and strengthening the Placer RCD Agriculture Program. After wrapping up an 11-month GrizzlyCorps fellowship, he was hired as the Agriculture Project Coordinator and later promoted to Agriculture Program Manager. In both positions he has helped build the program's capacity and impact—both within Placer RCD and through partnerships with other county, state, and federal agencies.

A big part of his work has focused on building solid relationships with local farmers, ranchers, and ag stakeholders. In 2021 he led the creation of a strategic plan for the RCD's Soil Health Program and has been rolling out key pieces of that plan ever since. That includes securing a variety of grants and other funding sources, launching an ag producer and stakeholder listserv for better outreach and organizing 16 workshops on conservation agriculture practices that brought in nearly 300 attendees. He Has also worked to make it easier for producers to get the materials, equipment, and support they need to adopt conservation practices and keep agriculture strong in Placer County.

Since coming on board, Brian has supported landowners and land managers by providing technical assistance 325 times and helped bring over \$3.4 million in funding in the region including more than \$2.8 million in funding to Placer County ag producers through various conservation programs. On top of that, Brian helped develop 66 conservation plans and organized three Local Working Group meetings to better connect local needs with funding. Thanks to these efforts, Placer RCD has built a strong reputation as a regional leader in conservation agriculture.