



**Regular Board Meeting of The Placer County Resource Conservation
District Board of Directors**

**July 22, 2025
11641 Blocker Drive
Auburn, CA 95603
Second floor conference room
4:00pm**

- 1) CALL TO ORDER
- 2) MEMBERS & GUESTS PRESENT
- 3) APPROVAL OF AGENDA
- 4) PUBLIC COMMENT
This time is provided so that people may speak to the board on any item not on this agenda. Public comments are limited to 5 minutes. The board cannot act on items not included on this agenda.
- 5) APPROVAL OF PREVIOUS MINUTES
 - Regular Board Meeting – May 27, 2025
 - Executive Committee Meeting – June 23, 2025
 - Special Meeting – July 1, 2025

The board will review and may act to accept/deny the previous meeting minutes listed
- 6) FINANCIAL REPORTS
 - May 2025 Financial Report
 - June 2025 Financial Report

The board will be given an update by the Administration and Finance Director on recent financial management activities and will review and may act to accept/deny the Placer County Resource Conservation District (Placer RCD, District) May and June 2025 financials
- 7) AGENCY REPORT
- 8) BUSINESS:

New Business:

- a. Employee Acknowledgements
The board will recognize employee anniversaries
Donna Thomassen, 3 years
Scott Stephenson, 2 years
- b. California Environmental Quality Act (CEQA) Notice of Exemption (NOE) for Auburn Shaded Fuel Break Rx Burning
The board will review and may act to approve the CEQA NOE for the Auburn Shaded Fuel Break Rx Burning
- c. California Environmental Quality Act (CEQA) Notice of Exemption (NOE) for Ellinwood Rx Burn
The board will review and may act to approve the CEQA NOE for the Ellinwood Rx Burn
- d. California Environmental Quality Act (CEQA) Notice of Exemption (NOE) for Ferriera Rx Burn
The board will review and may act to approve the CEQA NOE for the Ferriera Rx Burn
- e. Placer County Local Agency Formation Commission (LAFCO) vote for the Special District Alternate Seat
The board will discuss and may vote to select a candidate for the Special District Alternate Seat
- f. California Special District Association (CSDA) Board Elections
The board will discuss and may vote to select a candidate for the CSDA Board
- g. California Association of Resource Conservation Districts (CARCD) FY26 Dues
The board will review and may act to approve the CARCD dues for FY26
- h. Employee Handbook Update
The board will review and may act to accept the Employee Handbook revisions
- i. Seat #4 Discussion
The board will discuss seat #4

9) BOARD DIRECTOR REPORTS/COMMENTS

10) FUTURE AGENDA ITEMS

11) ADJOURNMENT

**PLACER COUNTY RESOURCE CONSERVATION DISTRICT
MINUTES OF THE BOARD OF DIRECTORS
REGULAR MEETING
May 27, 2025**

CALL TO ORDER

The regular meeting of the Placer County Resource Conservation District (District /RCD) Board was called to order by RCD Board Chair Claudia Smith at 4:00 pm in the second-floor conference room at 11641 Blocker Drive in Auburn, CA.

MEMBERS AND OTHERS PRESENT

Directors Present: Claudia Smith
Stephen (Steve) Jones
Kristin Lantz
Jonathan (Jon) Jue
Jim Holmes
Justin Miller

Directors Absent: Patricia (Patti) Beard

Others Present: Donna Thomassen, RCD Employee
Kate Espinola, RCD Employee
Mark Starr, Associate Director
Joe Kausek, Associate Director
Chris Robbins, NRCS
Scott Stephenson, RCD Employee
Andrew Justus-Fritz, RCD Employee
Lewis Campbell, RCD Employee

APPROVAL OF AGENDA

Item (9) to be changed to Board Directors Report. Jim Holmes moved to approve the amended agenda. Kristin Lantz seconded, and the motion passed unanimously.

PUBLIC COMMENT

None to report

APPROVAL OF MEETING MINUTES

Jim Holmes moved to approve the meeting minutes from the regular meeting held on March 25, 2025. Jon Jue seconded, and the motion passed unanimously.

FINANCIAL REPORTS

Donna Thomassen presented the March and April 2025 financial reports. It was disclosed that these reports are subject to change due to any adjusting journal entries. Jon Jue moved to accept the financial reports as presented. Justin Miller seconded, and the motion passed unanimously.

AGENCY REPORT

Chris Robbins, District Conservationist for the NRCS Auburn Area Office, reported that the Auburn office has 13 RCPP contracts totaling 1.5 million dollars and currently has 111 active contracts totaling 5.7 million dollars. The RCD staff are involved in about half of those contracts.

BUSINESS

New Business:

a) Employee Acknowledgements

The board recognized Lewis Campbell and Chad Chaney for their employment anniversaries. Discussion only.

b) Director's Reports

The Forestry Director and Community & Conservation Director presented their quarterly reports. Discussion only.

c) Chipper Program Update

The board was updated on the Chipper Program diverse funding opportunities and the hiring of Anthony Corral as a full-time employee for one year term to accommodate the increased workload. Discussion only.

d) California Environmental Quality Act (CEQA) Notice of Exemption (NOE) for Baxter Shaded Fuel Break

Jim Holmes moved to approve the CEQA NOE for the Baxter Shaded Fuel Break. Steve Jones seconded, and the motion passed unanimously.

e) Request for Proposal (RFP) – Placer Sierra Fuels Reduction Project

Kristin Lantz moved to approve, with corrections, the RFP for the Placer Sierra Fuels Reduction project. Jon Jue seconded, and the motion passed unanimously.

f) Contract Approval – David Curry

Jim Holmes moved to approve the contract for David Curry for the all-staff leadership training. Steve Jones seconded, and the motion passed unanimously.

g) Contract Approval – Carpet Pro

Jon Jue moved to approve the contract with Carpet Pro for office cleaning service. Kristin Lantz seconded, and the motion passed unanimously.

h) Draft 2025 Placer Resource Conservation District Organizational Chart

Jim Holmes moved to approve the 2025 Placer Resource Conservation District Organizational Chart. Steve Jones seconded, and the motion passed unanimously.

i) Board Training Requirements

The board discussed training requirements.

BOARD REPORTS COMMENTS

Jim Holmes reported that he attended the All-Hands Awards and thought it was great.

Claudia Smith reported the Ag tour was great.

FUTURE AGENDA ITEMS

Future agenda items – Board emails and shared drive folder

ADJOURNMENT

The regular meeting was adjourned at 5:34 pm. Jim Holmes moved to adjourn the regular meeting. Steve Jones seconded, and the motion passed unanimously. The next regular meeting is scheduled for June 24, 2025, from 4:00 pm to 6:00 pm in the upstairs conference room at 11641 Blocker Drive, Auburn.

**PLACER COUNTY RESOURCE CONSERVATION DISTRICT
MINUTES OF THE BOARD OF DIRECTORS
EXECUTIVE MEETING
June 23, 2025**

CALL TO ORDER

The Executive Committee meeting of the Placer County Resource Conservation District (District /RCD) Board was called to order by RCD Board Chair Claudia Smith at 4:00 pm in the conference room at 11641 Blocker Drive in Auburn, CA.

MEMBERS AND OTHERS PRESENT

Directors Present: Claudia Smith
Stephen (Steve) Jones
Kristin Lantz

Others Present: Sarah Jones, RCD Employee
Donna Thomassen, RCD Employee
Kate Espinola, RCD Employee
Shelli Anderson, Bryce Consulting

APPROVAL OF AGENDA

Kristin Lantz moved to approve the agenda. Steve Jones seconded, and the motion passed unanimously. It was mentioned that the agenda was posted at the office and on the website but it was not linked to the home page.

PUBLIC COMMENT

None to report

BUSINESS

New Business:

a) Total Compensation Study

The committee reviewed the surveyed agencies, data elements, survey classes, and findings. The committee asked for recommendations on how to move forward.

ADJOURNMENT

The Executive Committee meeting was adjourned at 5:12 pm. Kristin Lantz moved to adjourn the committee meeting. Steve Jones seconded, and the motion passed unanimously. The next special meeting is scheduled for July 1, 2025, from 4:00 pm to 5:00 pm in the conference room at 11641 Blocker Drive, Auburn.

**PLACER COUNTY RESOURCE CONSERVATION DISTRICT
MINUTES OF THE BOARD OF DIRECTORS
SPECIAL MEETING
July 1, 2025**

CALL TO ORDER

The special meeting of the Placer County Resource Conservation District (District /RCD) Board was called to order by RCD Board Chair Claudia Smith at 4:00 pm in the conference room at 11641 Blocker Drive in Auburn, CA.

MEMBERS AND OTHERS PRESENT

Directors Present: Claudia Smith
Stephen (Steve) Jones
Kristin Lantz
Jonathan (Jon) Jue
Jim Holmes

Directors Absent: Patricia (Patti) Beard
Justin Miller

Others Present: Donna Thomassen, RCD Employee
Kate Espinola, RCD Employee
Scott Stephenson, RCD Employee
Brian Pimentel, RCD Employee
Lewis Campbell, RCD Employee
Shelli Anderson, Bryce Consulting

APPROVAL OF AGENDA

Jim Holmes moved to approve the agenda. Jon Jue seconded, and the motion passed unanimously.

PUBLIC COMMENT

None to report

BUSINESS

New Business:

a) 2025 Total Compensation Study

Shelli Anderson with Bryce Consulting presented the 2025 Total Compensation Study Report. Jim Holmes moved to accept the 2025 Total Compensation Study Report. Jon Jue seconded, and the motion passed unanimously.

b) Request for Proposal (RFP) Award- Placer Sierra Fuels Reduction Project

The District recommended awarding Timbersmith Corporation for the Placer Sierra Fuels Reduction project. Jim Holmes moved to award Timbersmith Corporation the contract for the Placer Sierra Fuel Reduction project. Steve Jones seconded, and the motion passed unanimously.

c) Chipper Equipment Purchase

Kristin Lantz moved to approve the Cal-Line Equipment chipper quote. Jon Jue seconded, and the motion passed unanimously. Assigned funds in support of the Chipper Program will cover the cost of this new chipper.

d) Placer County Local Agency Formation Commission (LAFCO) Nomination for the Special District Alternate Seat

Jim Holmes moved to nominate himself for the alternate seat on the LAFCO board. Jon Jue seconded, and the motion passed unanimously.

e) Resolution 25-02 A Resolution of the Board of Directors of the Placer County Resource Conservation District to Delegate Limited Authorities to the Administration & Finance Manager

Jim Holmes moved to approve Resolution 25-02 with corrections to change it to 26-01. Kristin Lantz seconded, and the motion passed unanimously.

FUTURE AGENDA ITEMS

Future agenda items – Executive Committee meeting

ADJOURNMENT

The Special meeting was adjourned at 4:34 pm. Jim Holmes moved to adjourn the special meeting. Steve Jones seconded, and the motion passed unanimously. The next regular meeting is scheduled for July 22, 2025, from 4:00 pm to 6:00 pm in the upstairs conference room at 11641 Blocker Drive, Auburn.

Placer County RCD Profit and Loss

	July 2024 - May 2025	July 2024 - June 2025	Difference
	Total	Total (Not Final)	Between June & July
Income			
CONTRIBUTED SUPPORT			
Chipping Service Contributions	56,745.00	62,885.00	6,140.00
Federal Grants/Contracts	44,998.37	44,998.37	0.00
Foundation/Trust Grants	104,237.90	108,010.40	3,772.50
State Grants	4,159,228.25	4,159,228.26	0.01
Total CONTRIBUTED SUPPORT	\$ 4,365,209.52	\$ 4,375,122.03	\$ 9,912.51
EARNED REVENUES			
Administrative Fees (Indirect Cost)	530,966.47	531,892.47	926.00
County Contracts/Fees	211,419.99	211,419.99	
HPTR Taxes	399.28	399.28	
Interest Income - Operations	54,083.02	63,485.91	9,402.89
Property Tax Revenues	531,289.32	559,742.95	28,453.63
Special District - Income	125,283.46	126,818.63	1,535.17
Surplus Equipment Revenue	65,200.00	92,500.00	27,300.00
Total EARNED REVENUES	\$ 1,518,641.54	\$ 1,586,259.23	\$ 67,617.69
Uncategorized Income	0.00	0.00	0.00
Total Income	\$ 5,883,851.06	\$ 5,961,381.26	\$ 77,530.20
Gross Profit	\$ 5,883,851.06	\$ 5,961,381.26	\$ 77,530.20
Expenses			
EXPENSES			
Accounting, Bookkeeping & Audit	15,550.00	15,550.00	0.00
Bank Charges & C/C Fees	1,610.63	1,773.02	162.39
Contractual Services			0.00
Grants/Agreements/Projects	3,823,872.41	4,167,190.25	343,317.84
Match - Contractual	11,900.00	11,900.00	0.00
Total Grants/Agreements/Projects	\$ 3,835,772.41	\$ 4,179,090.25	\$ 343,317.84
Operations	20,734.62	28,995.13	8,260.51
Total Contractual Services	\$ 3,856,507.03	\$ 4,208,085.38	\$ 351,578.35
Copier Lease	1,415.70	1,544.40	128.70
Education & Training Fees	5,932.20	14,042.88	8,110.68
Equipment			0.00
Equipment Approved by Grantor		5,579.60	5,579.60
Equipment for Shop > \$500	3,217.48	3,217.48	0.00
Office Equipment	1,105.48	1,105.48	0.00
Total Equipment	\$ 4,322.96	\$ 9,902.56	\$ 5,579.60
Indirect and Administrative Fees	0.00	0.00	0.00
Insurance - Health Active	217,270.34	212,969.00	-4,301.34

Insurance - Workmen's Compensation	32,265.04	32,265.04	0.00
Insurance Liability	42,736.88	43,236.88	500.00
Insurance-Health Retirees	30,622.00	33,462.60	2,840.60
LAFCO Fees	551.59	551.59	0.00
Legal Fees	7,977.00	8,573.75	596.75
Materials & Supplies			
Field Supplies inc. Forestry Truck Exp	-2,133.12	-3,917.62	-1,784.50
Fuel	18,008.30	19,441.03	1,432.73
Grants/Agreements/Programs	68,722.53	70,425.98	1,703.45
Office Supplies	6,962.61	6,992.38	29.77
Shop Supplies & Equipment < \$500	7,449.91	7,449.91	0.00
Uniforms/Safety	3,387.03	4,028.81	641.78
Total Materials & Supplies	\$ 102,397.26	\$ 104,420.49	\$ 2,023.23
Meals and Entertainment	6,558.01	9,707.84	3,149.83
Membership Dues	9,812.00	9,812.00	0.00
Other Grant/Program Costs	1,376.43	1,601.96	225.53
Payroll Expenses			
Fringe Benefit Allocation	0.00	0.00	0.00
Leave Wages; Holiday/Vacation/Sick/Comp	175,245.97	204,599.27	29,353.30
Payroll Admin Cost (County)	10,815.43	10,815.43	0.00
Payroll Tax Expense	84,537.89	95,927.16	11,389.27
PERS	93,587.54	106,686.37	13,098.83
Professional Development Leave	18,226.14	32,209.37	13,983.23
Wages	894,769.97	1,009,906.36	115,136.39
Total Payroll Expenses	\$ 1,277,182.94	\$ 1,460,143.96	\$ 182,961.02
Postage & Mail Delivery	514.78	514.78	0.00
Printing & Copying	3,520.45	3,520.45	0.00
Rent Expense	81,427.50	81,427.50	0.00
Repair & Maintenance	7,070.50	11,698.86	4,628.36
Subscriptions	24,768.98	26,715.16	1,946.18
Telephone (Cell) Stipends	5,471.75	6,534.25	1,062.50
Travel & Mileage	25,342.41	28,718.35	3,375.94
Unfunded Retirement Plan Expenses	30,892.00	30,892.00	0.00
Utilities			
PG&E	3,998.79	4,410.52	411.73
Phone/Internet	10,361.49	10,814.44	452.95
Total Utilities	\$ 14,360.28	\$ 15,224.96	\$ 864.68
Total EXPENSES	\$ 5,807,456.66	\$ 6,372,889.66	\$ 565,433.00
Uncategorized Expense	0.00	0.00	0.00
Total Expenses	\$ 5,807,456.66	\$ 6,372,889.66	\$ 565,433.00
Net Operating Income	\$ 76,394.40	-\$ 411,508.40	-\$ 487,902.80
Net Income	\$ 76,394.40	-\$ 411,508.40	-\$ 487,902.80

Balance Sheet Placer County RCD

Distribution account	As of May 30, 2025 Total	As of June 30, 2025 Total
Assets		
Current Assets		
Bank Accounts		
Mechanics Bank		
OPEB-PARS		
Petty Cash		
Placer County Checking	2,986,802.94	2,868,206.67
Checking - Placer County Checking		
Total for Placer County Checking	\$2,986,802.94	\$2,868,206.67
Placer County PR Withholding Account		
Total for Bank Accounts	\$2,986,802.94	\$2,868,206.67
Accounts Receivable		
Accounts Receivable	295,565.44	100,755.89
Accounts Receivable - Reimbursements		1,166.00
Accounts Receivable - SCRMC		
Accounts Receivable - Unbilled	558.09	558.09
Employee Advance		
Total for Accounts Receivable	\$296,123.53	\$102,479.98
Other Current Assets		
Def Outflows - OPEB	35,561.00	35,561.00
Def Outflows - Pension	299,355.00	299,355.00
Prepaid Expenses	0.00	1,020.00
1202 Prepaid Fuel		
Prepaid Expenses - Insurance		23,894.64
Prepaid Rent		6,908.10
Total for Prepaid Expenses	0.00	\$31,822.74
Security Deposit	6,476.80	6,476.80
Undeposited Funds	80.00	25,000.00
Total for Other Current Assets	\$341,472.80	\$398,215.54
Total for Current Assets	\$3,624,399.27	\$3,368,902.19
Fixed Assets		
Leased Assets	141,991.00	141,991.00
Leased Asset - Accumulated Depreciation	-72,947.00	-72,947.00
Leased Assets - Original	172,557.00	172,557.00
Total for Leased Assets	\$241,601.00	\$241,601.00
Machinery and Equipment	0.00	0.00
Machinery & Equipment - Depreciation	-283,377.00	-283,377.00
Machinery & Equipment - Original Cost	777,758.06	777,758.06
Total for Machinery and Equipment	\$494,381.06	\$494,381.06

Office Equipment	0.00	0.00
Office Equipment - Depreciation		
Office Equipment - Original Cost		
Total for Office Equipment	0.00	0.00
Work In Progress		
Total for Fixed Assets	\$735,982.06	\$735,982.06
Other Assets		
Grant Retention	643.74	
Total for Other Assets	\$643.74	0.00
Total for Assets	\$4,361,025.07	\$4,104,884.25
Liabilities and Equity		
Liabilities		
Current Liabilities		
Accounts Payable		
Accounts Payable	70,172.76	213,465.58
Total for Accounts Payable	\$70,172.76	\$213,465.58
Credit Cards		
Cal Card Credit Card	13,919.85	10,322.24
Mechanics Bank Credit Card (7708)	123.00	123.00
Total for Credit Cards	\$14,042.85	\$10,445.24
Other Current Liabilities		
Accrued Leaves Payable	60,533.98	60,533.98
Def Inflows - OPEB		
Def Inflows - Pension	26,279.00	26,279.00
Lease Payable	203,035.00	203,035.00
Lease Payable - Current	54,308.00	54,308.00
Other Post-Employment Benefits		
Salaries and Benefits Payable		65,952.10
Unearned Revenues	0.00	0.00
Due to Placer Sierra Fire Safe Council	8,273.08	33,273.08
Unearned Revenue - CALFire Mosquito 2 HTM#2		
Unearned Revenue - CALFire Mosquito 3 Rec & Ref	606,968.03	606,968.03
Unearned Revenue - CALFire NF Phase II 5GA20108		
Unearned Revenue - CALFire Special Projects		
Unearned Revenue - Central Sierra HSP BG	664,252.06	664,252.06
Unearned Revenue - Forestry Mentorship Program	4,761.62	4,761.62
Unearned Revenue - NACD		
Unearned Revenue - PBPL #8GG19100	538.00	538.00
Unearned Revenue - Red Sesbania Eradication Collaborative Effort	21,957.88	21,957.88
Unearned Revenue - Resource Legacy Fund (WRTC)		
Unearned Revenue - Rose Foundation	26,000.00	26,000.00
Unearned Revenue - Urban & Community Support	650.40	650.40
Unearned Revenue - USF&W Riparian	4,643.17	4,643.17
Unearned Revenue - Wild Turkey Federation		5,000.00

Unearned Revenue - Year End		
Total for Unearned Revenues	\$1,338,044.24	\$1,368,044.24
Vouchers Payable		
Total for Other Current Liabilities	\$1,682,200.22	\$1,778,152.32
Total for Current Liabilities	\$1,766,415.83	\$2,002,063.14
Long-term Liabilities		
Net OPEB Liability	151,570.00	151,570.00
Net Pension Liability	419,800.00	419,800.00
Total for Long-term Liabilities	\$571,370.00	\$571,370.00
Total for Liabilities	\$2,337,785.83	\$2,573,433.14
Equity		
Net Assets	561,338.15	561,338.15
Net Income	80,279.73	-411,508.40
Assigned Funds	902,902.36	902,902.36
Net Investment in Capital Assets	478,639.00	478,639.00
Opening Balance Equity		
Prior Period Adjustment	80.00	80.00
Total for Equity	\$2,023,239.24	\$1,531,451.11
Total for Liabilities and Equity	\$4,361,025.07	\$4,104,884.25

Accrual Basis Friday, July 18, 2025 07:08 PM GMTZ

Transaction Report							
Placer County RCD							15
May 1-June 30, 2025							
Placer County Checking							
Transaction date	Transaction type	Num	Name	Memo/Description	Item split account	Amount	Balance
Beginning Balance							2,162,078.62
05/01/2025	Deposit		Abbas Mehdi:- Abbas Mehdi	System-recorded deposit for QuickBooks Payments	Undeposited Funds	80.00	2,162,158.62
05/01/2025	Expense		QuickBooks Payments	System-recorded fee for QuickBooks Payments. Fee-name: DiscountRateFee, fee-type: Daily.	Bank Charges & C/C Fees	-2.24	2,162,156.38
05/02/2025	Deposit			System-recorded deposit for QuickBooks Payments		240.00	2,162,396.38
05/02/2025	Expense		QuickBooks Payments	System-recorded fee for QuickBooks Payments. Fee-name: DiscountRateFee, fee-type: Daily.	Bank Charges & C/C Fees	-6.72	2,162,389.66
05/02/2025	Journal Entry	Pay Period 22		RCD Payroll PP#22 period ending, April 18, 2025		-56,082.83	2,106,306.83
05/04/2025	Deposit		Stan Hapak	System-recorded deposit for QuickBooks Payments	Undeposited Funds	80.00	2,106,386.83
05/04/2025	Expense		QuickBooks Payments	System-recorded fee for QuickBooks Payments. Fee-name: DiscountRateFee, fee-type: Daily.	Bank Charges & C/C Fees	-2.24	2,106,384.59
05/06/2025	Deposit		Monica Nickel	System-recorded deposit for QuickBooks Payments	Undeposited Funds	80.00	2,106,464.59
05/06/2025	Expense		QuickBooks Payments	System-recorded fee for QuickBooks Payments. Fee-name: DiscountRateFee, fee-type: Daily.	Bank Charges & C/C Fees	-2.24	2,106,462.35
05/07/2025	Deposit			System-recorded deposit for QuickBooks Payments		240.00	2,106,702.35
05/07/2025	Expense		QuickBooks Payments	System-recorded fee for QuickBooks Payments. Fee-name: DiscountRateFee, fee-type: Daily.	Bank Charges & C/C Fees	-6.72	2,106,695.63
05/08/2025	Deposit			System-recorded deposit for QuickBooks Payments		240.00	2,106,935.63
05/08/2025	Expense		QuickBooks Payments	System-recorded fee for QuickBooks Payments. Fee-name: DiscountRateFee, fee-type: Daily.	Bank Charges & C/C Fees	-6.72	2,106,928.91
05/08/2025	Deposit					160.00	2,107,088.91
05/08/2025	Deposit		CA Association of Resource Conservation Districts		Undeposited Funds	881.10	2,107,970.01
05/08/2025	Deposit		CA Association of Resource Conservation Districts		Undeposited Funds	991.83	2,108,961.84
05/08/2025	Deposit		SDRMA	Dental Dividends 2025	Insurance - Health Active	720.05	2,109,681.89
05/08/2025	Deposit			Reimb for meals from attendees for Regional Meeting Lunch	Special District - Income	500.00	2,110,181.89
05/09/2025	Payment		Public Surplus		Accounts Receivable	65,200.00	2,175,381.89
05/09/2025	Deposit			System-recorded deposit for QuickBooks Payments		160.00	2,175,541.89
05/09/2025	Expense		QuickBooks Payments	System-recorded fee for QuickBooks Payments. Fee-name: DiscountRateFee, fee-type: Daily.	Bank Charges & C/C Fees	-4.48	2,175,537.41
05/11/2025	Deposit			System-recorded deposit for QuickBooks Payments		520.00	2,176,057.41
05/11/2025	Expense		QuickBooks Payments	System-recorded fee for QuickBooks Payments. Fee-name: DiscountRateFee, fee-type: Daily.	Bank Charges & C/C Fees	-14.56	2,176,042.85
05/12/2025	Deposit		Bruce Ulrich	System-recorded deposit for QuickBooks Payments	Undeposited Funds	80.00	2,176,122.85
05/12/2025	Expense		QuickBooks Payments	System-recorded fee for QuickBooks Payments. Fee-name: DiscountRateFee, fee-type: Daily.	Bank Charges & C/C Fees	-2.24	2,176,120.61
05/13/2025	Deposit			System-recorded deposit for QuickBooks Payments		160.00	2,176,280.61
05/13/2025	Expense		QuickBooks Payments	System-recorded fee for QuickBooks Payments. Fee-name: DiscountRateFee, fee-type: Daily.	Bank Charges & C/C Fees	-4.48	2,176,276.13
05/14/2025	Deposit		Matt Puska	System-recorded deposit for QuickBooks Payments	Undeposited Funds	80.00	2,176,356.13
05/14/2025	Expense		QuickBooks Payments	System-recorded fee for QuickBooks Payments. Fee-name: DiscountRateFee, fee-type: Daily.	Bank Charges & C/C Fees	-2.24	2,176,353.89
05/15/2025	Bill Payment (Check)	11356703	White, Mark		Accounts Payable	-24.26	2,176,329.63
05/15/2025	Bill Payment (Check)	11356702	Reioux, Jerry		Accounts Payable	-108.70	2,176,220.93
05/16/2025	Deposit			System-recorded deposit for QuickBooks Payments		160.00	2,176,380.93
05/16/2025	Expense		QuickBooks Payments	System-recorded fee for QuickBooks Payments. Fee-name: DiscountRateFee, fee-type: Daily.	Bank Charges & C/C Fees	-4.48	2,176,376.45
05/16/2025	Payment		US Forest Service		Accounts Receivable	777.72	2,177,154.17
05/16/2025	Journal Entry	Pay Period 23		RCD Payroll PP#23 period ending May 02, 2025		-62,423.48	2,114,730.69

05/16/2025	Bill Payment (Check)	11356864	Andrew Fritz		Accounts Payable	-210.55	2,114,520.14
05/16/2025	Bill Payment (Check)	11356867	Brian Pimentel		Accounts Payable	-501.89	2,114,018.25
05/16/2025	Bill Payment (Check)	11356896	Richard Ferreira		Accounts Payable	-200.00	2,113,818.25
05/16/2025	Bill Payment (Check)	11356895	Lilli Kaarakka		Accounts Payable	-533.50	2,113,284.75
05/16/2025	Bill Payment (Check)	11356862	Corn flower Farms, Inc.		Accounts Payable	-960.56	2,112,324.19
05/16/2025	Bill Payment (Check)	11356866	Ellen Murphy		Accounts Payable	-74.54	2,112,249.65
05/16/2025	Bill Payment (Check)	11356868	Scott Stephenson		Accounts Payable	-64.00	2,112,185.65
05/16/2025	Bill Payment (Check)	11356870	Liana Vitousek		Accounts Payable	-824.20	2,111,361.45
05/16/2025	Bill Payment (Check)	11356869	Donna Thomassen		Accounts Payable	-50.00	2,111,311.45
05/16/2025	Bill Payment (Check)	11356863	Espinola, Katie P.		Accounts Payable	-71.28	2,111,240.17
05/16/2025	Bill Payment (Check)	11356894	April Rubinchik		Accounts Payable	-399.60	2,110,840.57
05/16/2025	Bill Payment (Check)	11356865	Sarah Jones		Accounts Payable	-335.70	2,110,504.87
05/18/2025	Deposit			System-recorded deposit for QuickBooks Payments		240.00	2,110,744.87
05/18/2025	Deposit		AMY GRIGGS	System-recorded deposit for QuickBooks Payments	Undeposited Funds	80.00	2,110,824.87
05/18/2025	Expense		QuickBooks Payments	System-recorded fee for QuickBooks Payments. Fee-name: DiscountRateFee, fee-type: Daily.	Bank Charges & C/C Fees	-6.72	2,110,818.15
05/18/2025	Expense		QuickBooks Payments	System-recorded fee for QuickBooks Payments. Fee-name: DiscountRateFee, fee-type: Daily.	Bank Charges & C/C Fees	-2.24	2,110,815.91
05/19/2025	Deposit		Ian Bergman	System-recorded deposit for QuickBooks Payments	Undeposited Funds	80.00	2,110,895.91
05/19/2025	Expense		QuickBooks Payments	System-recorded fee for QuickBooks Payments. Fee-name: DiscountRateFee, fee-type: Daily.	Bank Charges & C/C Fees	-2.24	2,110,893.67
05/19/2025	Bill Payment (Check)	11357014	CARCD		Accounts Payable	-5,180.98	2,105,712.69
05/19/2025	Bill Payment (Check)	11357054	Christopher Garza		Accounts Payable	-472.60	2,105,240.09
05/19/2025	Bill Payment (Check)	11357015	Lewis Campbell		Accounts Payable	-594.98	2,104,645.11
05/19/2025	Bill Payment (Check)	11357019	Davinder Gill		Accounts Payable	-4,257.05	2,100,388.06
05/19/2025	Bill Payment (Check)	11357011	Ann Ainsley Thomas		Accounts Payable	-12,694.20	2,087,693.86
05/19/2025	Bill Payment (Check)	11357013	Bryce Consulting		Accounts Payable	-3,800.00	2,083,893.86
05/19/2025	Bill Payment (Check)	11357010	Amador County RCD		Accounts Payable	-2,226.65	2,081,667.21
05/19/2025	Bill Payment (Check)	11357021	Gwinn Construction		Accounts Payable	-2,540.10	2,079,127.11
05/19/2025	Bill Payment (Check)	11357012	Auburn Creekside LLC		Accounts Payable	-4,368.00	2,074,759.11
05/19/2025	Bill Payment (Check)	11357020	Gresham, Richard		Accounts Payable	-1,881.20	2,072,877.91
05/19/2025	Bill Payment (Check)	11357025	White, Mark		Accounts Payable	-1,900.00	2,070,977.91
05/19/2025	Bill Payment (Check)	11357022	Red Mountain Resource LLC		Accounts Payable	-5,143.50	2,065,834.41
05/19/2025	Bill Payment (Check)	11357024	Volcano Creek Enterprises, Inc.		Accounts Payable	-4,000.00	2,061,834.41
05/19/2025	Bill Payment (Check)	11357016	Commerce Printing		Accounts Payable	-2,163.23	2,059,671.18
05/19/2025	Bill Payment (Check)	11357023	Special District Risk Management Authority		Accounts Payable	-22,306.38	2,037,364.80
05/19/2025	Bill Payment (Check)	11357017	Cordi Craig		Accounts Payable	-1,051.05	2,036,313.75
05/19/2025	Bill Payment (Check)	11357018	Georgetown Divide RCD		Accounts Payable	-10,709.07	2,025,604.68
05/19/2025	Deposit		Placer County Water Agency - Donor		Undeposited Funds	500.00	2,026,104.68
05/19/2025	Deposit					160.00	2,026,264.68
05/19/2025	Deposit		California Department of Forestry & Fire			741,469.88	2,767,734.56
05/19/2025	Deposit		Placer County CEO		Undeposited Funds	72,859.67	2,840,594.23
05/19/2025	Journal Entry	11352933		Void Check; balance due will be taken from credit pending		84.00	2,840,678.23
05/20/2025	Deposit			System-recorded deposit for QuickBooks Payments		480.00	2,841,158.23
05/20/2025	Expense		QuickBooks Payments	System-recorded fee for QuickBooks Payments. Fee-name: DiscountRateFee, fee-type: Daily.	Bank Charges & C/C Fees	-13.44	2,841,144.79
05/21/2025	Expense		QuickBooks Payments	System-recorded fee for QuickBooks Payments. Fee-name: DiscountRateFee, fee-type: Daily.	Bank Charges & C/C Fees	-9.76	2,841,135.03
05/21/2025	Journal Entry	REENTRY		Firpo		400.00	2,841,535.03

05/22/2025	Deposit			System-recorded deposit for QuickBooks Payments		160.00	2,841,695.03
05/22/2025	Expense		QuickBooks Payments	System-recorded fee for QuickBooks Payments. Fee-name: DiscountRateFee, fee-type: Daily.	Bank Charges & C/C Fees	-4.48	2,841,690.55
05/23/2025	Deposit			System-recorded deposit for QuickBooks Payments		480.00	2,842,170.55
05/23/2025	Expense		QuickBooks Payments	System-recorded fee for QuickBooks Payments. Fee-name: DiscountRateFee, fee-type: Daily.	Bank Charges & C/C Fees	-13.44	2,842,157.11
05/25/2025	Deposit		Rebecca Redding	System-recorded deposit for QuickBooks Payments	Undeposited Funds	80.00	2,842,237.11
05/25/2025	Expense		QuickBooks Payments	System-recorded fee for QuickBooks Payments. Fee-name: DiscountRateFee, fee-type: Daily.	Bank Charges & C/C Fees	-2.24	2,842,234.87
05/26/2025	Deposit			System-recorded deposit for QuickBooks Payments		160.00	2,842,394.87
05/26/2025	Expense		QuickBooks Payments	System-recorded fee for QuickBooks Payments. Fee-name: DiscountRateFee, fee-type: Daily.	Bank Charges & C/C Fees	-4.48	2,842,390.39
05/27/2025	Deposit			System-recorded deposit for QuickBooks Payments		160.00	2,842,550.39
05/27/2025	Expense		QuickBooks Payments	System-recorded fee for QuickBooks Payments. Fee-name: DiscountRateFee, fee-type: Daily.	Bank Charges & C/C Fees	-4.48	2,842,545.91
05/28/2025	Deposit			System-recorded deposit for QuickBooks Payments		160.00	2,842,705.91
05/28/2025	Expense		QuickBooks Payments	System-recorded fee for QuickBooks Payments. Fee-name: DiscountRateFee, fee-type: Daily.	Bank Charges & C/C Fees	-4.48	2,842,701.43
05/29/2025	Deposit			System-recorded deposit for QuickBooks Payments		200.00	2,842,901.43
05/29/2025	Expense		QuickBooks Payments	System-recorded fee for QuickBooks Payments. Fee-name: DiscountRateFee, fee-type: Daily.	Bank Charges & C/C Fees	-5.60	2,842,895.83
05/30/2025	Deposit			System-recorded deposit for QuickBooks Payments		240.00	2,843,135.83
05/30/2025	Expense		QuickBooks Payments	System-recorded fee for QuickBooks Payments. Fee-name: DiscountRateFee, fee-type: Daily.	Bank Charges & C/C Fees	-6.72	2,843,129.11
05/30/2025	Deposit					176,879.78	3,020,008.89
05/30/2025	Deposit					240.00	3,020,248.89
05/30/2025	Journal Entry	Pay Period 24		RCD Payroll PP#24 period ending, May 16, 2025		-56,126.19	2,964,122.70
05/30/2025	Journal Entry	Prop Tax May '25		To allocate the RPTFF (Redevelopment Property Tax Trust Fund) by 06/01/2025, pursuant to ABX1-26, Statutes of 2011 and AB1484, Statutes of 2012 for the Former Placer County RDA.		2,579.69	2,966,702.39
05/30/2025	Journal Entry	Prop Tax May '25		To allocate the RPTFF (Redevelopment Property Tax Trust Fund) by 06/01/2025, pursuant to ABX1-26, Statutes of 2011 and AB1484, Statutes of 2012 for the Former City of Auburn RDA.		386.19	2,967,088.58
05/30/2025	Journal Entry	Prop Tax May '25		To allocate the RPTFF (Redevelopment Property Tax Trust Fund) by 06/01/2025, pursuant to ABX1-26, Statutes of 2011 and AB1484, Statutes of 2012 for the Former City of Lincoln RDA.		943.24	2,968,031.82
05/30/2025	Journal Entry	Prop Tax May '25		To allocate the RPTFF (Redevelopment Property Tax Trust Fund) by 06/01/2025, pursuant to ABX1-26, Statutes of 2011 and AB1484, Statutes of 2012 for the Former City of Rocklin RDA.		3,022.72	2,971,054.54
05/30/2025	Journal Entry	Prop Tax May '25		To allocate the RPTFF (Redevelopment Property Tax Trust Fund) by 06/01/2025, pursuant to ABX1-26, Statutes of 2011 and AB1484, Statutes of 2012 for the Former City of Roseville RDA.		614.86	2,971,669.40
05/30/2025	Journal Entry	Prop Tax May '26		To apportion the 15% HOPTR monies received and deposited 05/30/254 via CS148188		399.28	2,972,068.68
05/30/2025	Journal Entry	Interest May 2025		May '25 Interest pending Grant Interest details		8,300.27	2,980,368.95
05/30/2025	Journal Entry	EMPEE INS		Employee w/holding for health insurance transferred held in PR withholding acct May 2025		6,433.99	2,986,802.94
05/31/2025	Journal Entry	May Legal Services		May Legal Fees		-712.25	2,986,090.69
05/31/2025	Journal Entry	Chrg		April Fuel Charges		-1,650.71	2,984,439.98
05/31/2025	Journal Entry	Chrg		May Fuel Charges		-1,522.37	2,982,917.61
06/01/2025	Deposit		Julie Caceres:- Julie Caceres	System-recorded deposit for QuickBooks Payments	Undeposited Funds	80.00	2,982,997.61
06/01/2025	Deposit			System-recorded deposit for QuickBooks Payments		160.00	2,983,157.61
06/01/2025	Expense		QuickBooks Payments	System-recorded fee for QuickBooks Payments. Fee-name: DiscountRateFee, fee-type: Daily.	Bank Charges & C/C Fees	-2.24	2,983,155.37
06/01/2025	Expense		QuickBooks Payments	System-recorded fee for QuickBooks Payments. Fee-name: DiscountRateFee, fee-type: Daily.	Bank Charges & C/C Fees	-4.48	2,983,150.89
06/02/2025	Deposit			System-recorded deposit for QuickBooks Payments		280.00	2,983,430.89
06/02/2025	Expense		QuickBooks Payments	System-recorded fee for QuickBooks Payments. Fee-name: DiscountRateFee, fee-type: Daily.	Bank Charges & C/C Fees	-7.84	2,983,423.05

06/04/2025	Bill Payment (Check)	6.4.25	County of Placer Document Solutions		Accounts Payable	-44.19	2,983,378.86
06/05/2025	Deposit			System-recorded deposit for QuickBooks Payments		160.00	2,983,538.86
06/05/2025	Expense		QuickBooks Payments	System-recorded fee for QuickBooks Payments. Fee-name: DiscountRateFee, fee-type: Daily.	Bank Charges & C/C Fees	-4.48	2,983,534.38
06/06/2025	Deposit		Public Surplus	Sale of Track Chipper	Surplus Equipment Revenue	27,300.00	3,010,834.38
06/06/2025	Deposit			System-recorded deposit for QuickBooks Payments		160.00	3,010,994.38
06/06/2025	Expense		QuickBooks Payments	System-recorded fee for QuickBooks Payments. Fee-name: DiscountRateFee, fee-type: Daily.	Bank Charges & C/C Fees	-4.48	3,010,989.90
06/06/2025	Bill Payment (Check)	11360208	Kistler, Santo, Domingo Rancher, Inc.		Accounts Payable	-26,851.32	2,984,138.58
06/06/2025	Bill Payment (Check)	11360215	Cary Roulet		Accounts Payable	-2,951.44	2,981,187.14
06/06/2025	Bill Payment (Check)	11360219	TUV SUD America, Inc.		Accounts Payable	-5,968.10	2,975,219.04
06/06/2025	Bill Payment (Check)	11360213	TeamLogic IT		Accounts Payable	-1,020.00	2,974,199.04
06/06/2025	Bill Payment (Check)	11360214	Red Mountain Resource LLC		Accounts Payable	-24,300.00	2,949,899.04
06/06/2025	Bill Payment (Check)	11360216	Scott Thorne Environ Consult,		Accounts Payable	-1,240.00	2,948,659.04
06/06/2025	Bill Payment (Check)	11360201	Cal-Line Equipment		Accounts Payable	-3,624.09	2,945,034.95
06/06/2025	Bill Payment (Check)	11360267	Jakaila Burrell		Accounts Payable	-600.00	2,944,434.95
06/06/2025	Bill Payment (Check)	11360200	Quality Window Coverings		Accounts Payable	-711.11	2,943,723.84
06/06/2025	Bill Payment (Check)	11360211	Ellen Murphy		Accounts Payable	-50.00	2,943,673.84
06/06/2025	Bill Payment (Check)	11360204	David Curry		Accounts Payable	-300.00	2,943,373.84
06/06/2025	Bill Payment (Check)	11360217	Scott Stephenson		Accounts Payable	-50.00	2,943,323.84
06/06/2025	Bill Payment (Check)	11360221	Liana Vitousek		Accounts Payable	-183.00	2,943,140.84
06/06/2025	Bill Payment (Check)	11360218	Donna Thomassen		Accounts Payable	-50.00	2,943,090.84
06/06/2025	Bill Payment (Check)	11360206	Far Western Anthropological Research Group, Inc		Accounts Payable	-973.22	2,942,117.62
06/06/2025	Bill Payment (Check)	11360202	Lewis Campbell		Accounts Payable	-419.32	2,941,698.30
06/06/2025	Bill Payment (Check)	11360207	Andrew Fritz		Accounts Payable	-81.52	2,941,616.78
06/06/2025	Bill Payment (Check)	11360212	Brian Pimentel		Accounts Payable	-92.84	2,941,523.94
06/06/2025	Bill Payment (Check)	11360203	Cordi Craig		Accounts Payable	-433.35	2,941,090.59
06/06/2025	Bill Payment (Check)	11360210	Darca Morgan		Accounts Payable	-460.00	2,940,630.59
06/06/2025	Bill Payment (Check)	11360222	White, Mark		Accounts Payable	-23.70	2,940,606.89
06/06/2025	Bill Payment (Check)	11360205	Espinola, Katie P.		Accounts Payable	-73.94	2,940,532.95
06/06/2025	Bill Payment (Check)	11360209	Maloney, Kathryn L.		Accounts Payable	-950.00	2,939,582.95
06/06/2025	Bill Payment (Check)	11360266	William Brown		Accounts Payable	-11.34	2,939,571.61
06/06/2025	Bill Payment (Check)	11360268	Veronica Powell		Accounts Payable	-81.76	2,939,489.85
06/06/2025	Bill Payment (Check)	11360265	Leigh Ambrose		Accounts Payable	-101.22	2,939,388.63
06/06/2025	Bill Payment (Check)	11360269	Hannah (Malakai) Salcido		Accounts Payable	-31.21	2,939,357.42
06/06/2025	Check	11360220			Cal Card Credit Card	-11,171.56	2,928,185.86
06/09/2025	Payment		One Tree Planted, Inc.		Accounts Receivable	11,900.00	2,940,085.86
06/09/2025	Deposit			System-recorded deposit for QuickBooks Payments		160.00	2,940,245.86
06/09/2025	Expense		QuickBooks Payments	System-recorded fee for QuickBooks Payments. Fee-name: DiscountRateFee, fee-type: Daily.	Bank Charges & C/C Fees	-4.48	2,940,241.38
06/10/2025	Deposit			System-recorded deposit for QuickBooks Payments		160.00	2,940,401.38
06/10/2025	Expense		QuickBooks Payments	System-recorded fee for QuickBooks Payments. Fee-name: DiscountRateFee, fee-type: Daily.	Bank Charges & C/C Fees	-4.48	2,940,396.90
06/11/2025	Deposit			System-recorded deposit for QuickBooks Payments		560.00	2,940,956.90
06/11/2025	Expense		QuickBooks Payments	System-recorded fee for QuickBooks Payments. Fee-name: DiscountRateFee, fee-type: Daily.	Bank Charges & C/C Fees	-15.68	2,940,941.22
06/12/2025	Deposit			System-recorded deposit for QuickBooks Payments		160.00	2,941,101.22
06/12/2025	Expense		QuickBooks Payments	System-recorded fee for QuickBooks Payments. Fee-name: DiscountRateFee, fee-type: Daily.	Bank Charges & C/C Fees	-4.48	2,941,096.74
06/13/2025	Journal Entry	Pay Period 25		RCD Payroll PP#25 period ending, May 30, 2025		-57,398.15	2,883,698.59

06/13/2025	Deposit			System-recorded deposit for QuickBooks Payments		160.00	2,883,858.59
06/13/2025	Expense		QuickBooks Payments	System-recorded fee for QuickBooks Payments. Fee-name: DiscountRateFee, fee-type: Daily.	Bank Charges & C/C Fees	-4.48	2,883,854.11
06/13/2025	Deposit		California Department of Forestry & Fire			132,759.86	3,016,613.97
06/13/2025	Deposit		CalCard	1Q2025 Rebate	Special District - Income	369.17	3,016,983.14
06/16/2025	Deposit			System-recorded deposit for QuickBooks Payments		160.00	3,017,143.14
06/16/2025	Expense		QuickBooks Payments	System-recorded fee for QuickBooks Payments. Fee-name: DiscountRateFee, fee-type: Daily.	Bank Charges & C/C Fees	-4.48	3,017,138.66
06/16/2025	Bill Payment (Check)	11361298	Taylor Meade		Accounts Payable	-573.31	3,016,565.35
06/16/2025	Bill Payment (Check)	11361297	Francisco De La Torre		Accounts Payable	-393.42	3,016,171.93
06/17/2025	Deposit			System-recorded deposit for QuickBooks Payments		320.00	3,016,491.93
06/17/2025	Expense		QuickBooks Payments	System-recorded fee for QuickBooks Payments. Fee-name: DiscountRateFee, fee-type: Daily.	Bank Charges & C/C Fees	-8.96	3,016,482.97
06/18/2025	Deposit			System-recorded deposit for QuickBooks Payments		320.00	3,016,802.97
06/18/2025	Expense		QuickBooks Payments	System-recorded fee for QuickBooks Payments. Fee-name: DiscountRateFee, fee-type: Daily.	Bank Charges & C/C Fees	-8.96	3,016,794.01
06/18/2025	Deposit		California Department of Forestry & Fire		Undeposited Funds	1,255.89	3,018,049.90
06/18/2025	Deposit		CA Association of Resource Conservation Districts		Undeposited Funds	24,902.58	3,042,952.48
06/18/2025	Deposit		Watershed Research & Training Center		Undeposited Funds	26,276.71	3,069,229.19
06/19/2025	Deposit		Gene Sunderman	System-recorded deposit for QuickBooks Payments	Undeposited Funds	80.00	3,069,309.19
06/19/2025	Expense		QuickBooks Payments	System-recorded fee for QuickBooks Payments. Fee-name: DiscountRateFee, fee-type: Daily.	Bank Charges & C/C Fees	-2.24	3,069,306.95
06/19/2025	Bill Payment (Check)	11361636	Davinder Gill		Accounts Payable	-15,411.59	3,053,895.36
06/19/2025	Bill Payment (Check)	11361635	Baljit S. Gill		Accounts Payable	-29,949.88	3,023,945.48
06/19/2025	Bill Payment (Check)	11361634	Georgetown Divide RCD		Accounts Payable	-2,263.78	3,021,681.70
06/19/2025	Bill Payment (Check)	11361633	Bryce Consulting		Accounts Payable	-1,520.00	3,020,161.70
06/19/2025	Bill Payment (Check)	11361644	White, Mark		Accounts Payable	-1,900.00	3,018,261.70
06/19/2025	Bill Payment (Check)	11361637	Gresham, Richard		Accounts Payable	-940.60	3,017,321.10
06/19/2025	Bill Payment (Check)	11361639	Harris Industrial Gases		Accounts Payable	-5,579.60	3,011,741.50
06/19/2025	Bill Payment (Check)	11361643	Cheryl Dimson		Accounts Payable	-16,339.08	2,995,402.42
06/19/2025	Bill Payment (Check)	11361640	PT Ranch		Accounts Payable	-73,484.25	2,921,918.17
06/19/2025	Bill Payment (Check)	11361641	TeamLogic IT		Accounts Payable	-1,020.00	2,920,898.17
06/19/2025	Bill Payment (Check)	11361638	Gwinn Construction		Accounts Payable	-2,540.10	2,918,358.07
06/19/2025	Bill Payment (Check)	11361632	Auburn Creekside LLC		Accounts Payable	-4,368.00	2,913,990.07
06/19/2025	Bill Payment (Check)	11361642	Special District Risk Management Authority		Accounts Payable	-23,894.64	2,890,095.43
06/20/2025	Deposit			System-recorded deposit for QuickBooks Payments		480.00	2,890,575.43
06/20/2025	Expense		QuickBooks Payments	System-recorded fee for QuickBooks Payments. Fee-name: DiscountRateFee, fee-type: Daily.	Bank Charges & C/C Fees	-13.44	2,890,561.99
06/22/2025	Deposit		Louise Fischer	System-recorded deposit for QuickBooks Payments	Undeposited Funds	80.00	2,890,641.99
06/22/2025	Deposit		Naomi Kendall	System-recorded deposit for QuickBooks Payments	Undeposited Funds	120.00	2,890,761.99
06/22/2025	Expense		QuickBooks Payments	System-recorded fee for QuickBooks Payments. Fee-name: DiscountRateFee, fee-type: Daily.	Bank Charges & C/C Fees	-2.24	2,890,759.75
06/22/2025	Expense		QuickBooks Payments	System-recorded fee for QuickBooks Payments. Fee-name: DiscountRateFee, fee-type: Daily.	Bank Charges & C/C Fees	-3.36	2,890,756.39
06/23/2025	Deposit			System-recorded deposit for QuickBooks Payments		240.00	2,890,996.39
06/23/2025	Expense		QuickBooks Payments	System-recorded fee for QuickBooks Payments. Fee-name: DiscountRateFee, fee-type: Daily.	Bank Charges & C/C Fees	-6.72	2,890,989.67
06/24/2025	Deposit		Courtney Flynn	System-recorded deposit for QuickBooks Payments	Undeposited Funds	80.00	2,891,069.67
06/24/2025	Expense		QuickBooks Payments	System-recorded fee for QuickBooks Payments. Fee-name: DiscountRateFee, fee-type: Daily.	Bank Charges & C/C Fees	-2.24	2,891,067.43
06/25/2025	Deposit		john oliver	System-recorded deposit for QuickBooks Payments	Undeposited Funds	160.00	2,891,227.43
06/25/2025	Expense		QuickBooks Payments	System-recorded fee for QuickBooks Payments. Fee-name: DiscountRateFee, fee-type: Daily.	Bank Charges & C/C Fees	-1.60	2,891,225.83

06/25/2025	Bill Payment (Check)	11362791	Dept. Forestry & Fire Protectn		Accounts Payable	-13,531.25	2,877,694.58
06/26/2025	Deposit			System-recorded deposit for QuickBooks Payments		240.00	2,877,934.58
06/26/2025	Expense		QuickBooks Payments	System-recorded fee for QuickBooks Payments. Fee-name: DiscountRateFee, fee-type: Daily.	Bank Charges & C/C Fees	-6.72	2,877,927.86
06/27/2025	Journal Entry	Pay Period 26		RCD Payroll PP#26 period ending, June 13, 2025		-59,610.77	2,818,317.09
06/29/2025	Deposit		Shandon Schmeiske	System-recorded deposit for QuickBooks Payments	Undeposited Funds	120.00	2,818,437.09
06/29/2025	Expense		QuickBooks Payments	System-recorded fee for QuickBooks Payments. Fee-name: DiscountRateFee, fee-type: Daily.	Bank Charges & C/C Fees	-3.36	2,818,433.73
06/30/2025	Payment	204187	Placer County Water Agency - Donor		Accounts Receivable	1,820.00	2,820,253.73
06/30/2025	Deposit		CA Association of Resource Conservation Districts		Undeposited Funds	1,776.76	2,822,030.49
06/30/2025	Deposit					1,240.00	2,823,270.49
06/30/2025	Deposit		Wild Turkey Federation	C Craig - recipient of grant for the purchase of items to support Prescribed Burning	Unearned Revenue - Wild Turkey Federation	5,000.00	2,828,270.49
06/30/2025	Deposit		Special District Risk Management Authority	Refund for labor law poster	Office Supplies	5.00	2,828,275.49
06/30/2025	Journal Entry	'25		Legal fees June 2025		-596.75	2,827,678.74
06/30/2025	Journal Entry	Prop Taxes 6.30.25		To apportion the 2024/25 Teeter 5% Allocation		26,102.33	2,853,781.07
06/30/2025	Journal Entry	Prop Taxes 6.30.25		To apportion the 2024/25 Teeter 5% Allocation		528.66	2,854,309.73
06/30/2025	Journal Entry	Prop Taxes 6.30.25		To apportion the 2024/25 Teeter 5% Allocation		2,289.80	2,856,599.53
06/30/2025	Journal Entry	Prop Taxes 6.30.25		To apportion the 2024/25 Teeter 5% Allocation		90.32	2,856,689.85
06/30/2025	Journal Entry	Prop Taxes 6.30.25		To apportion the 2024/25 Teeter 5% Allocation		843.11	2,857,532.96
06/30/2025	Journal Entry	Prop Taxes 6.30.25		To apportion the 2024/25 Teeter 5% Allocation		-1,392.22	2,856,140.74
06/30/2025	Journal Entry	Prop Taxes 6.30.25		To apportion the 2024/25 Teeter 5% Allocation		0.30	2,856,141.04
06/30/2025	Journal Entry	Prop Taxes 6.30.25		To apportion the 2024/25 Teeter 5% Allocation		-8.67	2,856,132.37
06/30/2025	Journal Entry	June EMPEE Health		Employee w/holding for health insurance transferred held in PR withholding acct June 2025		4,301.34	2,860,433.71
06/30/2025	Journal Entry	Inc		June '25 Interest Income pending distribution to grants		9,402.89	2,869,836.60
06/30/2025	Journal Entry	Focus		June '25 Fuel		-1,629.93	2,868,206.67
						\$706,128.05	
TOTAL						\$706,128.05	



PLACER COUNTY RESOURCE CONSERVATION DISTRICT
PARS OPEB Trust Program

Account Report for the Period
6/1/2025 to 6/30/2025

Sarah Jones
Executive Director
Placer County Resource Conservation District
11641 Blocker Drive, Ste 120
Auburn, CA 95603

Account Summary							
Source	Beginning Balance as of 6/1/2025	Contributions	Earnings	Expenses	Distributions	Transfers	Ending Balance as of 6/30/2025
OPEB	\$244,699.21	\$0.00	\$8,137.45	\$118.25	\$0.00	\$0.00	\$252,718.41
Totals	\$244,699.21	\$0.00	\$8,137.45	\$118.25	\$0.00	\$0.00	\$252,718.41

Investment Selection	
Source	
OPEB	Balanced - Strategic Blend

Investment Objective	
Source	
OPEB	The dual goals of the Balanced Strategy are growth of principal and income. While dividend and interest income are an important component of the objective's total return, it is expected that capital appreciation will comprise a larger portion of the total return. The portfolio will be allocated between equity and fixed income investments.

Investment Return							
Source	1-Month	3-Months	1-Year	Annualized Return			Plan's Inception Date
				3-Years	5-Years	10-Years	
OPEB	3.33%	6.50%	10.75%	11.21%	8.62%	6.75%	4/3/2014

Information as provided by US Bank, Trustee for PARS; Not FDIC Insured; No Bank Guarantee; May Lose Value

Past performance does not guarantee future results. Performance returns may not reflect the deduction of applicable fees, which could reduce returns. Information is deemed reliable but may be subject to change.

Investment Return: Annualized rate of return is the return on an investment over a period other than one year multiplied or divided to give a comparable one-year return.

Account balances are inclusive of Trust Administration, Trustee and Investment Management fees

PLACER COUNTY RESOURCE CONSERVATION DISTRICT
PARS OPEB Trust Program

Account Report for the Period
7/1/2024 to 7/31/2024

Sarah Jones
Executive Director
Placer County Resource Conservation District
11641 Blocker Drive, Ste 120
Auburn, CA 95603

Account Summary

Source	Beginning Balance as of 7/1/2024	Contributions	Earnings	Expenses	Distributions	Transfers	Ending Balance as of 7/31/2024
OPEB	\$229,545.10	\$0.00	\$5,252.56	\$111.02	\$0.00	\$0.00	\$234,686.64
Totals	\$229,545.10	\$0.00	\$5,252.56	\$111.02	\$0.00	\$0.00	\$234,686.64

Investment Selection

Source	
OPEB	Balanced - Strategic Blend

Investment Objective

Source	
OPEB	The dual goals of the Balanced Strategy are growth of principal and income. While dividend and interest income are an important component of the objective's total return, it is expected that capital appreciation will comprise a larger portion of the total return. The portfolio will be allocated between equity and fixed income investments.

Investment Return

Source	1-Month	3-Months	1-Year	Annualized Return			Plan's Inception Date
				3-Years	5-Years	10-Years	
OPEB	2.29%	7.18%	13.53%	3.06%	7.44%	6.22%	4/3/2014

Information as provided by US Bank, Trustee for PARS: Not FDIC Insured; No Bank Guarantee; May Lose Value

Past performance does not guarantee future results. Performance returns may not reflect the deduction of applicable fees, which could reduce returns. Information is deemed reliable but may be subject to change.

Investment Return: Annualized rate of return is the return on an investment over a period other than one year multiplied or divided to give a comparable one-year return.

Account balances are inclusive of Trust Administration, Trustee and Investment Management fees

PLACER COUNTY RESOURCE CONSERVATION DISTRICT
PARS OPEB Trust Program

Account Report for the Period
7/1/2024 to 6/30/2025

Sarah Jones
Executive Director
Placer County Resource Conservation District
11641 Blocker Drive, Ste 120
Auburn, CA 95603

Account Summary

Source	Beginning Balance as of 7/1/2024	Contributions	Earnings	Expenses	Distributions	Transfers	Ending Balance as of 6/30/2025
OPEB	\$229,545.10	\$0.00	\$24,580.20	\$1,406.89	\$0.00	\$0.00	\$252,718.41
Totals	\$229,545.10	\$0.00	\$24,580.20	\$1,406.89	\$0.00	\$0.00	\$252,718.41

Investment Selection

Source	
OPEB	Balanced - Strategic Blend

Investment Objective

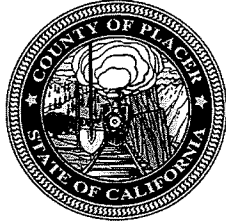
Source	
OPEB	The dual goals of the Balanced Strategy are growth of principal and income. While dividend and interest income are an important component of the objective's total return, it is expected that capital appreciation will comprise a larger portion of the total return. The portfolio will be allocated between equity and fixed income investments.

Investment Return

Source	1-Month	3-Months	1-Year	Annualized Return			Plan's Inception Date
				3-Years	5-Years	10-Years	
OPEB	3.33%	6.50%	10.75%	11.21%	8.62%	6.75%	4/3/2014

Information as provided by US Bank, Trustee for PARS; Not FDIC Insured; No Bank Guarantee; May Lose Value

Past performance does not guarantee future results. Performance returns may not reflect the deduction of applicable fees, which could reduce returns. Information is deemed reliable but may be subject to change.
Investment Return: Annualized rate of return is the return on an investment over a period other than one year multiplied or divided to give a comparable one-year return.
Account balances are inclusive of Trust Administration, Trustee and Investment Management fees



OFFICE OF TRISTAN BUTCHER
TREASURER-TAX COLLECTOR

COUNTY OF PLACER

TREASURER'S POOLED INVESTMENT REPORT

For the Month of June 30, 2025

2976 Richardson Drive, Auburn, CA 95603
Phone: (530) 889-4120 | Fax: (530) 889-4123
www.placer.ca.gov/tax

PREFACE

Placer County Treasurer's Pooled Investment Report

June 30, 2025

For the purpose of clarity, the following glossary of investment terms has been provided.

Book Value is the purchase price of a security plus amortization of any premium or discount. This may be more or less than face value, depending upon whether the security was purchased at a premium or at a discount.

Par Value is the principal amount of a security and the amount of principal that will be paid at maturity.

Market Value is the value at which a security can be sold at the time it is priced or the need to sell arises.

Market values are only relevant if the investment is sold prior to maturity. Profit or loss would be realized only if the specific investment were to be sold.

Government Code 53646 Compliance Report

The following information is a monthly update of funds on deposit in the Placer County Treasury pursuant to California Government code Section 53646. Further details of individual investments are included in the Treasurer's Monthly Investment Report. All investment transactions and decisions have been made with full compliance with California Government Code and Placer County's Statement of Investment Policy.

Individual securities are priced at the end of each month by Wells Fargo Bank.

The Weighted Average Maturity of the investments with the Treasury is 659 days.

The ability of the Placer County Treasury to meet its cash flow needs is demonstrated by \$446,177,112.31 in cash and investments maturing in the next 180 days.



**General Fund
Portfolio Management
Portfolio Summary
June 30, 2025**

Investments	Par Value	Market Value	Book Value	% of Portfolio	Term	Days to Maturity	YTM 360 Equiv.	YTM 365 Equiv.
LGIP	80,000,000.00	80,000,000.00	80,000,000.00	3.28	1	1	4.389	4.450
U.S. Treasury Coupons	895,000,000.00	887,332,813.00	883,365,619.22	36.26	1,036	500	3.979	4.034
mPower Placer - Long Term	2,949,796.07	2,565,395.08	2,952,234.80	0.12	7,339	4,080	4.061	4.117
Federal Agency Coupons	1,219,000,000.00	1,223,911,580.00	1,218,933,372.79	50.04	1,348	801	3.953	4.008
Collateralized Inactive Bank Deposits	5,000,000.00	5,000,000.00	5,000,000.00	0.21	1	1	4.213	4.272
Negotiable Certificates of Deposit	100,000,000.00	100,041,000.00	100,000,000.00	4.11	364	310	4.289	4.349
Collateralized CDs	23,000,000.00	23,000,000.00	23,000,000.00	0.94	366	217	4.147	4.204
Supranational	40,000,000.00	40,895,355.55	40,795,720.40	1.67	1,479	1,394	3.819	3.872
Commercial Paper Disc. -Amortizing	65,000,000.00	65,000,000.00	65,000,000.00	2.67	1	0	4.260	4.320
Local Agency Bond	8,966,958.34	8,623,192.57	8,966,958.34	0.37	7,250	4,677	2.961	3.002
mPower Placer	7,517,871.00	6,223,978.40	7,517,871.00	0.31	7,705	5,029	3.664	3.715
mPower - Folsom	377,103.36	332,927.09	377,103.36	0.02	7,684	4,203	3.446	3.494
Investments	2,446,811,728.77	2,442,926,241.69	2,435,908,879.91	100.00%	1,154	659	3.994	4.050
Cash								
Passbook/Checking (not included in yield calculations)	26,177,112.31	26,177,112.31	26,177,112.31		1	1	0.000	0.000
Total Cash and Investments	2,472,988,841.08	2,469,103,354.00	2,462,085,992.22		1,154	659	3.994	4.050

Total Earnings	June 30 Month Ending	Fiscal Year To Date	Fiscal Year Ending
Current Year	8,314,879.92	95,643,883.39	95,643,883.39
Average Daily Balance	2,511,666,763.60	2,433,482,634.74	
Effective Rate of Return	4.03%	3.93%	


JONATHAN SCHMIDT, ASST. TREASURER-TAX COLLECTOR

7/16/25

**General Fund
Portfolio Management
Portfolio Details - Investments
June 30, 2025**

Page 1

CUSIP	Investment #	Issuer	Average Balance	Purchase Date	Par Value	Market Value	Book Value	Stated Rate	YTM 365	Days to Maturity	Maturity Date
LGIP											
LGIP	22486	California Asset Mgm't Prog			20,000,000.00	20,000,000.00	20,000,000.00	4.450	4.450	1	
SYS23345	23345	CalITRUST			60,000,000.00	60,000,000.00	60,000,000.00	4.450	4.450	1	
Subtotal and Average			118,666,666.67		80,000,000.00	80,000,000.00	80,000,000.00		4.450	1	
U.S. Treasury Coupons											
91282CBH3	20549	U. S. TREASURY COUPON		03/10/2021	10,000,000.00	9,779,800.00	9,975,688.62	0.375	0.773	214	01/31/2026
91282CAJ0	20553	U. S. TREASURY COUPON		03/11/2021	10,000,000.00	9,929,900.00	9,992,944.02	0.250	0.680	61	08/31/2025
91282CAB7	20556	U. S. TREASURY COUPON		03/11/2021	10,000,000.00	9,966,200.00	9,996,683.47	0.250	0.660	30	07/31/2025
91282CBH3	20557	U. S. TREASURY COUPON		03/11/2021	10,000,000.00	9,779,800.00	9,976,797.71	0.375	0.753	214	01/31/2026
91282CBQ3	20558	U. S. TREASURY COUPON		03/11/2021	10,000,000.00	9,760,200.00	9,981,458.33	0.500	0.786	242	02/28/2026
91282CAM3	20590	U. S. TREASURY COUPON		04/07/2021	10,000,000.00	9,900,100.00	9,987,796.37	0.250	0.749	91	09/30/2025
91282CAB7	20601	U. S. TREASURY COUPON		04/09/2021	10,000,000.00	9,966,200.00	9,996,366.74	0.250	0.700	30	07/31/2025
91282CAB7	20612	U. S. TREASURY COUPON		04/15/2021	10,000,000.00	9,966,200.00	9,996,711.58	0.250	0.656	30	07/31/2025
91282CEY3	22473	U. S. TREASURY COUPON		04/21/2023	20,000,000.00	19,989,400.00	19,992,333.03	3.000	4.054	14	07/15/2025
9128282A7	22474	U. S. TREASURY COUPON		04/21/2023	20,000,000.00	19,463,200.00	19,519,002.68	1.500	3.799	410	08/15/2026
9128282R0	22475	U. S. TREASURY COUPON		04/21/2023	20,000,000.00	19,400,000.00	19,442,523.38	2.250	3.681	775	08/15/2027
9128283W8	22476	U. S. TREASURY COUPON		04/21/2023	10,000,000.00	9,762,100.00	9,786,423.73	2.750	3.644	959	02/15/2028
9128283W8	22593	U. S. TREASURY COUPON		06/29/2023	20,000,000.00	19,524,200.00	19,332,256.58	2.750	4.161	959	02/15/2028
91282CFE6	22609	U. S. TREASURY COUPON		07/06/2023	10,000,000.00	9,982,900.00	9,978,295.23	3.125	5.002	45	08/15/2025
91282CHH7	22612	U. S. TREASURY COUPON		07/10/2023	10,000,000.00	10,012,300.00	9,956,721.23	4.125	4.614	349	06/15/2026
91282CGL9	22613	U. S. TREASURY COUPON		07/10/2023	10,000,000.00	9,987,400.00	9,957,860.15	4.000	4.722	229	02/15/2026
91282CFE6	22615	U. S. TREASURY COUPON		07/10/2023	15,000,000.00	14,974,350.00	14,969,473.19	3.125	4.882	45	08/15/2025
91282CHU8	23055	U. S. TREASURY COUPON		08/28/2023	10,000,000.00	10,043,400.00	9,965,691.37	4.375	4.705	410	08/15/2026
91282CGE5	23116	U. S. TREASURY COUPON		10/16/2023	20,000,000.00	19,973,000.00	19,893,111.31	3.875	4.927	198	01/15/2026
91282CHM6	23117	U. S. TREASURY COUPON		10/16/2023	20,000,000.00	20,105,200.00	19,936,235.04	4.500	4.829	379	07/15/2026
912828X88	23118	U. S. TREASURY COUPON		10/16/2023	20,000,000.00	19,505,400.00	19,199,813.50	2.375	4.723	683	05/15/2027
9128284N7	23119	U. S. TREASURY COUPON		10/16/2023	20,000,000.00	19,554,000.00	19,094,743.72	2.875	4.642	1,049	05/15/2028
91282CGE5	23129	U. S. TREASURY COUPON		10/20/2023	10,000,000.00	9,986,500.00	9,936,082.67	3.875	5.137	198	01/15/2026
91282CHM6	23130	U. S. TREASURY COUPON		10/20/2023	10,000,000.00	10,052,600.00	9,944,871.43	4.500	5.073	379	07/15/2026
912828X88	23131	U. S. TREASURY COUPON		10/20/2023	15,000,000.00	14,629,050.00	14,329,219.83	2.375	5.014	683	05/15/2027
9128284N7	23132	U. S. TREASURY COUPON		10/20/2023	15,000,000.00	14,665,500.00	14,201,583.10	2.875	4.968	1,049	05/15/2028
91282CHM6	23150	U. S. TREASURY COUPON		11/06/2023	10,000,000.00	10,052,600.00	9,986,733.07	4.500	4.635	379	07/15/2026
91282CGE5	23151	U. S. TREASURY COUPON		11/06/2023	10,000,000.00	9,986,500.00	9,955,969.10	3.875	4.738	198	01/15/2026
91282CHB0	23152	U. S. TREASURY COUPON		11/06/2023	10,000,000.00	9,962,900.00	9,915,838.76	3.625	4.659	318	05/15/2026
9128284V9	23203	U. S. TREASURY COUPON		12/21/2023	20,000,000.00	19,507,800.00	19,408,177.60	2.875	3.920	1,141	08/15/2028
91282CHM6	23204	U. S. TREASURY COUPON		12/21/2023	40,000,000.00	40,210,400.00	40,131,456.78	4.500	4.162	379	07/15/2026

Data Updated: FUNDSNAP: 07/03/2025 11:53

Run Date: 07/03/2025 - 11:53

Portfolio PLCR

AC

PM (PRF_PM2) 7.3.11

Report Ver. 7.3.11

**General Fund
Portfolio Management
Portfolio Details - Investments
June 30, 2025**

Page 2

CUSIP	Investment #	Issuer	Average Balance	Purchase Date	Par Value	Market Value	Book Value	Stated Rate	YTM 365	Days to Maturity	Maturity Date
U.S. Treasury Coupons											
91282CHB0	23205	U. S. TREASURY COUPON		12/21/2023	10,000,000.00	9,962,900.00	9,954,623.29	3.625	4.176	318	05/15/2026
91282CGE5	23206	U. S. TREASURY COUPON		12/21/2023	20,000,000.00	19,973,000.00	19,957,440.48	3.875	4.289	198	01/15/2026
91282CEY3	23399	U. S. TREASURY COUPON		05/28/2024	50,000,000.00	49,973,500.00	49,961,069.92	3.000	5.111	14	07/15/2025
9128282R0	23433	U. S. TREASURY COUPON		07/09/2024	15,000,000.00	14,550,000.00	14,370,997.13	2.250	4.383	775	08/15/2027
9128282R0	23434	U. S. TREASURY COUPON		07/09/2024	20,000,000.00	19,400,000.00	19,165,608.44	2.250	4.372	775	08/15/2027
91282CHH7	24089	U. S. TREASURY COUPON		11/08/2024	20,000,000.00	20,024,600.00	19,982,258.67	4.125	4.220	349	06/15/2026
91282CHX2	24090	U. S. TREASURY COUPON		11/08/2024	10,000,000.00	10,197,300.00	10,059,740.93	4.375	4.167	1,157	08/31/2028
9128284V9	24091	U. S. TREASURY COUPON		11/08/2024	15,000,000.00	14,630,850.00	14,448,053.69	2.875	4.158	1,141	08/15/2028
91282CKS9	24092	U. S. TREASURY COUPON		11/08/2024	15,000,000.00	15,107,250.00	15,086,673.44	4.875	4.215	334	05/31/2026
912828P46	24115	U. S. TREASURY COUPON		12/06/2024	25,000,000.00	24,607,250.00	24,620,439.72	1.625	4.132	229	02/15/2026
91282CHB0	24116	U. S. TREASURY COUPON		12/06/2024	30,000,000.00	29,888,700.00	29,877,910.71	3.625	4.108	318	05/15/2026
91282CHM6	24117	U. S. TREASURY COUPON		12/06/2024	50,000,000.00	50,263,000.00	50,197,058.98	4.500	4.102	379	07/15/2026
91282CGE5	24118	U. S. TREASURY COUPON		12/06/2024	40,000,000.00	39,946,000.00	39,941,944.44	3.875	4.149	198	01/15/2026
91282CJA0	24127	U. S. TREASURY COUPON		12/18/2024	10,000,000.00	10,277,000.00	10,115,414.71	4.625	4.235	1,187	09/30/2028
9128284V9	24128	U. S. TREASURY COUPON		12/18/2024	30,000,000.00	29,261,700.00	28,833,031.79	2.875	4.230	1,141	08/15/2028
9128286B1	24168	U. S. TREASURY COUPON		01/28/2025	40,000,000.00	38,520,400.00	37,803,704.99	2.625	4.290	1,325	02/15/2029
91282CKD2	24209	U. S. TREASURY COUPON		03/05/2025	20,000,000.00	20,363,948.91	20,219,749.89	4.250	3.940	1,338	02/28/2029
9128286X3	24257	U. S. TREASURY COUPON		04/25/2025	15,000,000.00	14,740,950.00	14,757,933.29	2.125	3.942	334	05/31/2026
91282CHM6	24258	U. S. TREASURY COUPON		04/25/2025	15,000,000.00	15,265,364.09	15,273,101.39	4.500	3.921	379	07/15/2026
Subtotal and Average			902,054,405.53		895,000,000.00	887,332,813.00	883,365,619.22		4.034	500	
mPower Placer - Long Term											
2015NR-A	2015NR-A	mPower Placer		06/16/2015	808,023.77	702,528.19	808,023.77	4.000	3.999	3,715	09/02/2035
2015NR-BLT	2015NR-BLT	mPower Placer		09/02/2016	1,756,890.17	1,511,558.03	1,756,890.17	4.000	4.000	4,081	09/02/2036
72601FAC2	2018B	Public Finance Authority		06/28/2018	384,882.13	351,308.86	387,320.86	5.050	4.894	4,840	10/01/2038
Subtotal and Average			2,952,265.03		2,949,796.07	2,565,395.08	2,952,234.80		4.117	4,080	
Federal Agency Coupons											
3133EMYE6	20641	FEDERAL FARM CREDIT BANK		05/04/2021	10,000,000.00	9,741,900.00	9,998,316.67	1.000	1.021	307	05/04/2026
3133ERGR6	23409	FEDERAL FARM CREDIT BANK		06/05/2024	20,000,000.00	20,008,600.00	20,000,000.00	5.050	5.056	24	07/25/2025
3133ERGP0	23410	FEDERAL FARM CREDIT BANK		06/05/2024	20,000,000.00	20,002,200.00	20,000,000.00	5.060	5.064	6	07/07/2025
3133ERN72	24132	FEDERAL FARM CREDIT BANK		12/19/2024	20,000,000.00	20,186,200.00	20,000,000.00	4.220	4.221	931	01/18/2028
3133ER2R1	24171	FEDERAL FARM CREDIT BANK		01/29/2025	20,000,000.00	20,280,400.00	19,999,277.16	4.310	4.312	1,445	06/15/2029
3133ER2S9	24172	FEDERAL FARM CREDIT BANK		01/29/2025	15,000,000.00	15,210,750.00	14,999,322.02	4.310	4.312	1,452	06/22/2029
3133ER2Q3	24173	FEDERAL FARM CREDIT BANK		01/29/2025	15,000,000.00	15,209,700.00	14,999,458.24	4.310	4.312	1,435	06/05/2029
3133ER2P5	24174	FEDERAL FARM CREDIT BANK		01/29/2025	25,000,000.00	25,366,750.00	25,000,000.00	4.310	4.311	1,513	08/22/2029

Data Updated: FUNDSNAP: 07/03/2025 11:53

Run Date: 07/03/2025 - 11:53

Portfolio PLCR

AC

PM (PRF_PM2) 7.3.11

General Fund
Portfolio Management
Portfolio Details - Investments
June 30, 2025

Page 3

CUSIP	Investment #	Issuer	Average Balance	Purchase Date	Par Value	Market Value	Book Value	Stated Rate	YTM 365	Days to Maturity	Maturity Date
Federal Agency Coupons											
3133ER2M2	24175	FEDERAL FARM CREDIT BANK		01/29/2025	25,000,000.00	25,365,750.00	25,000,000.00	4.310	4.310	1,499	08/08/2029
3133ER2N0	24176	FEDERAL FARM CREDIT BANK		01/29/2025	25,000,000.00	25,366,250.00	25,000,000.00	4.310	4.311	1,506	08/15/2029
3133ER6S5	24213	FEDERAL FARM CREDIT BANK		03/06/2025	20,000,000.00	20,029,200.00	20,000,000.00	3.970	3.970	1,528	09/06/2029
3130AKWV4	20503	FEDERAL HOME LOAN BANK		02/01/2021	10,000,000.00	9,783,300.00	9,999,768.63	0.500	0.504	212	01/29/2026
3130ALCV4	20609	FEDERAL HOME LOAN BANK		04/14/2021	10,000,000.00	9,776,900.00	9,989,095.60	0.750	0.923	238	02/24/2026
3130ANJD3	21083	FEDERAL HOME LOAN BANK		08/26/2021	5,000,000.00	4,889,650.00	5,000,000.00	1.250	0.895	421	08/26/2026
3130ANRX0	21084	FEDERAL HOME LOAN BANK		08/26/2021	5,000,000.00	4,848,750.00	5,000,000.00	1.250	1.000	421	08/26/2026
3130ANVS6	21092	FEDERAL HOME LOAN BANK		08/30/2021	10,000,000.00	9,657,400.00	10,000,000.00	1.000	1.001	421	08/26/2026
3130ANW22	21093	FEDERAL HOME LOAN BANK		08/30/2021	5,000,000.00	4,890,450.00	5,000,000.00	0.850	0.850	239	02/25/2026
3130APUS2	21207	FEDERAL HOME LOAN BANK		11/22/2021	5,000,000.00	4,977,150.00	4,999,554.57	1.000	1.146	49	08/19/2025
3130APUN3	21215	FEDERAL HOME LOAN BANK		11/30/2021	4,000,000.00	3,873,680.00	4,000,000.00	1.250	1.250	423	08/28/2026
3130AQCT8	21256	FEDERAL HOME LOAN BANK		12/17/2021	5,000,000.00	4,860,150.00	5,000,000.00	1.330	1.468	381	07/17/2026
3130AVWF5	22491	FEDERAL HOME LOAN BANK		05/03/2023	10,000,000.00	9,981,300.00	10,000,000.00	3.680	3.661	366	07/02/2026
3130AVWE8	22492	FEDERAL HOME LOAN BANK		05/03/2023	10,000,000.00	9,999,900.00	10,000,000.00	4.000	3.961	1	07/02/2025
3130AVWA6	22493	FEDERAL HOME LOAN BANK		05/03/2023	20,000,000.00	19,984,600.00	20,000,000.00	3.725	3.726	731	07/02/2027
3130AVWC2	22494	FEDERAL HOME LOAN BANK		05/03/2023	10,000,000.00	9,967,500.00	10,000,000.00	3.615	3.616	916	01/03/2028
3130AW2U3	22511	FEDERAL HOME LOAN BANK		05/16/2023	10,000,000.00	9,969,100.00	10,000,000.00	3.620	3.621	595	02/16/2027
3130AW2V1	22512	FEDERAL HOME LOAN BANK		05/16/2023	10,000,000.00	9,970,100.00	10,000,000.00	3.625	3.626	587	02/08/2027
3130AW2W9	22513	FEDERAL HOME LOAN BANK		05/16/2023	10,000,000.00	9,971,800.00	10,000,000.00	3.635	3.636	580	02/01/2027
3130AW7B0	22527	FEDERAL HOME LOAN BANK		05/23/2023	10,000,000.00	10,009,300.00	10,000,000.00	3.925	3.926	442	09/16/2026
3130AW7C8	22528	FEDERAL HOME LOAN BANK		05/23/2023	10,000,000.00	10,009,000.00	10,000,000.00	3.920	3.921	449	09/23/2026
3130AW7A2	22529	FEDERAL HOME LOAN BANK		05/23/2023	10,000,000.00	10,009,400.00	10,000,000.00	3.930	3.932	430	09/04/2026
3130AW6Z8	22530	FEDERAL HOME LOAN BANK		05/23/2023	10,000,000.00	10,009,700.00	10,000,000.00	3.930	3.931	436	09/10/2026
3130AW6X31	22531	FEDERAL HOME LOAN BANK		05/23/2023	10,000,000.00	9,993,300.00	10,000,000.00	4.180	4.182	69	09/08/2025
3130AW6Y1	22532	FEDERAL HOME LOAN BANK		05/23/2023	10,000,000.00	9,993,700.00	10,000,000.00	4.180	4.182	63	09/02/2025
3130AWFA3	22559	FEDERAL HOME LOAN BANK		06/12/2023	10,000,000.00	10,057,900.00	10,000,000.00	4.060	4.061	799	09/08/2027
3130AWF96	22560	FEDERAL HOME LOAN BANK		06/12/2023	10,000,000.00	10,063,700.00	10,000,000.00	4.020	4.021	951	02/07/2028
3130AWFB1	22565	FEDERAL HOME LOAN BANK		06/13/2023	10,000,000.00	10,059,300.00	10,000,000.00	4.070	4.071	792	09/01/2027
3130AWFC9	22566	FEDERAL HOME LOAN BANK		06/13/2023	10,000,000.00	10,065,500.00	10,000,000.00	4.025	4.026	958	02/14/2028
3130AWLA6	22600	FEDERAL HOME LOAN BANK		07/06/2023	15,000,000.00	15,004,500.00	15,000,000.00	4.905	4.907	34	08/04/2025
3130AWLB4	22601	FEDERAL HOME LOAN BANK		07/06/2023	10,000,000.00	10,003,900.00	10,000,000.00	4.895	4.897	41	08/11/2025
3130AWL57	22602	FEDERAL HOME LOAN BANK		07/06/2023	20,000,000.00	20,182,400.00	20,000,000.00	4.460	4.461	591	02/12/2027
3130AWL73	22603	FEDERAL HOME LOAN BANK		07/06/2023	10,000,000.00	10,091,900.00	10,000,000.00	4.450	4.451	604	02/25/2027
3130AWL81	22604	FEDERAL HOME LOAN BANK		07/06/2023	10,000,000.00	10,126,300.00	10,000,000.00	4.275	4.276	951	02/07/2028
3130AWL65	22605	FEDERAL HOME LOAN BANK		07/06/2023	20,000,000.00	20,182,800.00	20,000,000.00	4.450	4.451	601	02/22/2027
3130AWL99	22606	FEDERAL HOME LOAN BANK		07/06/2023	20,000,000.00	20,254,400.00	20,000,000.00	4.270	4.271	966	02/22/2028

Data Updated: FUNDSNAP: 07/03/2025 11:53

Run Date: 07/03/2025 - 11:53

Portfolio PLCR
AC
PM (PRF_PM2) 7.3.11

General Fund
Portfolio Management
Portfolio Details - Investments
June 30, 2025

Page 4

CUSIP	Investment #	Issuer	Average Balance	Purchase Date	Par Value	Market Value	Book Value	Stated Rate	YTM 365	Days to Maturity	Maturity Date
Federal Agency Coupons											
3130AWMN7	23031	FEDERAL HOME LOAN BANK		08/16/2023	20,000,000.00	20,367,000.00	19,971,135.46	4.375	4.430	1,074	06/09/2028
3130AWWZ9	23032	FEDERAL HOME LOAN BANK		08/16/2023	10,000,000.00	10,121,700.00	10,000,000.00	4.500	4.502	714	06/15/2027
3130AWX21	23033	FEDERAL HOME LOAN BANK		08/16/2023	10,000,000.00	10,139,800.00	10,000,000.00	4.480	4.480	770	08/10/2027
3130AWX62	23034	FEDERAL HOME LOAN BANK		08/16/2023	10,000,000.00	10,136,900.00	10,000,000.00	4.470	4.470	765	08/05/2027
3130AWX54	23035	FEDERAL HOME LOAN BANK		08/16/2023	10,000,000.00	10,129,200.00	10,000,000.00	4.495	4.497	709	06/10/2027
3130AYBH8	23209	FEDERAL HOME LOAN BANK		12/22/2023	20,000,000.00	20,000,400.00	20,000,000.00	4.460	6.378	9	07/10/2025
3130AYBK1	23210	FEDERAL HOME LOAN BANK		12/22/2023	15,000,000.00	15,058,500.00	15,000,000.00	3.855	3.855	1,105	07/10/2028
3130AYBJ4	23211	FEDERAL HOME LOAN BANK		12/22/2023	15,000,000.00	15,027,600.00	15,000,000.00	4.000	4.001	559	01/11/2027
3130AYGV2	23232	FEDERAL HOME LOAN BANK		01/11/2024	10,000,000.00	10,028,600.00	10,000,000.00	4.193	4.194	400	08/05/2026
3130AYGR1	23233	FEDERAL HOME LOAN BANK		01/11/2024	15,000,000.00	15,041,700.00	15,000,000.00	4.180	4.181	407	08/12/2026
3130AYGU4	23234	FEDERAL HOME LOAN BANK		01/11/2024	20,000,000.00	20,068,200.00	20,000,000.00	4.110	4.110	553	01/05/2027
3130AYGW0	23235	FEDERAL HOME LOAN BANK		01/11/2024	20,000,000.00	20,093,000.00	20,000,000.00	3.985	3.985	1,287	01/08/2029
3130AYGT7	23236	FEDERAL HOME LOAN BANK		01/11/2024	20,000,000.00	20,123,400.00	20,000,000.00	4.020	4.020	924	01/11/2028
3130AYGP5	23237	FEDERAL HOME LOAN BANK		01/11/2024	20,000,000.00	20,102,000.00	20,000,000.00	4.050	4.050	736	07/07/2027
3130AYGQ3	23238	FEDERAL HOME LOAN BANK		01/11/2024	20,000,000.00	20,148,200.00	20,000,000.00	3.980	3.980	1,100	07/05/2028
3130AYQF6	23260	FEDERAL HOME LOAN BANK		01/29/2024	30,000,000.00	30,159,900.00	30,000,000.00	4.060	4.061	741	07/12/2027
3130AYQE9	23261	FEDERAL HOME LOAN BANK		01/29/2024	15,000,000.00	15,073,050.00	15,000,000.00	4.070	4.071	700	06/01/2027
3130AYQB5	23262	FEDERAL HOME LOAN BANK		01/29/2024	20,000,000.00	20,109,800.00	20,000,000.00	4.040	4.040	1,305	01/26/2029
3130AYQ90	23263	FEDERAL HOME LOAN BANK		01/29/2024	20,000,000.00	20,187,000.00	20,000,000.00	4.057	4.058	1,098	07/03/2028
3130AYQA7	23264	FEDERAL HOME LOAN BANK		01/29/2024	20,000,000.00	20,171,200.00	20,000,000.00	4.062	4.063	1,066	06/01/2028
3130AYQD1	23265	FEDERAL HOME LOAN BANK		01/29/2024	20,000,000.00	20,104,000.00	20,000,000.00	4.060	4.061	804	09/13/2027
3130AYQC3	23266	FEDERAL HOME LOAN BANK		01/29/2024	15,000,000.00	15,078,750.00	15,000,000.00	4.070	4.071	720	06/21/2027
3130B0YB9	23366	FEDERAL HOME LOAN BANK		04/17/2024	25,000,000.00	25,004,500.00	25,000,000.00	5.120	5.127	9	07/10/2025
3130B0YC7	23367	FEDERAL HOME LOAN BANK		04/17/2024	25,000,000.00	25,009,750.00	25,000,000.00	5.110	5.117	20	07/21/2025
3130B1NB9	23408	FEDERAL HOME LOAN BANK		06/05/2024	20,000,000.00	20,006,000.00	20,000,000.00	5.040	5.040	17	07/18/2025
3130B1NC7	23411	FEDERAL HOME LOAN BANK		06/05/2024	15,000,000.00	15,113,700.00	15,000,000.00	4.710	4.713	388	07/24/2026
3130B1XB8	23436	FEDERAL HOME LOAN BANK		07/10/2024	10,000,000.00	10,154,200.00	10,000,000.00	4.300	4.301	1,080	06/15/2028
3130B4CD1	24129	FEDERAL HOME LOAN BANK		12/19/2024	30,000,000.00	30,348,600.00	30,000,000.00	4.110	4.112	1,172	09/15/2028
3130B4CE94	24130	FEDERAL HOME LOAN BANK		12/19/2024	20,000,000.00	20,107,200.00	20,000,000.00	4.080	4.081	1,543	09/21/2029
3130B4CF6	24131	FEDERAL HOME LOAN BANK		12/19/2024	20,000,000.00	20,100,200.00	20,000,000.00	4.080	4.081	1,480	07/20/2029
3130B4LH2	24149	FEDERAL HOME LOAN BANK		01/13/2025	20,000,000.00	20,323,000.00	20,000,000.00	4.370	4.370	1,289	01/10/2029
3130B5GJ1	24212	FEDERAL HOME LOAN BANK		03/06/2025	20,000,000.00	20,113,200.00	20,000,000.00	3.980	3.980	1,528	09/06/2029
3130B5U48	24238	FEDERAL HOME LOAN BANK		04/07/2025	20,000,000.00	19,938,600.00	20,000,000.00	3.750	3.751	1,479	07/19/2029
3130B5W87	24247	FEDERAL HOME LOAN BANK		04/14/2025	15,000,000.00	15,016,050.00	15,000,000.00	3.875	3.876	1,290	01/11/2029
3130B6QL3	24297	FEDERAL HOME LOAN BANK		06/11/2025	10,000,000.00	10,114,200.00	10,000,000.00	4.050	4.051	1,668	01/24/2030
3130B6QM1	24298	FEDERAL HOME LOAN BANK		06/11/2025	10,000,000.00	10,114,200.00	10,000,000.00	4.050	4.051	1,669	01/25/2030

Data Updated: FUNDSNAP: 07/03/2025 11:53

Run Date: 07/03/2025 - 11:53

Portfolio PLCR
AC
PM (PRF_PM2) 7.3.11

**General Fund
Portfolio Management
Portfolio Details - Investments
June 30, 2025**

Page 5

CUSIP	Investment #	Issuer	Average Balance	Purchase Date	Par Value	Market Value	Book Value	Stated Rate	YTM 365	Days to Maturity	Maturity Date
Federal Agency Coupons											
3137EAEX3	20417	FED HOME LOAN MORT CORP		12/15/2020	10,000,000.00	9,908,900.00	9,998,988.13	0.375	0.419	84	09/23/2025
3134GXHY3	21206	FED HOME LOAN MORT CORP		11/22/2021	5,000,000.00	4,844,250.00	4,979,127.32	0.750	1.190	357	06/23/2026
3135G05X7	20421	FEDERAL NATIONAL MORT. ASSOC.		12/15/2020	10,000,000.00	9,938,700.00	9,999,328.99	0.375	0.420	55	08/25/2025
Subtotal and Average			1,220,597,495.31		1,219,000,000.00	1,223,911,580.00	1,218,933,372.79		4.008	801	
Collateralized Inactive Bank Deposits											
SYS19055	19055	Five Star Bank - PIMMA			5,000,000.00	5,000,000.00	5,000,000.00	4.272	4.272	1	
Subtotal and Average			5,000,000.00		5,000,000.00	5,000,000.00	5,000,000.00		4.272	1	
Negotiable Certificates of Deposit											
22536JQW8	24295	Credit Agricole CIB NY		06/10/2025	10,000,000.00	10,014,500.00	10,000,000.00	4.350	4.410	374	07/10/2026
53947B3X6	24296	Lloyds Bank Corp Mkts NY		06/10/2025	25,000,000.00	25,043,250.00	25,000,000.00	4.380	4.441	374	07/10/2026
89115DZT6	24244	TORONTO DOMINION BANK NY		04/11/2025	15,000,000.00	14,992,350.00	15,000,000.00	4.280	4.339	195	01/12/2026
89115DZX7	24245	TORONTO DOMINION BANK NY		04/11/2025	10,000,000.00	9,993,100.00	10,000,000.00	4.230	4.289	227	02/13/2026
89115DA48	24260	TORONTO DOMINION BANK NY		04/25/2025	20,000,000.00	19,997,600.00	20,000,000.00	4.220	4.279	325	05/22/2026
89115D7L4	24261	TORONTO DOMINION BANK NY		04/25/2025	20,000,000.00	20,000,200.00	20,000,000.00	4.250	4.309	311	05/08/2026
Subtotal and Average			89,500,000.00		100,000,000.00	100,041,000.00	100,000,000.00		4.349	310	
Collateralized CDs											
SYS24153	24153	Five Star Bank - CD		01/06/2025	10,000,000.00	10,000,000.00	10,000,000.00	4.150	4.208	189	01/06/2026
SYS24185	24185	Five Star Bank - CD		02/07/2025	10,000,000.00	10,000,000.00	10,000,000.00	4.190	4.248	223	02/09/2026
SYS24254	24254	River City Bank		04/19/2025	3,000,000.00	3,000,000.00	3,000,000.00	3.990	4.045	292	04/19/2026
Subtotal and Average			23,000,000.00		23,000,000.00	23,000,000.00	23,000,000.00		4.204	217	
Supranational											
45950KDHO	24236	International Finance Corp		04/04/2025	20,000,000.00	20,547,822.22	20,568,343.37	4.250	3.770	1,462	07/02/2029
4581X0EN4	24243	INTER-AMERICAN DEVELOPMENT BNK		04/11/2025	20,000,000.00	20,347,533.33	20,227,377.03	4.125	3.975	1,325	02/15/2029
Subtotal and Average			40,800,354.87		40,000,000.00	40,895,355.55	40,795,720.40		3.872	1,394	
Commercial Paper Disc. -Amortizing											
22533TU12	24311	Credit Agricole CIB		06/30/2025	65,000,000.00	65,000,000.00	65,000,000.00	4.260	4.320	0	07/01/2025
Subtotal and Average			77,663,353.33		65,000,000.00	65,000,000.00	65,000,000.00		4.320	0	

**General Fund
Portfolio Management
Portfolio Details - Investments
June 30, 2025**

Page 6

CUSIP	Investment #	Issuer	Average Balance	Purchase Date	Par Value	Market Value	Book Value	Stated Rate	YTM 365	Days to Maturity	Maturity Date
Local Agency Bond											
SYS16098	16098	Ackerman School District		04/03/2017	4,655,686.80	4,587,294.76	4,655,686.80	2.800	2.800	4,294	04/03/2037
SYS17042	17042	Mid Placer Public School Trans		12/21/2017	107,761.94	107,168.17	107,761.94	2.850	2.850	903	12/21/2027
SYS18093	18093	Mid Placer Public School Trans		01/16/2019	424,783.34	418,602.74	424,783.34	3.000	3.000	1,295	01/16/2029
16115	16115	Newcastle Elementary SD		06/30/2017	2,426,371.83	2,157,772.47	2,426,371.83	2.800	2.800	8,034	06/30/2047
SYS23342	23342	Placer Hills Fire Protection		04/03/2024	599,876.73	599,876.73	599,876.73	4.170	4.170	1,372	04/03/2029
SYS23287	23287	Placer CEO Fire		02/01/2024	752,477.70	752,477.70	752,477.70	4.000	4.000	1,311	02/01/2029
Subtotal and Average			9,019,113.36		8,966,958.34	8,623,192.57	8,966,958.34		3.002	4,677	
mPower Placer											
2016NR-A	2016NR-A	mPower Placer		08/04/2016	2,930,646.45	2,330,713.82	2,930,646.45	3.000	3.042	4,446	09/02/2037
2017 NR	2017 NR	mPower Placer		07/06/2017	19,582.25	15,378.72	19,582.25	3.000	3.042	4,811	09/02/2038
2017 R	2017 R	mPower Placer		07/06/2017	22,503.93	17,673.24	22,503.93	3.000	3.042	4,811	09/02/2038
2018 NR	2018 NR	mPower Placer		07/26/2018	39,242.38	29,416.87	39,242.38	4.500	4.563	5,176	09/02/2039
2018 R	2018 R	mPower Placer		07/12/2018	97,469.43	84,993.34	97,469.43	4.500	4.563	5,176	09/02/2039
2018 S-NR	18003	Pioneer Community Energy		08/09/2018	260,621.29	231,145.02	260,621.29	4.500	4.563	5,176	09/02/2039
2017 S NR	2017 S-NR	Pioneer Community Energy		09/28/2017	112,093.72	85,135.18	112,093.72	3.000	3.042	4,811	09/02/2038
2017 S-R	2017 S-R	Pioneer Community Energy		07/06/2017	1,055,431.49	834,329.15	1,055,431.49	3.000	3.042	4,811	09/02/2038
2018 S-R	2018 S-R	Pioneer Community Energy		07/12/2018	875,820.78	769,522.41	875,820.78	4.500	4.563	5,176	09/02/2039
2019-20 R-1	2019-20 R-1	Pioneer Community Energy		07/11/2019	679,143.40	590,148.45	679,143.40	4.500	4.563	5,542	09/02/2040
2020-21 R1	2020-21 R1	Pioneer Community Energy		07/23/2020	657,113.95	568,738.69	657,113.95	4.500	4.563	5,907	09/02/2041
2021-22 R1	2021-22 R1	Pioneer Community Energy		08/26/2021	717,919.50	626,040.16	717,919.50	4.500	4.563	6,272	09/02/2042
2016S R-1	2016S R-1	Sierra Valley Energy Authority		01/26/2017	50,282.43	40,743.35	50,282.43	3.000	3.042	4,446	09/02/2037
Subtotal and Average			7,517,871.00		7,517,871.00	6,223,978.40	7,517,871.00		3.715	5,029	
mPower - Folsom											
2016-IA3 #2	2016-IA3 #2	mPower Folsom		07/14/2016	71,623.85	62,835.60	71,623.85	3.500	3.549	4,446	09/02/2037
2017-IA3 #3	2017-IA3 #3	mPower Folsom		07/27/2017	27,253.69	23,005.38	27,253.69	2.750	2.788	4,811	09/02/2038
MFIA-3	MFIA-3	mPower Folsom		09/01/2015	179,632.42	158,768.11	179,632.42	3.500	3.549	4,081	09/02/2036
MF R-1	MFR-1	mPower Folsom		09/01/2015	98,593.40	88,318.00	98,593.40	3.500	3.549	4,081	09/02/2036
Subtotal and Average			377,103.36		377,103.36	332,927.09	377,103.36		3.494	4,203	

**General Fund
Portfolio Management
Portfolio Details - Investments
June 30, 2025**

Page 7

CUSIP	Investment #	Issuer	Average Balance	Purchase Date	Par Value	Market Value	Book Value	Stated Rate	YTM 365	Days to Maturity
Total and Average			2,511,666,763.60		2,446,811,728.77	2,442,926,241.69	2,435,908,879.91		4.050	659

**General Fund
Portfolio Management
Portfolio Details - Cash
June 30, 2025**

CUSIP	Investment #	Issuer	Average Balance	Purchase Date	Par Value	Market Value	Book Value	Stated Rate	YTM 365	Days to Maturity
Cash at Bank										
SYS00000	00000	PLACER COUNTY CASH			25,181,286.00	25,181,286.00	25,181,286.00		0.000	1
Undeposited Receipts										
SYS00000VAULT	00000VAULT	PLACER COUNTY CASH			995,826.31	995,826.31	995,826.31		0.000	1
Average Balance			0.00							1
Total Cash and Investments			2,511,666,763.60		2,472,988,841.08	2,469,103,354.00	2,462,085,992.22		4.050	659



**General Fund
Purchases Report
Sorted by Fund - Fund
June 1, 2025 - June 30, 2025**

CUSIP	Investment #	Fund	Sec. Type	Issuer	Original Par Value	Purchase Date	Payment	Principal Purchase	Accrued at Purchase	Rate at Purchas	Maturity Date	YTM	Ending Book Value
General Fund													
63873JT34	24288	1010	ACP	NATXNY	140,000,000.00	06/02/2025	06/03 - At Maturity	139,983,433.33		4.260	06/03/2025	4.260	0.00
63873JT42	24289	1010	ACP	NATXNY	140,000,000.00	06/03/2025	06/04 - At Maturity	139,983,433.33		4.260	06/04/2025	4.260	0.00
63873JT59	24290	1010	ACP	NATXNY	140,000,000.00	06/04/2025	06/05 - At Maturity	139,983,433.33		4.260	06/05/2025	4.260	0.00
63873JT67	24291	1010	ACP	NATXNY	135,000,000.00	06/05/2025	06/06 - At Maturity	134,984,024.99		4.260	06/06/2025	4.260	0.00
63873JT91	24292	1010	ACP	NATXNY	120,000,000.00	06/06/2025	06/09 - At Maturity	119,957,400.00		4.260	06/09/2025	4.262	0.00
63873JTA8	24293	1010	ACP	NATXNY	125,000,000.00	06/09/2025	06/10 - At Maturity	124,985,208.33		4.260	06/10/2025	4.260	0.00
22536JQW8	24295	1010	NCB	CANYCD	10,000,000.00	06/10/2025	07/10 - At Maturity	10,000,000.00		4.350	07/10/2026	4.350	10,000,000.00
53947B3X6	24296	1010	NCB	LBCMNY	25,000,000.00	06/10/2025	07/10 - At Maturity	25,000,000.00		4.380	07/10/2026	4.380	25,000,000.00
63873JTB6	24294	1010	ACP	NATXNY	85,000,000.00	06/10/2025	06/11 - At Maturity	84,989,941.66		4.260	06/11/2025	4.260	0.00
3130B6QL3	24297	1010	FAC	FHLB	10,000,000.00	06/11/2025	07/24 - 01/24	10,000,000.00		4.050	01/24/2030	4.051	10,000,000.00
3130B6QM1	24298	1010	FAC	FHLB	10,000,000.00	06/11/2025	07/25 - 01/25	10,000,000.00		4.050	01/25/2030	4.051	10,000,000.00
63873JTC4	24299	1010	ACP	NATXNY	60,000,000.00	06/11/2025	06/12 - At Maturity	59,992,900.00		4.260	06/12/2025	4.260	0.00
63873JTD2	24300	1010	ACP	NATXNY	55,000,000.00	06/12/2025	06/13 - At Maturity	54,993,491.66		4.260	06/13/2025	4.260	0.00
63873JTG5	24301	1010	ACP	NATXNY	30,000,000.00	06/13/2025	06/16 - At Maturity	29,989,350.00		4.260	06/16/2025	4.262	0.00
63873JTH3	24302	1010	ACP	NATXNY	50,000,000.00	06/16/2025	06/17 - At Maturity	49,994,083.33		4.260	06/17/2025	4.260	0.00
63873JTI9	24303	1010	ACP	NATXNY	55,000,000.00	06/17/2025	06/18 - At Maturity	54,993,491.66		4.260	06/18/2025	4.260	0.00
63873JTL4	24304	1010	ACP	NATXNY	45,000,000.00	06/18/2025	06/20 - At Maturity	44,989,350.00		4.260	06/20/2025	4.261	0.00
63873JTP5	24305	1010	ACP	NATXNY	50,000,000.00	06/20/2025	06/23 - At Maturity	49,982,250.00		4.260	06/23/2025	4.262	0.00
63873JTQ3	24306	1010	ACP	NATXNY	55,000,000.00	06/23/2025	06/24 - At Maturity	54,993,491.66		4.260	06/24/2025	4.260	0.00
63873JTR1	24307	1010	ACP	NATXNY	75,000,000.00	06/24/2025	06/25 - At Maturity	74,991,125.00		4.260	06/25/2025	4.260	0.00
63873JTS9	24308	1010	ACP	NATXNY	85,000,000.00	06/25/2025	06/26 - At Maturity	84,989,941.66		4.260	06/26/2025	4.260	0.00
63873JTT7	24309	1010	ACP	NATXNY	65,000,000.00	06/26/2025	06/27 - At Maturity	64,992,308.33		4.260	06/27/2025	4.260	0.00
63873JTW0	24310	1010	ACP	NATXNY	65,000,000.00	06/27/2025	06/30 - At Maturity	64,976,925.00		4.260	06/30/2025	4.262	0.00
22533TU12	24311	1010	ACP	CACPNY	65,000,000.00	06/30/2025	07/01 - At Maturity	64,992,308.33		4.260	07/01/2025	4.260	65,000,000.00
Subtotal					1,695,000,000.00			1,694,737,891.60	0.00				120,000,000.00
Total Purchases					1,695,000,000.00			1,694,737,891.60	0.00				120,000,000.00



PLACER COUNTY 2024/25
Summary by Issuer
June 30, 2025

Issuer	Number of Investments	Par Value	Remaining Cost	% of Portfolio	Average YTM 365	Average Days to Maturity
Ackerman School District	1	4,655,686.80	4,655,686.80	0.19	2.800	4,294
Credit Agricole CIB	1	65,000,000.00	64,992,308.33	2.65	4.320	0
California Asset Mgm't Prog	1	20,000,000.00	20,000,000.00	0.82	4.450	1
Credit Agricole CIB NY	1	10,000,000.00	10,000,000.00	0.41	4.410	374
CalTRUST	1	60,000,000.00	60,000,000.00	2.45	4.450	1
FEDERAL FARM CREDIT BANK	11	215,000,000.00	214,987,850.00	8.78	4.257	1,107
FEDERAL HOME LOAN BANK	69	979,000,000.00	978,856,320.00	39.96	4.041	752
FED HOME LOAN MORT CORP	2	15,000,000.00	14,880,900.00	0.61	0.676	175
FEDERAL NATIONAL MORT. ASSOC.	1	10,000,000.00	9,979,000.00	0.41	0.420	55
Five Star Bank - PIMMA	1	5,000,000.00	5,000,000.00	0.20	4.272	1
Five Star Bank - CD	2	20,000,000.00	20,000,000.00	0.82	4.228	206
International Finance Corp	1	20,000,000.00	20,372,320.00	0.83	3.770	1,462
INTER-AMERICAN DEVELOPMENT BNK	1	20,000,000.00	20,105,120.00	0.82	3.975	1,325
Lloyds Bank Corp Mkts NY	1	25,000,000.00	25,000,000.00	1.02	4.441	374
Mid Placer Public School Trans	2	532,545.28	532,545.28	0.02	2.970	1,216
mPower Folsom	4	377,103.36	377,103.36	0.02	3.494	4,203
mPower Placer	7	5,674,358.38	5,674,358.38	0.23	3.511	4,249
Newcastle Elementary SD	1	2,426,371.83	2,426,371.83	0.10	2.800	8,034
Placer Hills Fire Protection	1	599,876.73	599,876.73	0.02	4.170	1,372
Public Finance Authority	1	384,882.13	392,579.77	0.02	4.894	4,840
Pioneer Community Energy	7	4,358,144.13	4,358,144.13	0.18	4.155	5,426
PLACER COUNTY CASH	2	26,177,112.31	26,177,112.31	1.07	0.000	1
Placer CEO Fire	1	752,477.70	752,477.70	0.03	4.000	1,311

PLACER COUNTY 2024/25
Summary by Issuer
June 30, 2025

37

Page 2

Issuer	Number of Investments	Par Value	Remaining Cost	% of Portfolio	Average YTM 365	Average Days to Maturity
River City Bank	1	3,000,000.00	3,000,000.00	0.12	4.045	292
Sierra Valley Energy Authority	1	50,282.43	50,282.43	0.00	3.042	4,446
TORONTO DOMINION BANK NY	4	65,000,000.00	65,000,000.00	2.65	4.304	276
U. S. TREASURY COUPON	50	895,000,000.00	871,659,169.83	35.58	4.034	500
Total and Average	176	2,472,988,841.08	2,449,829,526.88	100.00	4.007	652

Notice of Exemption**Appendix E**

To: Office of Planning and Research
P.O. Box 3044, Room 113
Sacramento, CA 95812-3044

County Clerk

County of: Placer

From: (Public Agency): Placer County Resource Conservation District
11641 Blocker Drive, Suite 120
Auburn CA 95603

(Address)

Project Title: Prescribed Burning on Private Lands (PBPL) - Auburn Shaded Fuel Break Rx Burning

Project Applicant: Placer County Resource Conservation District

Project Location - Specific:

T12N R08E Section 2 MDBM; Auburn USGS 7.5' Quad

Project Location - City: Auburn

Project Location - County: Placer

Description of Nature, Purpose and Beneficiaries of Project:

The Prescribed Burning on Private Lands (PBPL) Program is funded by CAL FIRE to increase the pace and scale of prescribed burning throughout the state to improve fire resilience and forest/community health. Placer RCD is working with Placer County landowners to conduct small scale, low-complexity prescribed burns. The project will serve as an opportunity to equip private landowners with the knowledge and skills to use prescribed burning as a fuels management tool, decrease fuel continuity, and reduce the probability of catastrophic wildfire. In addition, this prescribed burn serves as a tool to maintain low fuel loading on the footprint of the Auburn Shaded Fuel Break. The proposed project benefits private landowners, suppression resources, and the ecological integrity of the state's forestlands.

Name of Public Agency Approving Project: Placer County Resource Conservation District

Name of Person or Agency Carrying Out Project: Placer County Resource Conservation District

Exempt Status: (check one):

- ☐ Ministerial (Sec. 21080(b)(1); 15268);
- ☐ Declared Emergency (Sec. 21080(b)(3); 15269(a));
- ☐ Emergency Project (Sec. 21080(b)(4); 15269(b)(c));
- ☒ Categorical Exemption. State type and section number: Class 4: Minor Alterations to Land (CCR title 14, Section 15304)
- ☐ Statutory Exemptions. State code number: _____

Reasons why project is exempt:

Placer RCD is proposing the qualification of exemption from a comprehensive CEQA analysis under the Class 4 category for minor alterations to land. The project involves a low-intensity prescribed underburn less than 10 acres to improve community fire resiliency, reduce risks to first responders during a wildfire, and preserve the ecological integrity of the property when a wildfire ignites. The planned burn will target carrier fuels like needlecast and leaf litter for fuels reduction. The burn is small in size and low in complexity. The burn will be conducted in a manner that does not release large amounts of smoke. The burn plan will identify hazard mitigation tactics and ensure the conservation of ecological and cultural resources. Under the specified prescription, the burn will have low velocity and minimal heat, resulting in the combustion of fine fuels only and not threatening the forest ecosystem. All necessary permits will be obtained by the landowner. The proposed project will not result in the taking of endangered, rare, or threatened plant or animal species or result in significant erosion and sedimentation of surface waters. Containment lines may include water bars if built on steep slopes to prevent sediment deposition or erosion.

Lead Agency

Contact Person: Cordi Craig

Area Code/Telephone/Extension: 530-390-6680

If filed by applicant:

1. Attach certified document of exemption finding.
2. Has a Notice of Exemption been filed by the public agency approving the project? **Yes** **No**

Signature: _____ **Date:** _____ **Title:** _____

Signed by Lead Agency Signed by Applicant

Authority cited: Sections 21083 and 21110, Public Resources Code.
Reference: Sections 21108, 21152, and 21152.1, Public Resources Code.

Date Received for filing at OPR: _____



Auburn Shaded Fuel Break Joint Landowner Rx Burn

39



Notice of Exemption**Appendix E**

To: Office of Planning and Research
P.O. Box 3044, Room 113
Sacramento, CA 95812-3044

County Clerk

County of: Placer

From: (Public Agency): Placer County Resource Conservation District
11641 Blocker Drive, Suite 120
Auburn CA 95603

(Address)

Project Title: Prescribed Burning on Private Lands - Weimar, Ellinwood

Project Applicant: Placer County Resource Conservation District

Project Location - Specific:

T14N R09E Sections 28, 33 MDBM; Colfax USGS 7.5' Quad

Project Location - City: Colfax

Project Location - County: Placer

Description of Nature, Purpose and Beneficiaries of Project:

The Prescribed Burning on Private Lands (PBPL) Program is funded by CAL FIRE to increase the pace and scale of prescribed burning throughout the state to improve fire resilience and forest/community health. Placer RCD is working with Placer County landowners to conduct small scale, low-complexity prescribed burns. The project will serve as an opportunity to equip private landowners with the knowledge and skills to use prescribed burning as a fuels management tool, decrease fuel continuity, and reduce the probability of catastrophic wildfire. The proposed project benefits private landowners, suppression resources, and the ecological integrity of the state's forestlands.

Name of Public Agency Approving Project: Placer County Resource Conservation District

Name of Person or Agency Carrying Out Project: Placer County Resource Conservation District

Exempt Status: (check one):

- ☐ Ministerial (Sec. 21080(b)(1); 15268);
- ☐ Declared Emergency (Sec. 21080(b)(3); 15269(a));
- ☐ Emergency Project (Sec. 21080(b)(4); 15269(b)(c));
- ☒ Categorical Exemption. State type and section number: Class 4: Minor Alterations to Land (CCR title 14, Section 15304)
- ☐ Statutory Exemptions. State code number: _____

Reasons why project is exempt:

Placer RCD is proposing the qualification of exemption from a comprehensive CEQA analysis under the Class 4 category for minor alterations to land. The project involves a low-intensity prescribed underburn less than 10 acres to improve community fire resiliency, reduce risks to first responders during a wildfire, and preserve the ecological integrity of the property when a wildfire ignites. The planned burn will target carrier fuels like needlecast and leaf litter for fuels reduction. The burn is small in size and low in complexity. The burn will be conducted in a manner that does not release large amounts of smoke. The burn plan will identify hazard mitigation tactics and ensure the conservation of ecological and cultural resources. Under the specified prescription, the burn will have low velocity and minimal heat, resulting in the combustion of fine fuels only and not threatening the forest ecosystem. All necessary permits will be obtained by the landowner. The proposed project will not result in the taking of endangered, rare, or threatened plant or animal species or result in significant erosion and sedimentation of surface waters. Containment lines may include water bars if built on steep slopes to prevent sediment deposition or erosion.

Lead Agency

Contact Person: Cordi Craig

Area Code/Telephone/Extension: 530-390-6680

If filed by applicant:

1. Attach certified document of exemption finding.
2. Has a Notice of Exemption been filed by the public agency approving the project? **Yes** **No**

Signature: _____ **Date:** _____ **Title:** _____

Signed by **Lead Agency** Signed by **Applicant**

Authority cited: Sections 21083 and 21110, Public Resources Code.
Reference: Sections 21108, 21152, and 21152.1, Public Resources Code.

Date Received for filing at OPR: _____

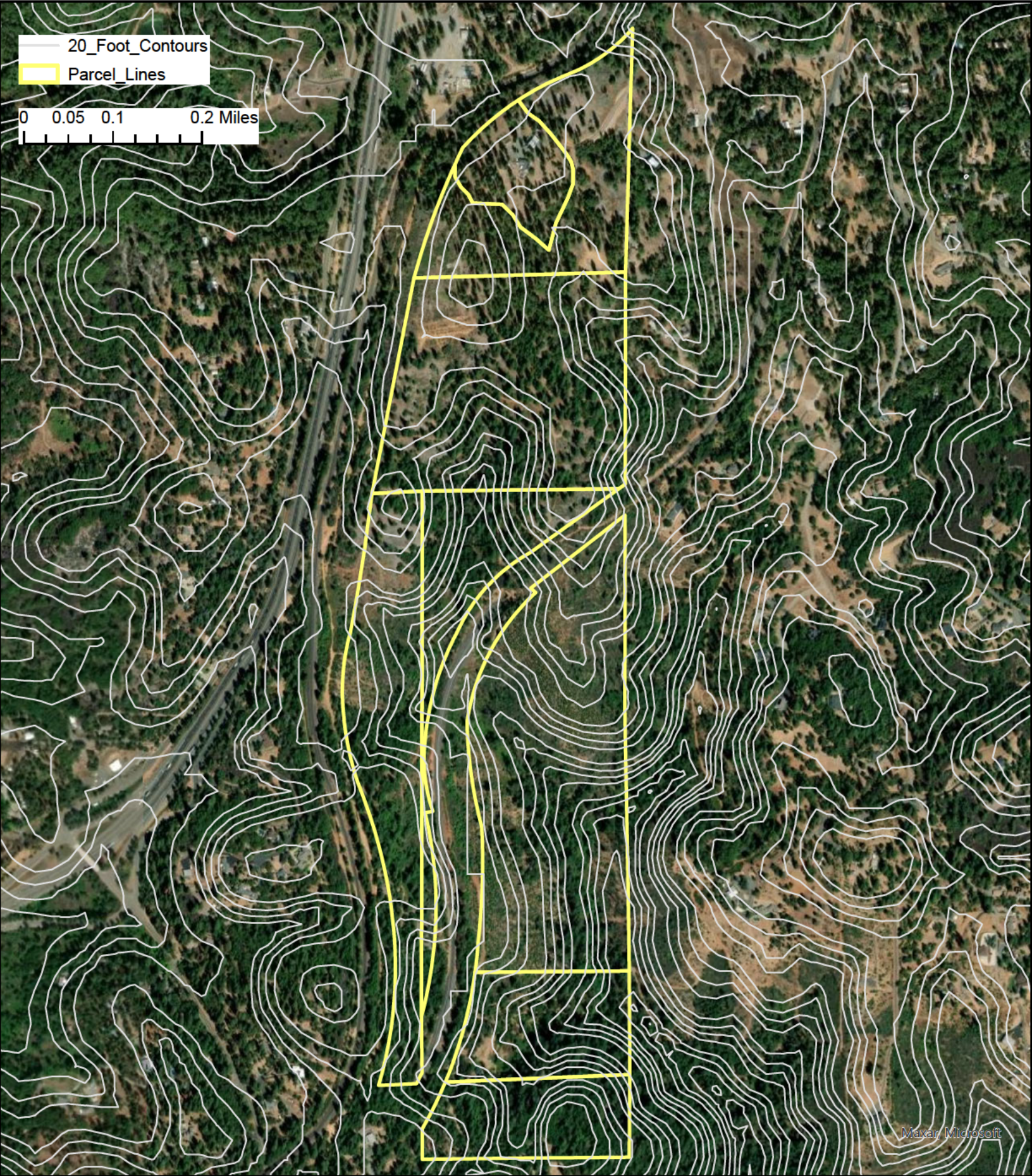


Proposed Rx Burns
Weimar - Highview Lane



20_Foot_Contours
Parcel_Lines

0 0.05 0.1 0.2 Miles



Notice of Exemption**Appendix E**

To: Office of Planning and Research
P.O. Box 3044, Room 113
Sacramento, CA 95812-3044

County Clerk

County of: Placer

From: (Public Agency): Placer County Resource Conservation District
11641 Blocker Dr., Suite 120
Auburn, CA 95603

(Address)

Project Title: Prescribed Burning on Private Lands (PBPL)- Ferreira Lincoln

Project Applicant: Placer County Resource Conservation District

Project Location - Specific:

T13N R07E Section 27, 28, 34 MDBM; Gold Hill USGS 7.5' Quad

Project Location - City: Lincoln

Project Location - County: Placer

Description of Nature, Purpose and Beneficiaries of Project:

PBPL was funded by CAL FIRE to increase the pace and scale of prescribed burning throughout the state to improve fire resilience and forest/community health. Placer RCD is working with Placer County landowners to conduct small scale, low-complexity prescribed burns. The project will serve as an opportunity to equip private landowners with the knowledge and skills to use prescribed burning as a fuels management tool for working landscapes. The proposed project benefits private landowners and the ecological integrity of the community.

Name of Public Agency Approving Project: Placer County Resource Conservation District

Name of Person or Agency Carrying Out Project: Placer County Resource Conservation District

Exempt Status: **(check one):**

- ☐ Ministerial (Sec. 21080(b)(1); 15268);
- ☐ Declared Emergency (Sec. 21080(b)(3); 15269(a));
- ☐ Emergency Project (Sec. 21080(b)(4); 15269(b)(c));
- ☒ Categorical Exemption. State type and section number: CCR Title 14, Section 15304 Minor Alterations to Land
- ☐ Statutory Exemptions. State code number: _____

Reasons why project is exempt:

Placer RCD is proposing the qualification of exemption from a comprehensive CEQA analysis under the Class 4 category for minor alterations to land. The project involves a low-intensity prescribed underburn less than 5 acres to improve community fire resiliency, manage invasive plant pressure on working lands, and promote native plants. The planned burn will target grass fuels, primarily invasive species. The burns will be small in size and low in complexity. They will be conducted in a manner that does not release large amounts of smoke. The burn plan will identify hazard mitigation tactics and ensure the conservation of ecological and cultural resources. Under the specified prescription, the burn will have low velocity and minimal heat, resulting in the combustion of fine fuels only and not threatening the forest ecosystem. The proposed project will not result in the taking of endangered, rare, or threatened plant or animal species or result in significant erosion and sedimentation of surface waters. Containment lines may include water bars if built on steep slopes to prevent sediment deposition or erosion.

Lead Agency

Contact Person: Cordi Craig

Area Code/Telephone/Extension: 530-390-6680

If filed by applicant:

1. Attach certified document of exemption finding.
2. Has a Notice of Exemption been filed by the public agency approving the project? Yes No

Signature: _____ Date: _____ Title: _____

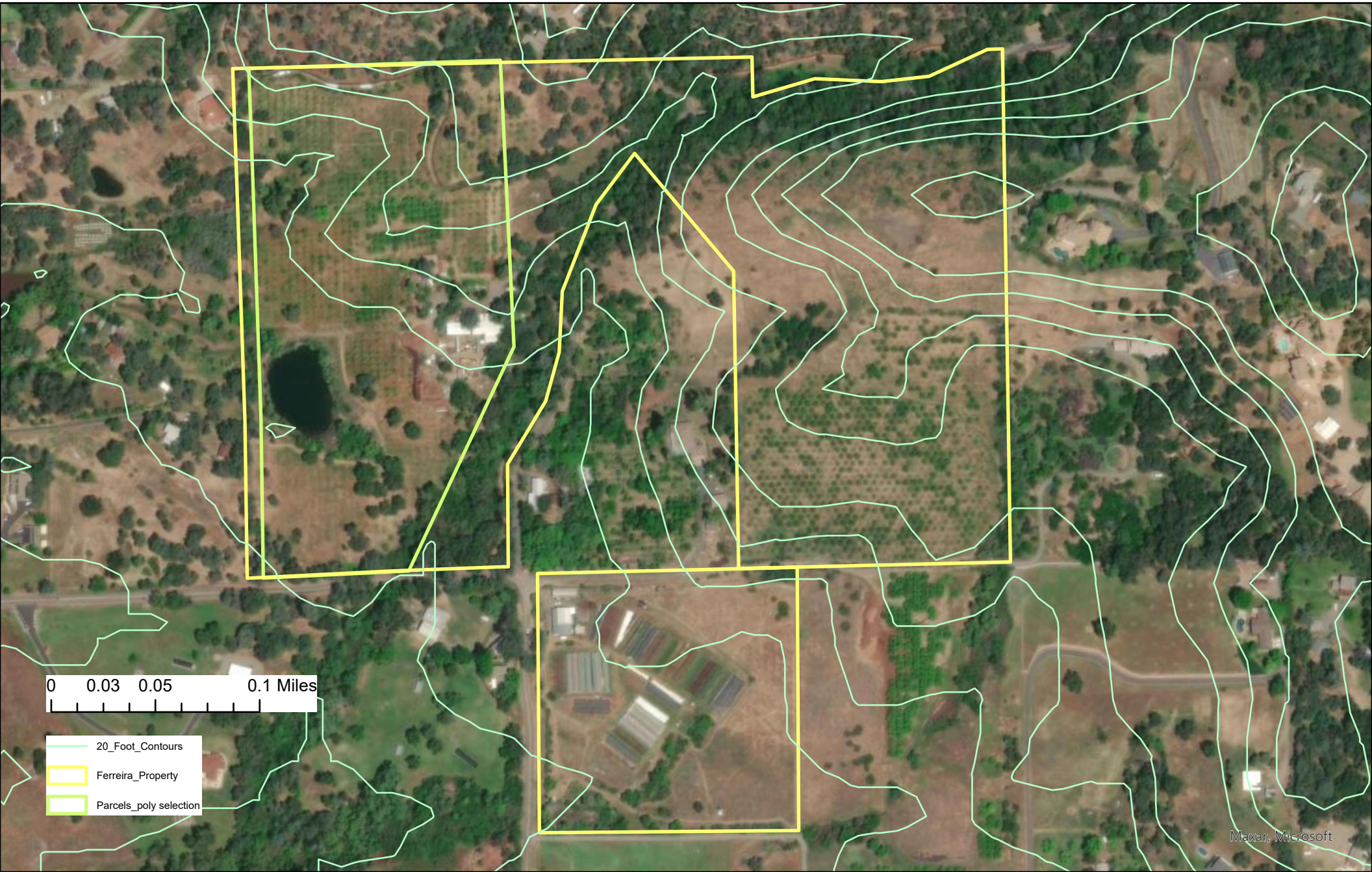
Signed by Lead Agency Signed by Applicant

Authority cited: Sections 21083 and 21110, Public Resources Code.
Reference: Sections 21108, 21152, and 21152.1, Public Resources Code.

Date Received for filing at OPR: _____



Ferreira NOE Map Lincoln, CA



0 0.03 0.05 0.1 Miles

- 20_Foot_Contours
- Ferreira_Property
- Parcels_poly selection



Placer County Local Agency Formation Commission
110 Maple Street Auburn, CA 95603 | (530) 889-4097

Electronic Transmission

July 15, 2025

COMMISSIONERS

Joshua Alpine
Chair
(Special District)

Whitney Eklund
Vice Chair
(City)

Judy Friedman
(Special District)

Cindy Gustafson
(County)

Shanti Landon
(County)

Sean Lomen
(City)

Susan Rohan
(Public)

**ALTERNATE
COMMISSIONERS**

David Bass
(City)

Anthony DeMattei
(County)

Cherri Spriggs
(Public)

Stephanie
Youngblood
(City)

Vacant
(Special District)

COUNSEL

Michael Walker
General Counsel

STAFF

Michelle McIntyre
Executive Officer

Amanda Ross
Acting Assistant
Executive Officer

Amy Engle
Commission Clerk

Subject: Selection of a LAFCO Special District Representative
To: Placer County Special District Presiding Officers
c/o Clerk of the District
From: Amy Engle, LAFCO Commission Clerk

On June 10, 2025, LAFCO initiated the nomination process for the selection of an Alternate Special District Representative, requesting that Special District Presiding Officers submit nominations for a qualified special district board member to fill this open seat. LAFCO received five nominations.

All five candidates are listed on the attached ballot. Each candidate submitted a statement of qualifications which is included in your packet.

- **Voting Instructions:** Please complete the attached ballot, clearly indicating your selection.
- **Authorized Signatures:** To be valid, ballots must be signed by the presiding officer of your special district or by another board member specifically designated by your board to cast the vote.
- **Quorum Requirement:** A quorum of Placer County Special Districts must submit ballots for the election to be considered valid.
- **Election Outcome:** The candidate who receives the highest number of votes will be appointed as the Special District Representative.
- **Supporting Materials:** This email includes the ballot and the statements of qualifications submitted by each candidate for your review.
- **Submission Deadline:** Please return your completed ballot via email to lafoo@placer.ca.gov no later than **Thursday, August 28, 2025, at 4:00 PM.**



Placer County Local Agency Formation Commission
110 Maple Street Auburn, CA 95603 | (530) 889-409

Ballot: Selection of Special District Alternate Representation on LAFCO

Please choose one candidate:

- ☐ **Pete Gallegos**, South Placer Fire Protection District
- ☐ **Richard Hercules**, Foresthill Fire Protection District
- ☐ **Jim Holmes**, Placer Resource Conservation District
- ☐ **Jenny Knisley**, Newcastle, Rocklin, Gold Hill Cemetery District
- ☐ **Scott Wilson**, Tahoe-Truckee Sanitation Agency

Name of Special District: _____

Name of Presiding Officer: _____

Signature of Presiding Officer: _____

Date: _____

Must be received by LAFCO via email at LAFCO@placer.ca.gov no later than August 28 2025 by 4pm

Statement of Qualification for LAFCO Nomination

Pete Gallegos Board of Director for South Placer Fire District

To Whom it may concern.

I am interested in the position on the LAFCO Board and feel that I am qualified for the position because of my vast experience in the fire service and being a lifelong resident of Placer County. I started my fire service career as a seasonal firefighter in 1987 for CAL FIRE. I rose through the ranks and retired as the Staff Chief/Administrator of the Command-and-Control Program statewide. I lead the planning, organization, direction, and control of CAL FIRE's statewide Command and Control programs. These programs encompass Command and Control, Operations Support (OAS), and Hired Equipment (HE). In this capacity, I was entrusted with CAL Fire policy development, budgeting, and serving as a subject matter expert for internal and external issues pertaining to these programs. I was responsible for the 23.5-million-dollar budget.

I was the Agency Administrator in the State Operations Center (SOC) during emergencies and natural disasters. This included wildland fires, mud slides, earthquakes, floods and other emergencies.

Yet another example includes my tenure as Battalion Chief (BC) overseeing two local government Schedule A Contracts, (City of Morgan Hill Fire Department and the South Santa Clara Fire Protection District), I held significant operational responsibility and managing budget administration totaling over \$10 million. Notably, I spearheaded and provided fiscal oversight for the creation of the first two-year budget for the City of Morgan Hill, demonstrating my proficiency in strategic financial planning. Furthermore, I provided clear and concise budget reports to both the fire district board and the city council, utilizing various statistical data for the annual financial report adopted by the city, fire district, and County of Santa Clara. Additionally, I played a pivotal role in designing and purchasing multiple apparatus for the city, ensuring alignment with operational needs and financial constraints. My responsibilities also extended to crafting staff reports that analyzed financial situations accurately and recommended effective courses of action. Through these efforts, I upheld fiscal responsibility while facilitating the efficient utilization of resources to support the operational objectives of both contracts. I was responsible for the staffing levels to meet operational needs.

I was raised and currently live in Granite Bay with my wife where we raised our three children. My wife and I have always been actively engaged in the community volunteering as board members in youth sports as well as coaching youth sports. We volunteer at church in the annual Christmas program feeding the hungry and I am currently on the Board of Directors for the South Placer Fire District.

Thank you for your time,

Pete Gallegos

Statement of Qualifications for Election to Placer LAFCO
Richard Hercules, President, Foresthill Fire Protection District

The Opportunity for Placer County

It is certain that the special districts within Placer County will have new challenges in their opportunities and manner in which they provide unique services to the public. These serviced communities need to be bound together to develop organizational solutions for the County. These may be that is different than what exists, but again, to the benefit of the public. New state laws will also affect those districts, governments, and their purposes.

Placer County has been affected by the increased rate of development in most all areas. Special districts will be affected, but are largely managed by elected volunteers and staff that focus on the operations of that district. It is apparent that there are separations between the larger urban districts and the more remote districts, but some effort is expected to better align these groups for the issues of the County. LAFCO, with staff and support from Placer County officials, the special district volunteers and local city officials, can evaluate impacts of growth and development on these districts and urban communities and effect change. Appropriately, citizens of Placer County have expectations of services at many levels, particularly those funded by property taxes and assessment measures.

My Background

Much of my career in private industry was the development, operation of new businesses and organizations to deliver a service or product to a wide range of users. In almost all cases, my skills in these efforts required knowledge in long term planning, policy development, defined organizational structure, and legislative and financial management. Accordingly, conflict resolution and the need to manage negotiations for those opportunities is part of that environment. Further, my experience in mergers and acquisitions has broadened my perspectives in finding solutions beneficial to those parties involved, however disparate.

I have many strengths to work and balance improvements of these services through separation, consolidations or restructuring. While these activities are within the purview of LAFCO, I would apply the reality of the needs of the County and its citizens. In the last 5 years of my work with the Foresthill Fire Protection District board, I can offer that the district is better managed in this period than some of its previous history, and with better engagement and appreciation by the community it serves. This is the type of energy and commitment I would apply to this appointment. I look forward to discuss and understand the particular issues your district is experiencing. I can be reached through the Fire District web site or by telephone.

STATEMENT OF QUALIFICATIONS

For

JIM HOLMES

(530) 305-7070 * USSHolmes@gmail.com

Jim Holmes brings a wealth of experience and a continuous commitment to public service, with a legacy rooted in the heart of Placer County. A descendant of two Pioneer Placer County families, Jim has spent over three decades serving the community, including 18 years as a Director of the Placer Consolidated Fire Protection District. He also contributed eight years of leadership as President and Trustee of the Auburn Union Elementary School District Board. Notably, Jim served for 20 years as a member of the Placer County Board of Supervisors for District 3, during which time he was also an active participant on the Placer LAFCO Board.

Throughout his career, Jim has demonstrated his dedication to the agricultural community, having been an influential voice in rural and county matters. As a board member of the Rural County Representatives of California, he helped advocate for policies that benefit these areas. He also founded the Placer County Youth Commission, which offers local youth the opportunity to engage with and learn about government processes.

Further extending his service to Placer County, Jim has held positions on the Placer County Air Pollution Control Board and the First 5 Children and Families Commission, focusing on issues ranging from environmental health to early childhood development. He currently serves as a board member for the Placer County Resource Conservation District, continuing his efforts in environmental stewardship. Additionally, Jim played a pivotal role in collaborating with local fire protection districts—Loomis, Penryn, and Newcastle—to successfully secure the revenue needed for sustaining vital fire services across the county.

Jim is asking for your support to continue his strong commitment to Placer County and Special Districts. If you have any questions, please feel free to contact Jim directly. Thank you for your consideration.

Statement of Qualifications Placer County LAFCO

Jenny Knisley
4135 Hunters Drive
Loomis, CA 95650
Phone: 916-719-1132 - Email: Jenny4Loomis@gmail.com

June 24, 2025

Re: Special District Alternate Representative Placer County LAFCO

Dear LAFCO Commissioners:

I am submitting my Statement of Qualifications for the position of Special District Alternate Representative, Placer County LAFCO. My 2 1/2 years as the Alternate City LAFCO commissioner for the Town of Loomis, combined with consistent meeting attendance and participation in CALAFCO Conferences and training, have equipped me to contribute effectively to this board.

As the current Special District Representative for the Newcastle, Rocklin, and Gold Hill Cemetery Board and through my involvement on oversight committees, such as the South Placer Fire Oversight Committee, I bring a wealth of experience in board governance. My background as a former Mayor and Council member for the Town of Loomis, as well as Executive Director of the Loomis Basin Chamber of Commerce, where I collaborated with numerous special districts, positions me as a strong advocate for all our Special Districts.

Since 2022, I have attended nearly all Placer LAFCO meetings, familiarizing myself with LAFCO's strategic plans, work schedule, and budget. My career, balancing entrepreneurship, civic leadership in the Town of Loomis, and 29 years of participation with the Soroptimist International community service organization, demonstrates my commitment to the public. My priorities are centered on the welfare of the Placer County region, its residents, and local businesses.

My past education, certificates, and accomplishments include:

- * 2019: Organized and helped develop a successful Loomis Leadership Development Program
- * 2019: Introduction to Economic Development Certificate (CALED)
- * 2015-2019: Provided leadership, encouraged volunteer efforts, negotiated contracts, and supported the rebuilding of the Loomis Library and Learning Center
- * 2016: Institute for Organized Management, a professional Development Program Certificate
- * 2016: Leadership Rocklin Graduate
- * 2015: Western Association of Chamber Executive Academy Graduate

I am eager to bring my skills and experience to the Placer LAFCO board. With a strong work ethic, attention to detail, and a commitment to the well-being of Placer County, I will represent all special districts to the best of my ability. Thank you for considering my application.

Sincerely,
Jenny Knisley

Scott Wilson
Director, Tahoe-Truckee Sanitation Agency
♦ (530) 412-1559 ♦ Caledoniacircle1957@gmail.com
Jurisdiction Represented: Eastern Placer County
Tahoe-Truckee Sanitation Agency / North Tahoe Public Utility District

Statement of Qualifications: Placer County LAFCO Alternate Seat

I am honored to submit my qualifications for consideration as an alternate member of the Placer County Local Agency Formation Commission (LAFCO).

Currently in my third year on the Board of Directors for the Tahoe-Truckee Sanitation Agency (T-TSA), I represent the North Tahoe Public Utility District (NTPUD), representing residents from the Nevada state line in Crystal Bay to Dollar Hill in Eastern Placer County. T-TSA serves, and is governed by five member districts across three counties of the North Lake Tahoe basin, which are: Tahoe City Public Utility District (TCPUD), North Tahoe Public Utility District (NTPUD), Olympic Valley Public Service District (OVPSD), Truckee Sanitary District (TSD), and Alpine Springs County Water District (ASCWD).

I bring to this role a deep commitment to public service, a collaborative leadership style, and experience working with local agencies and community-based organizations.

My leadership contributions include:

- Service on the T-TSA Finance Committee since 2022, where I've helped guide complex decisions such as necessary increases in service charges and connection fees, to addressing an aging infrastructure.
- Holding the position of Vice President of the Board (2023-2025) and recently honored to be elected as President.
- While facilitating T-TSA's membership, I was instrumental in joining the Climate Transformation Alliance (CTA), a cross-sector partnership focused on addressing climate change in the Tahoe-Truckee region.

Our board recently completed a comprehensive Land Use Study, identifying surplus land. This enables us to collaborate with other local agencies to assess and support their land needs.

Prior to my service with T-TSA, I enjoyed a nearly 40-year career in the distribution industry, holding leadership roles across public corporations, private equity firms, and privately owned enterprises. I bring expertise in strategic planning, finance, budgeting, collaborative leadership, team building, customer and supplier relations, and public outreach to every organization I serve.

With deep roots in the region, a strong business foundation, and demonstrated experience in Special District governance, I would be privileged to contribute to Placer County LAFCO as an alternate member.

Sincerely,
Scott Wilson

CALIFORNIA SPECIAL DISTRICT ASSOCIATION
BOARD ELECTIONS
2025
CANDIDATE STATEMENTS



Candidate Statement for CSDA Board of Directors – Jack Arney SPMUD

As a dedicated public servant and business leader, I am honored to seek a position on the California Special Districts Association (CSDA) Board of Directors. With over two decades of experience building strong relationships with local governments, I bring a unique blend of technical expertise, civic leadership, and a commitment to advancing the mission of special districts in California.

I hold a mechanical engineering degree from Santa Clara University, which provides me with a solid foundation for tackling complex infrastructure and operational challenges. My civic and professional journey includes years of working with municipal and regional leaders to foster collaboration among the business community, ensuring effective service delivery and sustainable growth. As a long-time business owner in Placer County, I have firsthand experience navigating the intersection of local government policies and community needs.

My civic involvement spans decades, highlighted by my active leadership in Rotary International, where I served as District Governor and Club President. These roles have instilled in me a deep sense of service and the ability to build consensus across diverse groups. Additionally, my tenure on the South Placer Municipal Utility District (SPMUD) Board has reinforced my commitment to ensuring that government remains responsive and accountable to its citizens.

If elected to the CSDA Board, I will focus on:

- Work to promote advocacy to protect local revenues and enhance public services.
- Promoting innovation and efficiency in special district operations.
- Expanding training opportunities for board members and staff to ensure continued excellence in governance.

I am passionate about empowering special districts to meet the evolving needs of our communities. Together, we can ensure that California's special districts remain leaders in delivering essential services with transparency, efficiency, and integrity.

I appreciate your consideration. I look forward to the opportunity to serve.

I thank all for their consideration and hopeful vote for my candidacy for CSDA Board. I bring a long history of getting things done. My leadership has led to many great collaborations with other City, County, State & Federal agency creating win wins that may not otherwise have happened. The policies I have been the lead on have worked to create order, consistency and especially long-term fiscal viability.

I think out of the box, keep an open mind, and open ears to develop consensus and solutions that benefit the community and the district. I am not a rubber stamper, and feel I would be a great addition to the Board and would help represent special districts as we move forward in an ever-changing political, environmental and fiscal world.

You got nothing to lose, and a good chance you will gain by putting a checkmark next to my name, you won't regret it!

Again Thanks & as Always.... Keep Smilin'

Scott

Candidate Statement**Rich Lozano**

Candidate for California Special Districts Association (CSDA) Board Member

I am honored to submit my candidacy for the California Special Districts Association (CSDA) Board of Directors. With a strong commitment to public service and extensive experience in local governance, I am eager to contribute my leadership and advocacy to strengthen special districts across California.

I have served two terms as a Board Member for the Cosumnes Community Services District (CSD) from 2010 to 2018 and 2024 to the present, working to enhance parks, recreation, fire services, and community engagement. Additionally, I served six years as a Council Member for the City of Galt (2019-2024), addressing key municipal issues and advocating for local policies at the California State Capitol.

Beyond my work with Cosumnes CSD, I have been an active leader in Cal Cities, serving in policy committees for three years and as a Division Board Member. I have also served on the LAFCO Special District Advisory Committee for two years, the Sacramento Area Council of Governments Board for six years, and the California Council of Governments Board for one year. My seven years in the Galt Sunrise Rotary, where I currently serve as club president, further demonstrate my dedication to community service.

As a CSDA Board Member, I will advocate for policies that support local governance, financial sustainability, and operational excellence. My experience in governance, strategic planning, and advocacy positions me to navigate complex issues and deliver meaningful results.

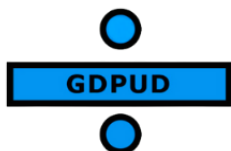
I respectfully ask for your support to serve as your representative on the CSDA Board. Together, we can strengthen the voice of special districts and ensure they continue providing critical services to communities across California. Thank you for your consideration.

Candidate Statement for Steven Palmer

I am running for election to Sierra Network Seat B on the CSDA Board of Directors and respectfully request your agency's vote. I am the General Manager of the Donner Summit Public Utility District at Soda Springs, and live near Auburn. CSDA membership has been very valuable to the special districts where I have worked and extremely valuable to my staff and me in our professional development. I have been very involved in CSDA for about six years, and take advantage of the educational opportunities whenever possible, including attending at least one conference and legislative days each year. I want to join the CSDA Board so I can give back to the association and help CSDA continue to provide high-quality services to its member agencies.

I also want to encourage participation by all CSDA members. Over the past year, I have worked diligently to re-engage special districts in my local area and, with the help of other CSDA members, successfully restarted quarterly meetings of the Gold Country Chapter. These meetings bring together a diverse group of special districts, including fire, water, wastewater, parks, recreation, cemetery, and resource conservation. These connections to a variety of districts will equip me to represent all special districts within the Sierra Network.

As President of the Gold Country Chapter, I strive to ensure that all special districts in our chapter have the opportunity to shape the agendas for our meetings and actively participate. I will bring this same perspective and approach to the CSDA Board.



NICHOLAS SCHNEIDER
GENERAL MANAGER

GEORGETOWN DIVIDE
PUBLIC UTILITY DISTRICT

6425 Main Street
Georgetown, CA 95634

I seek your support for this election, based on my two decades of experience in water management and the insights gained while interfacing with the evolving landscape of resource management. CSDA's work is of vital importance to special districts and those they serve, offering resources while giving a collectively strengthened voice to challenges faced. Working to build a resilient public water system utilizing rural, small district resources, which recently experienced the Mosquito Fire damaging our watershed and infrastructure, has lent valuable perspective in meeting the evolving realities of today and identifying the needs of tomorrow.

As a CSDA Board member, my working goal would be to guide the direction impacting public works legislation, in support of special districts. Currently, I am actively involved in legislative advocacy to elevate and ensure these positive outcomes. The experience has illustrated the challenges impacting the common interests of California's special districts. Committee work and collaboration have been top priorities. I currently serve on several statewide legislative and regulatory task forces. These include the CSDAs Membership Service and Fiscal Committees, the Association of California Water Agencies' (ACWA's) State Legislative Committee, the Federal Affairs Committee and the Agricultural Committee, the CMUA Legislative Committee, as well as the State Department of Water Resources' Conservation Legislation working group. Former appointments include the SB 200 SAFER Water Fund Advisory Board by the California State Water Resource Control Board and the CSDA Legislative Committee.

It would be an honor to serve on the CSDA Board of Directors, bringing my knowledge and experience to inform valuable recommendations tailored to the current needs. Serving communities and maintaining a viable, resilient public water supply has been at the center of my efforts, and the Board offers an opportunity to extend that mission to a statewide level. Thank you in advance for your consideration.

Mark J. Wasley, CSDA Board Member Candidate Statement, Sierra Network Seat B, 2026-2028

I request your support in my election to the Board of Directors of California Special Districts Association (CSDA). As a current board member of Truckee Donner Recreation and Parks District as well as the Finance and Administrative Services Manager at Truckee Sanitary District, I have gained valuable experience in governance, budgeting, and community engagement, which I believe enable me to contribute successfully to CSDA's mission.

I am staunch believer that special districts provide superior and most efficient services to our communities. I gained much of my appreciation for special districts during my 25+ year career in the financing and development of master-planned communities in Folsom, Eldorado Hills and Truckee/North Tahoe. Working directly with special district from 'the other side of the counter' gives me a unique perspective and awareness of the direct contributions Special Districts provide.

Throughout my time with the Truckee Donner Recreation and Parks District, I have worked closely with staff and fellow board members to improve financial strength, enhance community services, and ensure community service responsibility. My position at Truckee Sanitary District provides me with the opportunity to serve our board, our employees and our Truckee community on a daily basis. My experiences have deepened my understanding of the unique challenges facing special districts, from financial sustainability to public trust, and have reinforced my commitment to advocating for policies that support these vital entities.

I believe that CSDA has an outstanding team of staff, current board members, and advocates. CSDA's dedication to providing resources and advocacy for special districts aligns with my own values. I am excited about the opportunity to contribute to CSDA's efforts in strengthening the role of special districts in California and nationally. I am committed to supporting policies that promote transparency, innovation, and long-term sustainability for special districts

Thank you for considering my candidacy and I ask for your vote. Please feel free to contact me at mwasley@tdrpd.org.

Cordially,
Mark J. Wasley
Board Member, Truckee Donner Recreation and Parks District



California Association of Resource Conservation Districts
1017 L Street, #556, Sacramento, CA 95814-3805
(916) 432-5938 www.carcd.org

CARCD Membership Dues Fiscal Year 2025-2026

ORGANIZATION NAME: Placer County RCD

Membership Dues are calculated based on 2% of budgeted Administrative and Operations Expenses*

☐ Full Membership Dues – FY 2024-25 Amount Paid \$ Available for RCDs that paid full dues in FY 2024-25 and choose to pay the same amount for FY 2025-26 (NO NEED TO PROVIDE ADOPTED BUDGET OR OTHER DOCUMENTATION)

☒ Full Membership Dues – Maximum \$7,500.00 When RCD Administrative and Operations Expenses* are \$375,000 or more

➔ Unless paying the same amount as owed last year, to be considered a Full Member at the Custom or Minimum dues levels, documentation must be submitted in the form of the current year adopted budget (FY 2025-26 or 2025 if using a calendar year budget) clearly showing the portion of budgeted expenses for Administrative and Operations*. If the RCD budget does not specifically note administrative and operations expenses*, an explanation of the administrative and operations * is required to be attached with the budget.

➔ Adopted budget required to be submitted (unless paying the same amount owed last year).

<input type="checkbox"/> Full Membership Dues – Custom	\$	When RCD Administrative and Operations Expenses* are \$7,501 - \$374,999 2% x \$ (Administrative and Operations Expenses*)
<input type="checkbox"/> Full Membership Dues – Minimum	\$150.00	When RCD Administrative and Operations Expenses* are \$7,500 or less
<input type="checkbox"/> Trial Non-voting Membership	\$0.00	Only available for RCDs that were not members at any level during all of the following years - FY 2022-23, 2023-24 and 2024-25

ADDITIONAL SUPPORT FOR ADVOCACY

Support for legislative advocacy on a statewide level \$0.00

TOTAL \$7,500.00

* Administrative and Operations Expenses: Total expenses less all expenses used for direct implementation of conservation programs or projects. Expenses subject to the 2% includes all staff salaries/benefits that are not direct-billed to grants or are funded from overhead/indirect funds, office rent and utilities, website expenses, insurance, contracts for administrative functions such as audit, bookkeeping, legal, etc. Expenses that are funded from overhead or administrative percentages from grants are to be considered administrative and operations.

REQUIRED

Specify email address to receive official notices from CARCD: sarah@placerrcd.org

Upon receipt and acceptance of this completed form and supporting budget (if applicable), CARCD will provide an invoice by email to the organization named above. RCDs will be dropped from the membership list if payment is not received by August 31, 2025.

Email to send invoice to: sarah@placerrcd.org

PROPOSED CHANGE HIGHLIGHTED (pg. 54 of the 2025 Employee Handbook)

Holidays

We observe the following paid holidays per calendar year for full-time employees. Holidays must be observed in 8 or 10 hour (full days) and are not eligible for hourly flex time. Part-time employees are also eligible for the following paid holidays on a prorated basis and must be regularly scheduled to work on that day.

**New Year's Day
Martin Luther King Jr. Day
President's Day
Memorial Day
Independence Day
Labor Day
Columbus Day
Veterans Day
Thanksgiving Day
Christmas Day
2 Floating Holidays**

When a holiday falls on a Saturday or Sunday, it is usually observed on the preceding Friday or the following Monday. Holiday observance will be announced in advance. If you are on a paid absence due to vacation when a holiday occurs, you will receive holiday pay. If an employee must work or choose to work a full day on a holiday due to workload and scheduling restraints, with supervisor approval they can opt to utilize a day of holiday pay during the same workweek in lieu of taking holiday pay for the officially observed holiday.

If an employee's hire date is between January 1 and June 30 they will receive two floating holidays for the calendar year. If the hire date is between July 1 and December 31 they will receive one floating holiday for the calendar year. However, floating holidays cannot be taken until 90 days after the hire date. If employment is terminated between January 1 and June 30 the employee is eligible to be paid out one floating holiday if not already utilized. If employment is terminated between July 1 and December 31 they will be paid out for two floating holidays if not already utilized.

Insurance Benefits

Medical, Dental and Vision Insurance: The District offers comprehensive medical and dental and vision insurance plans for eligible employees and their dependents. You may be required to provide adequate proof of the dependent relationship in order to add the dependents to insurance policies. Typically proof of the relationship may be established through a copy of a birth certificate, adoption documents, marriage license, or certificate of registered domestic partnership. We cannot guarantee your domestic partner relationship will be kept confidential. Active full-time employees are eligible for medical, dental and vision insurance on the first of the month following the date of hire. Information describing your benefits will be given to you when you join the program.

The District will contribute a maximum of \$1200.00 per month towards the cost of medical health insurance premiums for the employee/dependents. The District provides 100% of the employee/dependents dental and vision insurance benefits. You will be responsible for any excess premiums due for the medical coverage you choose. The portion of the monthly insurance not covered by the District or "out-of-pocket" expense will be deducted from the employee's paycheck. The total annual out-of-pocket premium will be divided by the number