

75
YEARS
1947-2022



**PLACER
RESOURCE
CONSERVATION
DISTRICT**

Helping people help the land for 75 years

**ANNUAL REPORT
2022**

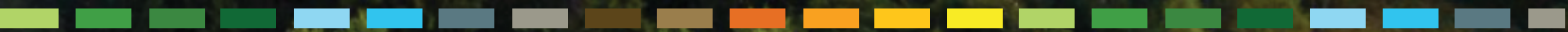
TABLE OF CONTENTS

3. **Who We Are**
4. **Our Team**
5. **The District at a Glance**
6. **Program Areas**
7. **Healthy Soils Program**
8. **Landowner Technical Assistance**
9. **Accessible Garden Bed**
10. **Community Garden Review**
11. **Auburn Shaded Fuel Break**
12. **California Forestry and Natural Resources Career Mentorship Program**
13. **Chipper Program**
14. **Placer County Coordinated Fuel Break**
15. **Placer County Emergency Fuels Reduction**
16. **Prescribed Burning on Private Lands**
17. **Placer RCD Fuel Reduction Projects**
19. **Financial Summary**
20. **Grant Funders & Partners**
22. **Looking Forward**





75
YEARS



WHO WE ARE



For the last 75 years, Placer County Resource Conservation District (Placer RCD) has provided technical assistance to private landowners, collaborated with state and local agencies, and implemented projects that promote sustainable land management.



OUR MISSION

Advance the sustainable management of natural resources in Placer County among private landowners, local organizations, and public agencies through action, education, and outreach.

OUR VISION

Create a legacy of conservation in Placer County by engaging with the community to support and inspire environmental stewardship.





PLACER RESOURCE CONSERVATION DISTRICT

It is truly remarkable to reflect on the immense transformations that have taken place in Placer County over the past 75 years since our inception. The foresight and commitment of the farmers and ranchers who organized the Placer Resource Conservation District laid the foundation for our organization. Little did they anticipate the significant changes our landscape, natural resources, demographics, and environmental challenges would undergo in the following decades. However, their visionary spirit has propelled us forward, enabling us to adapt, remain resilient, and steadfastly serve the needs of both the land and the vibrant community it supports.

- **Claudia Smith, Board Chair**



Claudia Smith
Board Chair



Patricia Beard
Board Director



Cathy Johnson
Board Director



Stephen Jones
Board Director



Jonathan Jue
Board Director



Kristin Lantz
Board Treasurer



Thomas Wehri
Board Director

Sarah Jones
Executive Director

Allison Erny
Forestry Project Manager

Andrew Justus-Fritz
Ag & Community Programs Manager

Anthony Corral
Chipper Program Crewmember

Brandi Hankins
Chipper Program Crew Lead

Brian Pimentel
Agriculture Program Coordinator

Chad Cheney
Chipper Program Crew Lead

Cordi Craig
Prescribed Fire Program Manager

Donna Thomassen
Administration and Finance Manager

Jason Graydon
Chipper Program Crew Supervisor

Jerry Reioux
Forestry Conservation Planner

Kate Espinola
Executive Assistant

Lewis Campbell
Forestry Project Coordinator

Liana Vitousek
Community Engagement & Outreach

Liliana Santellano
Chipper Program Crew Lead

Mark White
Conservation Planner

THE DISTRICT AT A GLANCE

864,143

acres
serviced

89,862

acres
of developed
landscape

175,243

acres of
agriculture

Data from 2019

455,104

acres of
public and
private timber

404,739

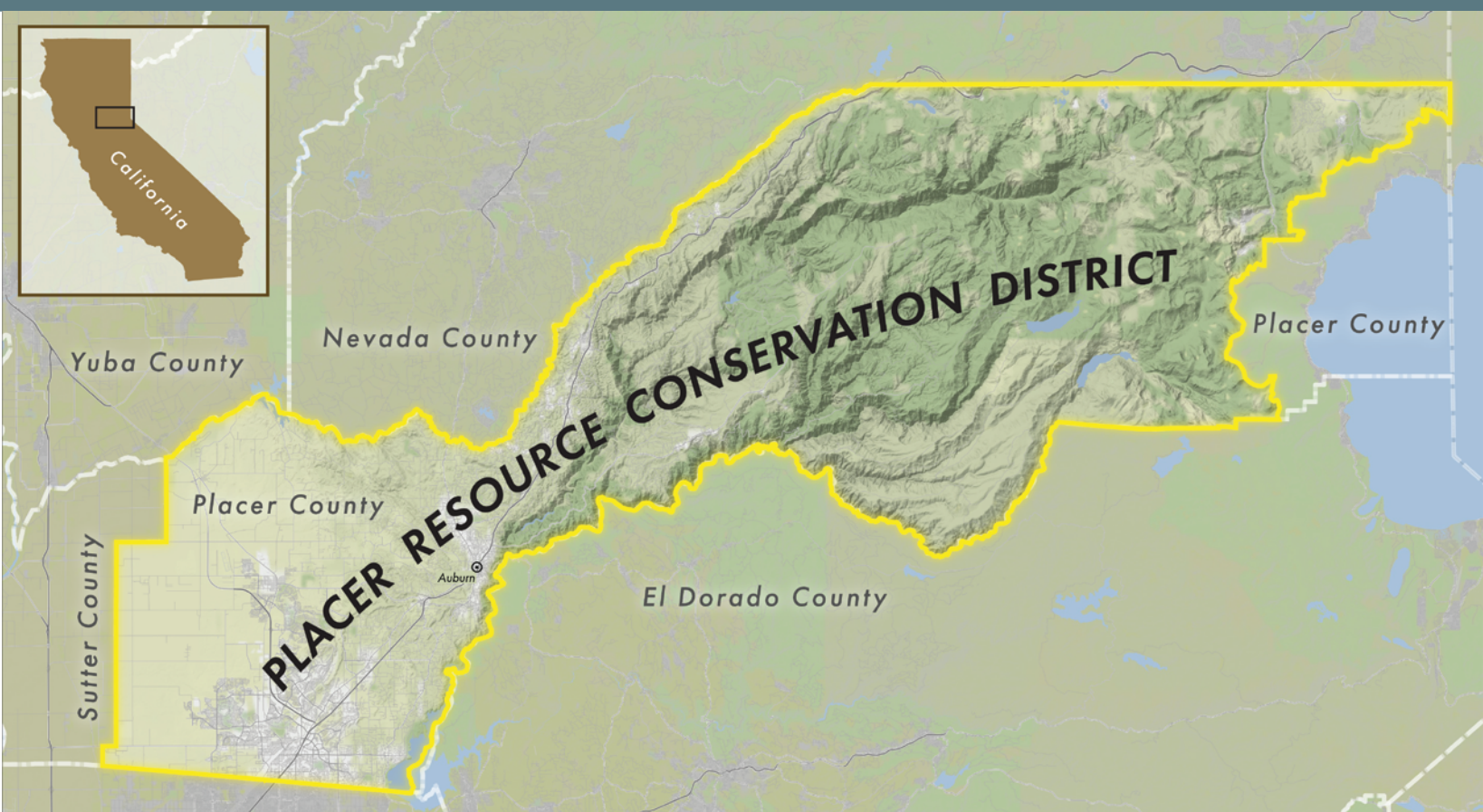
people in
Placer County

High Point

9,149 ft

Low Point

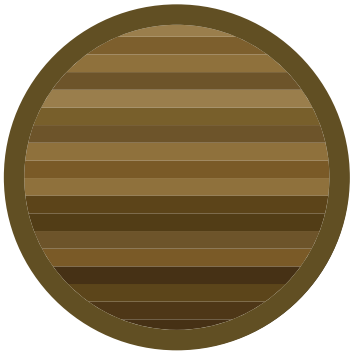
504 ft



PROGRAM AREAS

Placer County boasts a wide range of natural resources, from working rangelands to oak woodlands and alpine forests. Our programs reflect the diversity of needs in our community, from wildfire resilience to pollinator preservation. We prioritize making positive impacts within the county, bolstered by the best available science. The eight following programs all fit within one or more of the program areas below.





HEALTHY SOILS PROGRAM

Placer RCD collaborated with farmers and ranchers in Placer County to enhance the soil quality of their agricultural lands. Together, they applied for grants from CDFA Healthy Soil Program and received assistance from Placer RCD for project implementation and grant administration. This initiative aided in the adoption of practices that improve soil health and promote the sequestration of carbon.



15

applications
submitted

12

grants
awarded

\$925,000

in HSP grants awarded to farmers and ranchers both in and outside of Placer County.

OUR PARTNER





LANDOWNER TECHNICAL ASSISTANCE

Landowner Technical Assistance is offered through a cooperative agreement between Placer RCD and the Natural Resource Conservation Service. The objectives are to enhance soil health, water quality, climate resiliency, forest health, productivity, and other aspects on private lands. This is achieved by providing direct and in-person technical assistance and conservation planning to land managers.



65

landowners
or land
stewards
assisted

44

site visits
conducted

22

conservation
plans created

Data from
Sept.
2021 to
Sept.
2022

OUR PARTNER

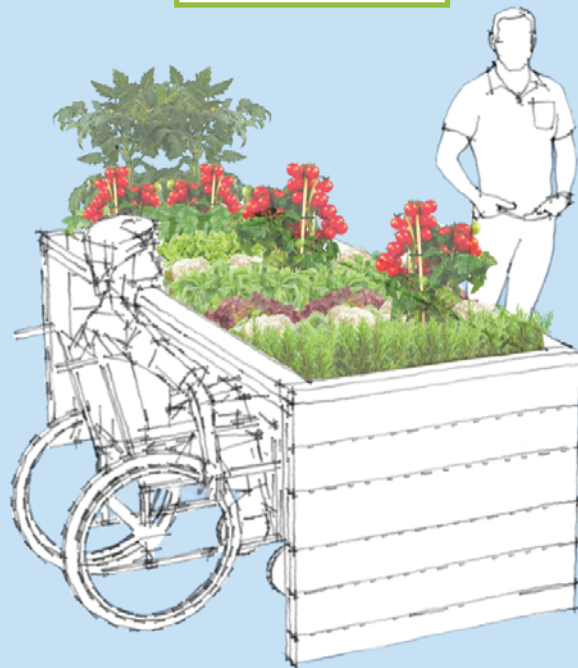




ACCESSIBLE GARDEN BED

Raised garden beds are a common element of the traditional garden, but they can be difficult to use, especially for people with disabilities and some seniors. Fortunately, the Placer RCD and Hamilton County SWCD have designed a longer-lasting and more accessible bed with the help of an Urban Ag and Community Initiative Grant from NACD and NRCS. This bed is suitable for people who use wheelchairs or prefer to stand instead of kneeling.

✓ COMPLETED 2022



980

unique
visitors to info
page on
website.



Learn more about how to build an Accessible Garden Bed by watching Placer RCD's Accessible Raised Bed Overview and Construction Guide on YouTube.

OUR PARTNERS





COMMUNITY GARDEN REVIEW

Community gardens are a driving force for health in the communities and landscapes they serve. The Placer County Community Garden Review served the purpose of listening to garden leaders to understand better the unique ways they serve their community, better understand their needs and share our findings with the broader community.



15

community
gardens
visited

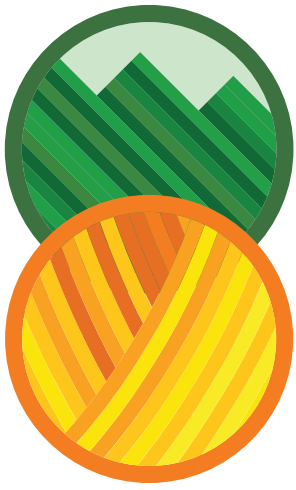
Thank you to our participating Community Gardens:

7th Day Adventist Community Garden, Armed Forces Pavilion and Community Garden, Foresthill Heritage Community Garden, Harmony Garden at Harmony House, Holy Ground Community Garden, Lincoln Community Gardens, Loomis FUMC Faith Garden, Maidu Village Senior Apartment, Outfielder's Community Garden, Senior Garden, Rock Creek Mobile Home Park Community Garden, Rolling Oaks Community Garden, Sacred Ground Community Garden at Sierra Christian Church, Saint James Community Garden, and Valley Oaks Senior Apartments Community Garden.

OUR PARTNER



National Association of
Conservation Districts



AUBURN SHADED FUEL BREAK

The Placer RCD treated approximately 300 acres of the Auburn Shaded Fuel Break just east of the City of Auburn, California. The combination of handwork, chipping, and pile burning removed understory and ladder fuels to prevent the transition of wildfire to an aggressive canopy fire. This project enhances protection for the Auburn State Recreation Area, the City of Auburn and over 2,000 homes by reducing wildfire severity and intensity.



291

acres
treated

The majority of the project area is located on Federal Bureau of Reclamation land within the Auburn State Recreation Area, though around 34 acres are located on private property.

OUR PARTNERS



BUREAU OF RECLAMATION



CALIFORNIA FORESTRY AND NATURAL RESOURCES CAREER MENTORSHIP PROGRAM

This program pairs university and college students with natural resource mentors with the goal of recruiting and retaining a diverse group of early career professionals. Students are given the opportunity to attend workshops, career panels, conferences, events, and conduct field visits with their mentor.



7

participating schools

55

participating students

47

participating mentors (forestry and natural resources)

2

career panels offered in 2022

2

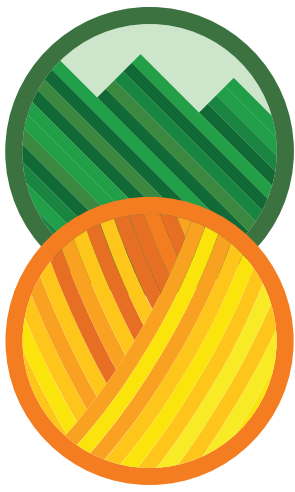
DEIJ workshop opportunities

OUR PARTNERS



California Women in Timber





CHIPPER PROGRAM

In operation for over a decade, one of Placer RCD's most enduring successes is the Placer County Chipper Program. Through incentivizing landowners to manage vegetation on their properties, this program increases safety and benefits the environment. Furthermore, the Chipper Program offers a pathway for community service by partnering with the Placer County Probation Department's Alternative Sentencing Program.



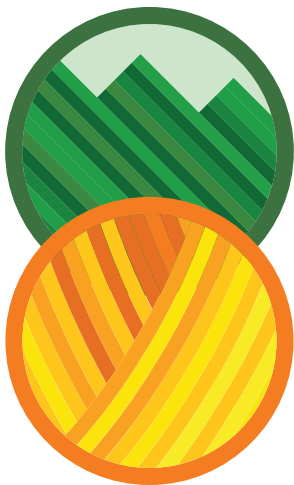
1,100
chipper
services
completed

5,369
tons of
material
processed

Placer RCD launched an online request system which allows residents to request chipper service online, receive email notification updates, and pay online, all to an overwhelmingly positive response.



PLACER COUNTY COORDINATED FUEL BREAK



Placer RCD reduced fuels on 341 acres along the North Fork American River Canyon in Applegate, CA. The Placer County Coordinated Fuel Break (aka Applegate Shaded Fuel Break) improves fire safety for the communities of Applegate, Heather Glen, Weimar, Clipper Gap, and neighboring federal lands.



Before

After

California Climate Investments Grant

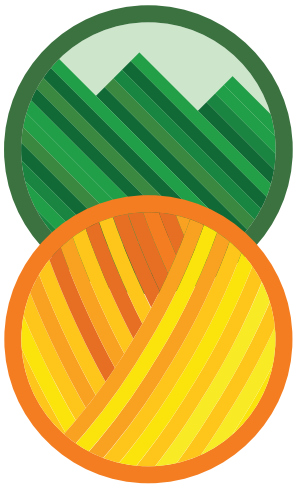


Wildfire and Forest Resilience Block Grant



OUR PARTNERS





PLACER COUNTY EMERGENCY FUELS REDUCTION - STORM IMPACTS

In May 2022, Placer RCD received direct funding from CAL FIRE to reduce roadside fuels in response to damaging winter storms. RCD partnered with Placer County to treat storm damage and understory fuels along roadways that serve as key routes for emergency personnel and civilians during wildfire incidents.



Before

✓ COMPLETED 2022



After

41.2

miles of
roadside fuel
reduction

22

county
roads

171

treated
acres

12

cooperating
private
landowners

75

feet from the
roadway of
fuel
reduction

OUR PARTNERS





PRESCRIBED BURNING ON PRIVATE LANDS

In 2020 the Placer RCD and CAL FIRE launched the Prescribed Burning on Private Lands (PBPL) Pilot Program, which trains community members to gain the capacity, skills, and knowledge to return ecologically beneficial fire to the landscape. Landowners in Placer County can join the Placer Prescribed Burn Association, which is dedicated to building wildfire resiliency in our communities and forests with the support from Tribes, land stewards, and federal, state, and local agencies.



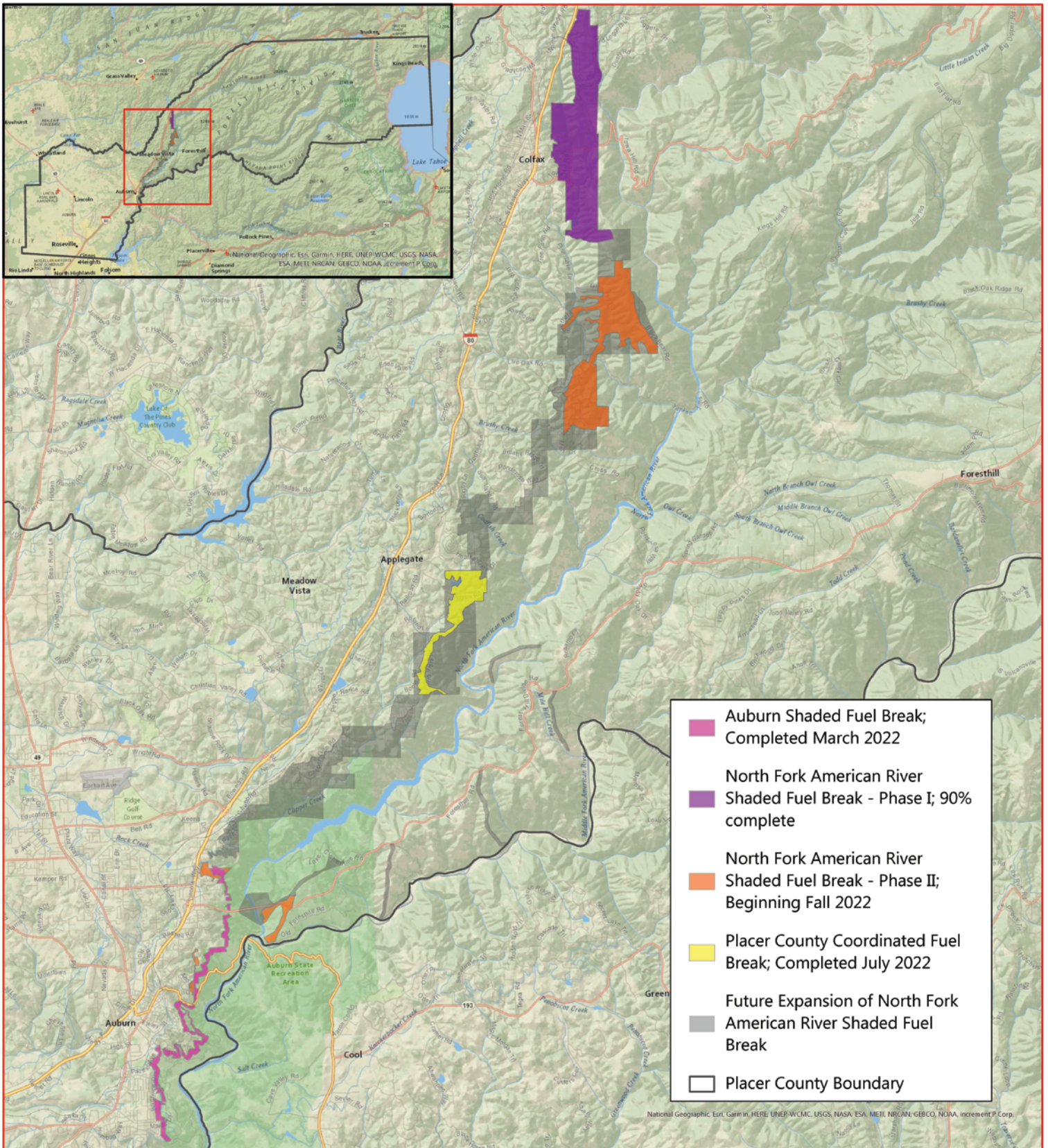
<p>8.25 acres in training and demonstration burns</p>	<p>5 Rx Fire 101 Workshops hosted</p>	<p>87 community members trained on safe use of Rx fire</p>	<p>60 cumulative acres safely burned by landowners</p>	<p>0 escapes, injuries, \$ damages</p>
--	--	---	---	---

OUR PARTNERS



PLACER RCD FUEL REDUCTION PROJECTS



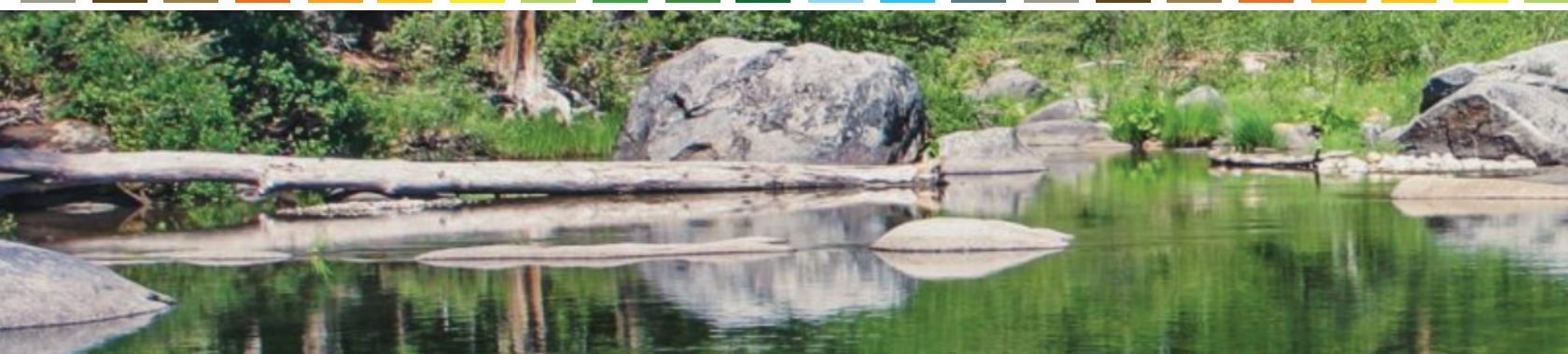


0 1 2 4 6 8 Miles

Funding for this project provided by the California Department of Forestry and Fire Protection's Fire Prevention Program



FINANCIAL SUMMARY



\$3,409,663
Total Revenue

\$3,113,544
Total Expenses

\$2,832,659
Grants & Contracts

\$2,474,563
Grant Expenditures

\$9,396
Chipper Rental

\$10,377
Miscellaneous

\$95,999
Landowner Contributions

\$459,851
Property Tax

\$1,381
Interest Income

\$638,981
Operating Costs

GRANT FUNDERS & PARTNERS





Learn more



about Placer RCD's
programs

LOOKING FORWARD

At the heart of our mission lies a fundamental principle: helping people help the land. This principle remains unwavering, driving us to continuously evolve our programs, projects, and assistance to meet the distinctive needs of the communities we serve. As we embrace the future, we stand committed to supporting and equipping residents and landowners in conservation, fostering a harmonious relationship between people and the land, and ensuring a legacy of vitality for future generations.

**ENSURING A LEGACY OF VITALITY
FOR FUTURE GENERATIONS.**

HELPING PEOPLE HELP THE LAND FOR 75 YEARS

