

Red Sesbania Removal and Riparian Health Program

Placer Resource Conservation District

Cordi Craig, Conservation Project Coordinator



Why do we care?

the impacts of red sesbania



Ecology

- Decreases biodiversity
- Increases risk of erosion
- HIGH priority on CAL IPC
- Decreases water quality and quantity
- Less viable fish habitat



Recreation

- Chokes out creeks and streams, removing aesthetics from bike paths
- May inspire fewer visitors



Aesthetics

- No more creekside view
- If left unchecked, small creeks may run dry



Economics

- Less recreation traffic
- Decrease water quantity to downstream producers (less \$\$ to farmers)



Placer RCD and Red Sesbania Removal

- Red Sesbania removal has been a priority since 2006
 - Partnered with SAFCA
 - Hire contractors for removal annually in Dry Creek Watershed
- It keeps growing back!
- National Fish and Wildlife Foundation (NFWF) Five Star & Urban Waters Restoration Grant

Sustainability?

- Motivated community members create real change
- Controlled management requires education, volunteerism, and local passion



NFWF Proposal & Partners

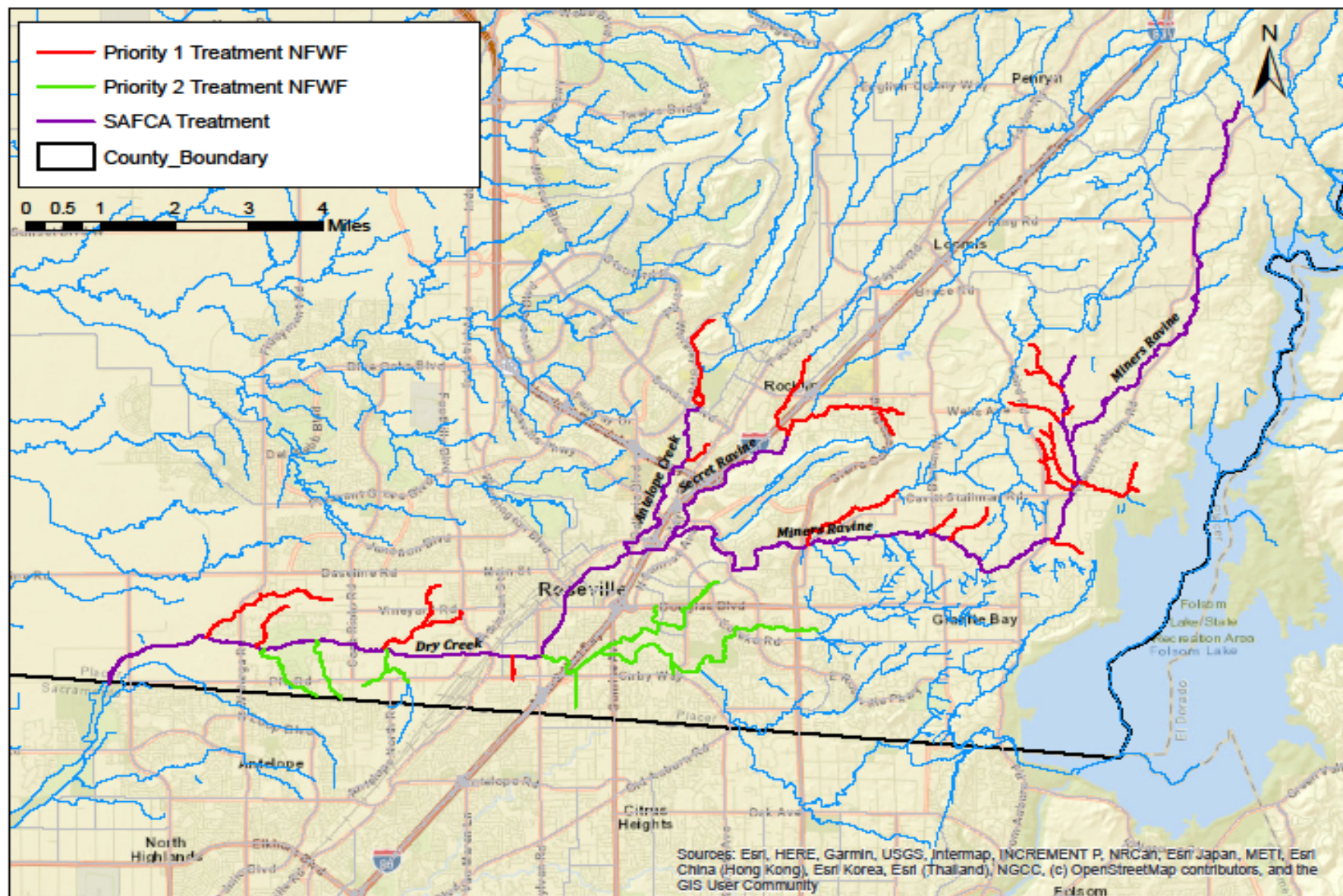
1. Establish a stakeholder group to strategically address the management of red sesbania and other invasive species in the region
2. Host a series of volunteer events for the removal of red sesbania
3. Host environmental education events to teach both adults and children about the negative effects of this species and how to remove it.

Partners:

- Placer Nature Center
- Friends of Dry Creek Parkway
- Valley Foothill Watershed Collaborative
- Placer County
- SAFCA
- Rusmore Consulting
- USFWS



Red Sesbania Removal and Riparian Health Project



Created 12.31.20 C.Craig, Placer RCD

What Next?

- 3 years of funding from SAFCA
 - Rusmore Consulting was hired for this summer
 - NFWF funding disseminated in August (proposed program would go into effect in summer 2022)
-



QUESTIONS?

Cordi Craig

Conservation Project Coordinator

cordi@placerrcd.org

